



Western Michigan University
ScholarWorks at WMU

Legacy Scout Tickets from Pure Oil Company

8-20-2021

MGRRE_PureOilScoutTickets_PARKER, J. E._1_21037028530000

MGRRE

Western Michigan University

Follow this and additional works at: <https://scholarworks.wmich.edu/pure>



Part of the Geology Commons

WMU ScholarWorks Citation

MGRRE, "MGRRE_PureOilScoutTickets_PARKER, J. E._1_21037028530000" (2021). *Legacy Scout Tickets from Pure Oil Company*. 992.

<https://scholarworks.wmich.edu/pure/992>

This Document is brought to you for free and open access via ScholarWorks at WMU. It has been accepted for inclusion in Legacy Scout Tickets from Pure Oil Company by an authorized administrator of ScholarWorks at WMU. See the National Digital Catalogue - Science Base Catalogue for more collections submitted by MGRRE.



MGRRE_PureOilScoutTickets_PARKER, J. E._1_21037028530000

API 21037028530000

Permit Number 2853

Lease Name PARKER, J. E.

Well Number 1

County Clinton

Township 7N

Range 1W

Section 32

2021 DEQ or Pure co_name REX OIL AND GAS CO

Pure Number 8

Latitude 42.95648

Longitude -84.45313

The Pure Oil Company
COMPLETION RECORD THE PURE OIL COMPANY BY OTHER OPERATORS

DATE 10/24/35

LOCATION REPORT

No. 8

STATE Michigan COUNTY Clinton DIST. Ovid TWP. Ovid SEC. 32 TOWN. 7 N RANGE. 1 W

WELL No. 1 (SERIAL No. 8) FARM J. E. Parker ACRES

NAME OF STREAM OR WATERS QUADRANGLE NW-NW-NE

OPERATOR Rex Oil & Gas Co. Map Ovid-Clinton

330 330 Feet from North Line of Farm

" " East " " "

" " South " " "

330 330 " " West " " "

330 330 Feet from North Line of Section

" " East " " "

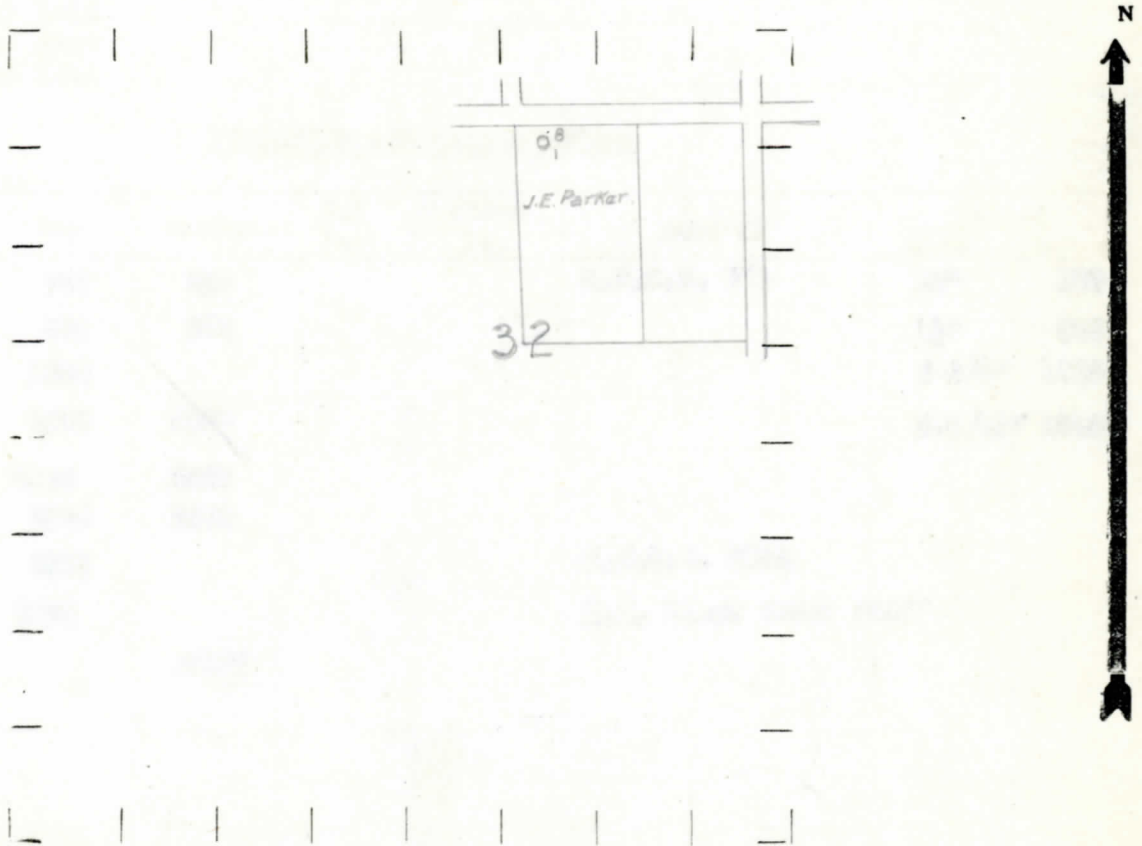
" " South " " "

330 330 " " West " " $\frac{1}{4}$ "

LEGEND

- LOCATION
- ⊕ RIG
- ⊕ DRILLING
- ☀ GAS WELL
- OIL WELL
- ⬮ SMALL OIL WELL
- ⊙ DRY HOLE
- ◆ DRY SHOWING OIL
- ☀ DRY SHOWING GAS
- ⊙ ABANDONED LOCATION
- ☀ ABANDONED GAS WELL
- ⬮ ABANDONED OIL WELL

NOTE: Below make tracing from map, (when no map is obtainable make sketch) showing farm, center of section, this location with measurements and also wells, dry holes, or other locations in the vicinity of this location.



REMARKS:

SIGNED

R. L. [Signature]
Superintendent or Foreman.

Mich. Producing Division

Date **1-2-36** No. **8**
 State **Mich.** County **Clinton** Dist. **Ovid**
 (Serial No.) Twp. **Ovid** Sec. **32** Twp. **7 N** Rge. **1 W**
 Well No. **1** (County No.) **8** Farm **J. E. Parker** Acres
 Operator **Rex Oil & Gas Co.** Information secured ~~by~~ **Scouting Dept.**
 Date well started **10-22-35** Date well completed **12-20-35** Elevation **817**

PRODUCTION RECORD

1st 24 hours natural **Dry Hole**
 2nd 24 hours natural
 Date of shot No. of quarts From to From to
 Date of acid No. of gallons
 1st 24 hours after acid shot
 2nd 24 hours after acid shot

FORMATION AND CASING RECORD

Formation	Top	Bottom	Top Pay	Bottom Pay	Remarks	Casing	
						Size	Set at
Marshall	766	850			H.F.S.W. 771	10"	190
Red Rock	850	955				8 1/2"	546
Red Rock	1380					6-5/8"	1026
Sunbury	2003	2020				5-3/16"	2710
Berea	2020	2060					
Antrim	2100	2365					
Traverse	2365				H.F.S.W. 2505		
Dundee	2790				H.F. Black Water 2808'		
Total Depth		2817'					

Remarks

Signed *J. H. Bell*