



Western Michigan University  
ScholarWorks at WMU

---

Legacy Scout Tickets from Pure Oil Company

---

8-20-2021

**MGRRE\_PureOilScoutTickets\_BROSS, HIRAM  
W.\_1\_21037030450000**

MGRRE  
*Western Michigan University*

Follow this and additional works at: <https://scholarworks.wmich.edu/pure>



Part of the Geology Commons

---

#### **WMU ScholarWorks Citation**

MGRRE, "MGRRE\_PureOilScoutTickets\_BROSS, HIRAM W.\_1\_21037030450000" (2021). *Legacy Scout Tickets from Pure Oil Company*. 993.  
<https://scholarworks.wmich.edu/pure/993>

This Document is brought to you for free and open access via ScholarWorks at WMU. It has been accepted for inclusion in Legacy Scout Tickets from Pure Oil Company by an authorized administrator of ScholarWorks at WMU. See the National Digital Catalogue - Science Base Catalogue for more collections submitted by MGRRE.



---

**MGRRE\_PureOilScoutTickets\_BROSS, HIRAM W.\_1\_21037030450000**

API 21037030450000

Permit Number 3045

Lease Name BROSS, HIRAM W.

Well Number 1

County Clinton

Township 8N

Range 2W

Section 29

2021 DEQ or Pure co\_name STORK OIL CO

Pure Number 9

Latitude 43.05553

Longitude -84.57001

COMPLETION RECORD OF THE PURE OIL COMPANY OTHER OPERATORS

DATE January 23, 1936

LOCATION REPORT

No. 9

STATE Michigan COUNTY Clinton DIST. Greenbush TWP. Greenbush SEC. 29 TOWN 8 N RANGE 2 W

WELL No. 11 (SERIAL No. 99) FARM \_\_\_\_\_ ACRES \_\_\_\_\_  
PREC. Hiram W. Bross

NAME OF STREAM OR WATERS \_\_\_\_\_ QUADRANGLE NE-SW-NE  
NE SW NE

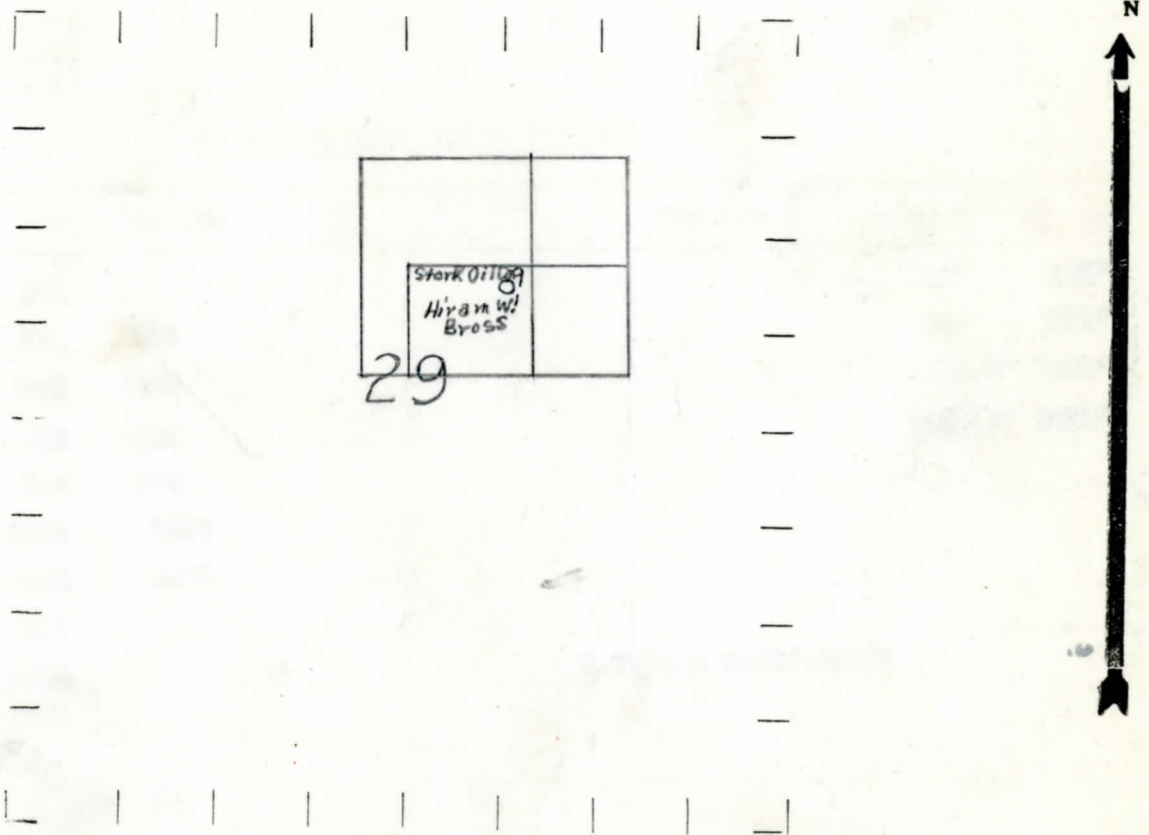
OPERATOR Stork Oil Co. Map Greenbush Township, Clinton County  
Stork Oil Co. Greenbush-Clinton

330 330 Feet from North Line of Farm  
330 330 " " East " " "  
" " South " " "  
" " West " " "  
Feet from North Line of Section  
" " East " " "  
990 990 " " South " 1/4 "  
990 990 " " West " 1/4 "

LEGEND

- LOCATION
- ⊕ DRILLING
- ☀ GAS WELL
- OIL WELL
- ⬮ SMALL OIL WELL
- ⊙ DRY HOLE
- ⬮ DRY SHOWING OIL
- ⊙ DRY SHOWING GAS
- ⊙ ABANDONED LOCATION
- ☀ ABANDONED GAS WELL
- ⬮ ABANDONED OIL WELL

NOTE: Below make tracing from map. (when no map is obtainable make sketch) showing farm, center of section, this location with measurements and also wells, dry holes, or other locations in the vicinity of this location.



REMARKS:  
\_\_\_\_\_  
\_\_\_\_\_

SIGNED

R.L. [Signature]

Superintendent or Foreman.

Michigan Producing Division

Date **May 7, 1936** No. **9**  
 State **Michigan** County **Clinton** Dist. Twp. **Greenbush** Sec. **29** Twp. **8 N** Rge. **2 W**  
 Well No. **1** (Serial No.) (County No.) **9** Farm **Hiram W. Bross** Acres  
 Operator **Stork Oil Company** Information secured ~~from~~ **Scouting Department** by  
 Date well started **3-21-36** Date well completed **5-2-36** Elevation **716.1**

PRODUCTION RECORD

1st 24 hours natural **Dry Hole**  
 2nd 24 hours natural  
 Date of shot No. of quarts From to From to  
 Date of acid No. of gallons  
 1st 24 hours after acid shot  
 2nd 24 hours after acid shot

FORMATION AND CASING RECORD

Formation	Top	Bottom	Top Pay	Bottom Pay	Remarks	Casing	
						Size	Set At
<b>Stray</b>	<b>726</b>					<b>10"</b>	<b>171'</b>
<b>Marshall</b>	<b>771</b>	<b>853</b>				<b>8 1/2"</b>	<b>571'</b>
<b>Red Rock</b>	<b>853</b>	<b>892</b>				<b>6-5/8"</b>	<b>1005'</b>
" "	<b>910</b>	<b>937</b>				<b>5-3/16"</b>	<b>2835'</b>
" "	<b>944</b>	<b>985</b>					
<b>Beres</b>	<b>2010</b>	<b>2052</b>					
<b>Antrim</b>	<b>2090</b>	<b>2418</b>					
<b>Traverse</b>	<b>2418</b>						
<b>Dundee</b>	<b>2834</b>				<b>H.F.S.W. 2855'-2858'</b>		
<b>Total Depth</b>	<b>2858</b>						

Remarks **Show free oil 2504'-2520' - salt water 2531'.**

Signed *G.H. Bell*