



Legacy Scout Tickets from Pure Oil Company

---

8-20-2021

**MGRRE\_PureOilScoutTickets\_ARTHUR, LOYAL  
D.\_1\_21037033760000**

MGRRE

*Western Michigan University*

Follow this and additional works at: <https://scholarworks.wmich.edu/pure>



Part of the Geology Commons

---

#### **WMU ScholarWorks Citation**

MGRRE, "MGRRE\_PureOilScoutTickets\_ARTHUR, LOYAL D.\_1\_21037033760000" (2021). *Legacy Scout Tickets from Pure Oil Company*. 995.

<https://scholarworks.wmich.edu/pure/995>

This Document is brought to you for free and open access via ScholarWorks at WMU. It has been accepted for inclusion in Legacy Scout Tickets from Pure Oil Company by an authorized administrator of ScholarWorks at WMU. See the National Digital Catalogue - Science Base Catalogue for more collections submitted by MGRRE.



---

**MGRRE\_PureOilScoutTickets\_ARTHUR, LOYAL D.\_1\_21037033760000**

API 21037033760000

Permit Number 3376

Lease Name ARTHUR, LOYAL D.

Well Number 1

County Clinton

Township 6N

Range 1W

Section 29

2021 DEQ or Pure co\_name BELL H E AND ATHA HUNTER

Pure Number 11

Latitude 42.88098

Longitude -84.46198

DATE July 2, 1936

LOCATION REPORT

No. 11

STATE Michigan COUNTY Clinton DIST. Victor TWP. Victor SEC. 29 TOWN 6 N RANGE 14 W

WELL No. 1 (SERIAL No. 11) FARM Loyal D. Arthur ACRES

NAME OF STREAM OR WATERS QUADRANGLE NW-SW-NW NW SW NW

OPERATOR H. E. Bell Map Victor Township, Clinton County

330 330 Feet from North Line of Farm

East " " "

South " " "

330 330 West " " "

Feet from North Line of Section

East " " "

990 990 South " 1/4 "

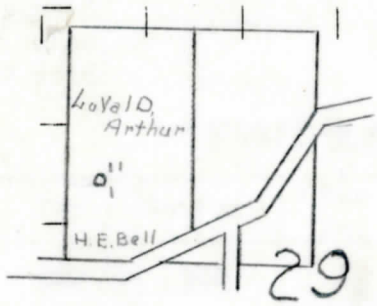
330 330 West " " "

Victor - Clinton

LEGEND

- O LOCATION
@ RIG
+ DRILLING
\* GAS WELL
● OIL WELL
◆ SMALL OIL WELL
⊖ DRY HOLE
◆ DRY SHOWING OIL
⊖ DRY SHOWING GAS
⊖ ABANDONED LOCATION
\* ABANDONED GAS WELL
● ABANDONED OIL WELL

NOTE: Below make tracing from map, (when no map is obtainable make sketch) showing farm, center of section, this location with measurements and also wells, dry holes, or other locations in the vicinity of this location.



REMARKS:

SIGNED

P. L. Yeager

Superintendent or Foreman.

Michigan Producing Division

Date. September 24, 1936 No. 11  
 State Michigan County Clinton Dist. \_\_\_\_\_  
 Twp. Victor Sec. 29 Twp. 6 N Rge. 1 W  
 Well No. 1 (Serial No.) \_\_\_\_\_  
 (County No.) 11 Farm Loyal D. Arthur Acres \_\_\_\_\_  
 Operator H. E. Bell Information secured ~~from~~ Scouting Department by \_\_\_\_\_  
 Date well started 7-21-36 Date well completed 9-18-36 Elevation 829.1

PRODUCTION RECORD

1st 24 hours natural Dry Hole  
 2nd 24 hours natural \_\_\_\_\_  
 Date of shot \_\_\_\_\_ No. of quarts \_\_\_\_\_ From \_\_\_\_\_ to \_\_\_\_\_ From \_\_\_\_\_ to \_\_\_\_\_  
 Date of acid \_\_\_\_\_ No. of gallons \_\_\_\_\_  
 1st 24 hours after acid shot \_\_\_\_\_  
 2nd 24 hours after acid shot \_\_\_\_\_

FORMATION AND CASING RECORD

Formation	Top	Bottom	Top Pay	Bottom Pay	Remarks	Casing	
						Size	Set At
Marshall	820	955			Salt water 825	10"	155
Red Rock	955	1040				8 1/4"	654
Sunbury	2090	2100				6-5/8"	1076
Berea	2100	2115				5-3/16"	2612
Antrim	2184	2365					
Traverse	2365						
Dundee	2854						
Total Depth		2997					

Remarks Oil, gas, and water 2470-2471 1/2' - show black water 2930 - hole full black water 2990-2997.

Signed H. E. Bell