



Western Michigan University
ScholarWorks at WMU

Legacy Scout Tickets from Pure Oil Company

8-20-2021

MGRRE_PureOilScoutTickets_PARKER, ED_1_21037035860000

MGRRE

Western Michigan University

Follow this and additional works at: <https://scholarworks.wmich.edu/pure>



Part of the Geology Commons

WMU ScholarWorks Citation

MGRRE, "MGRRE_PureOilScoutTickets_PARKER, ED_1_21037035860000" (2021). *Legacy Scout Tickets from Pure Oil Company*. 998.

<https://scholarworks.wmich.edu/pure/998>

This Document is brought to you for free and open access via ScholarWorks at WMU. It has been accepted for inclusion in Legacy Scout Tickets from Pure Oil Company by an authorized administrator of ScholarWorks at WMU. See the National Digital Catalogue - Science Base Catalogue for more collections submitted by MGRRE.



MGRRE_PureOilScoutTickets_PARKER, ED_1_21037035860000

API 21037035860000

Permit Number 3586

Lease Name PARKER, ED

Well Number 1

County Clinton

Township 7N

Range 1W

Section 25

2021 DEQ or Pure co_name STORK OIL CO

Pure Number 14

Latitude 42.9662

Longitude -84.37461

The Pure Oil Company
THE PURE OIL COMPANY

DATE October 1, 1936

LOCATION REPORT

No. 14

STATE Michigan COUNTY Clinton DIST. TWP. Ovid SEC. 25 TOWN 7 N RANGE 1 W

WELL No. 1 (SERIAL No. 14) FARM Ed. Parker ACRES _____

NAME OF STREAM OR WATERS _____ QUADRANGLE SW SW NE

OPERATOR Stork Oil Company Map Ovid Township, Clinton County

_____ Feet from North Line of Farm

_____ " " East " " "

330 " " South " " "

330 " " West " " "

_____ Feet from North Line of Section

_____ " " East " " "

330 " " South " 1/4 "

330 " " West " 1/4 "

LEGEND

○ LOCATION

⊙ RIG

⊕ DRILLING

☀ GAS WELL

● OIL WELL

⊙ SMALL OIL WELL

⊙ DRY HOLE

⊙ DRY SHOWING OIL

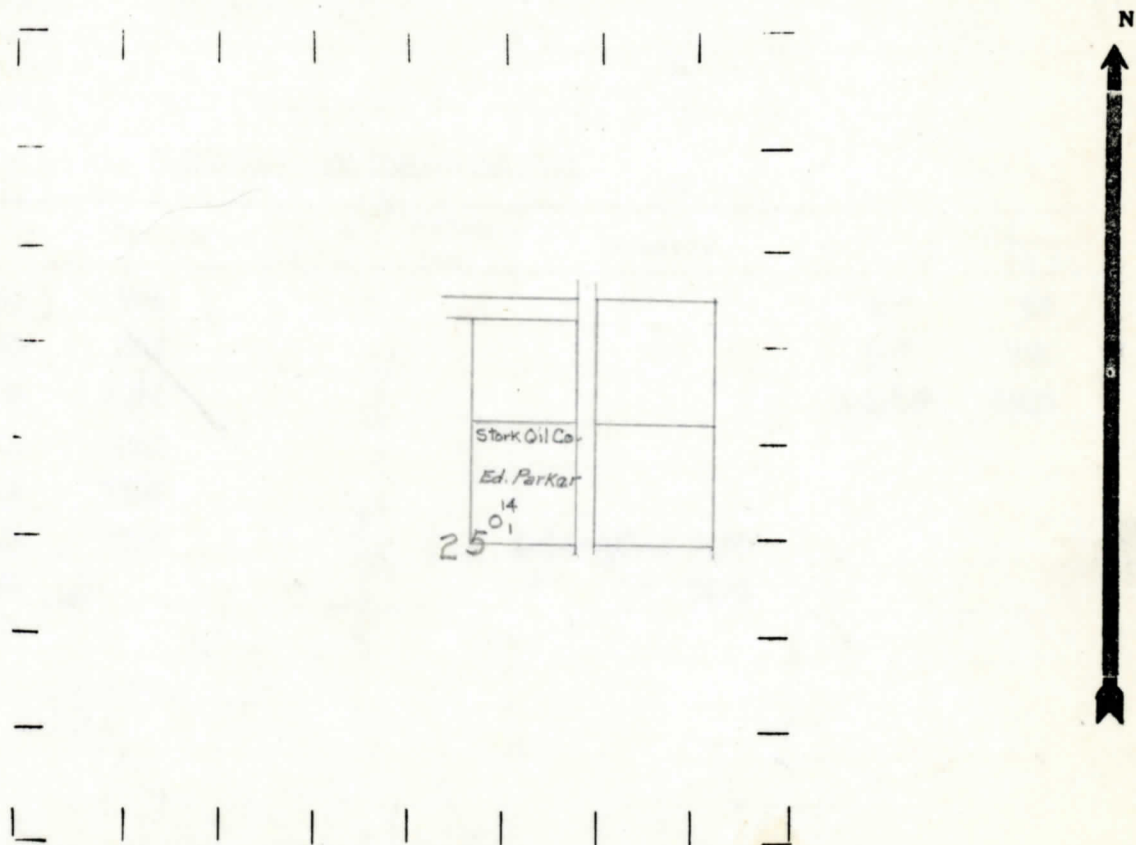
⊙ DRY SHOWING GAS

⊙ ABANDONED LOCATION

☀ ABANDONED GAS WELL

⊙ ABANDONED OIL WELL

NOTE: Below make tracing from map, (when no map is obtainable make sketch) showing farm, center of section, this location with measurements and also wells, dry holes, or other locations in the vicinity of this location.



REMARKS:

SIGNED

Superintendent or Foreman.

COMPLETION RECORD OF WELLS DRILLED BY OTHER OPERATORS

Michigan Producing Division

Date November 19, 1936 No. 14
 State Michigan County Clinton Dist. Ovid
 (Serial No.) Twp. Ovid Sec. 25 Twp. 7 N Rge. 1 W
 Well No. 1 (County No.) 14 Farm Ed. Parker Acres _____
 Operator Stork Oil Company Information secured ~~from~~ Scouting Department by _____
 Date well started 10-2-36 Date well completed 11-12-36 Elevation 774.6

PRODUCTION RECORD

1st 24 hours natural Dry Hole
 2nd 24 hours natural _____
 Date of shot _____ No. of quarts _____ From _____ to _____ From _____ to _____
 Date of acid _____ No. of gallons _____
 1st 24 hours after acid _____ shot
 2nd 24 hours after acid _____ shot

FORMATION AND CASING RECORD

Formation	Top	Bottom	Top Pay	Bottom Pay	Remarks	Casing	
						Size	Set At
Marshall	688	795				10"	76
Red Rock	795	902				8 1/2"	560
Sunbury	1905	1915				5-3/16"	2580
Berea	1915	1925					
Antrim	2029	2305					
Traverse Form.	2305	2338			salt water 2350		
Traverse Lime	2338				" " 2470		
Dundee	2682						
Total Depth		2835					

Remarks Show salt water 2713-salt water 2825-2830-filled up 1500'.

Signed _____