



Legacy Scout Tickets from Pure Oil Company

8-20-2021

**MGRRE_PureOilScoutTickets_KOEPPEN,
LOUIS_1_21037050420000**

MGRRE

Western Michigan University

Follow this and additional works at: <https://scholarworks.wmich.edu/pure>



Part of the Geology Commons

WMU ScholarWorks Citation

MGRRE, "MGRRE_PureOilScoutTickets_KOEPPEN, LOUIS_1_21037050420000" (2021). *Legacy Scout Tickets from Pure Oil Company*. 1002.

<https://scholarworks.wmich.edu/pure/1002>

This Document is brought to you for free and open access via ScholarWorks at WMU. It has been accepted for inclusion in Legacy Scout Tickets from Pure Oil Company by an authorized administrator of ScholarWorks at WMU. See the National Digital Catalogue - Science Base Catalogue for more collections submitted by MGRRE.



MGRRE_PureOilScoutTickets_KOEPPEN, LOUIS_1_21037050420000

API 21037050420000

Permit Number 5042

Lease Name KOEPPEN, LOUIS

Well Number 1

County Clinton

Township 6N

Range 3W

Section 19

2021 DEQ or Pure co_name MACDONALD C P TRUSTEE

Pure Number 18

Latitude 42.88777

Longitude -84.70188

The Pure Oil Company
 THE PURE OIL COMPANY
 COMPLETION RECORD OF WELLS DRILLED BY OTHER OPERATORS

DATE May 26, 1938

LOCATION REPORT

No. 18

STATE Michigan COUNTY Clinton DIST. Riley TWP. Riley SEC. 19 TOWN 6 N RANGE 3 W

WELL No. 1 (SERIAL No. 18) FARM Louis Kooppen ACRES

NAME OF STREAM OR WATERS _____ QUADRANGLE CE₂-SE-SE

OPERATOR C. P. McDonald, Tr. Map Riley Township, Clinton County
C.P. McDonald, Tr. Riley - Clinton

Feet from North Line of Farm
330 330 " " East " " "
660 660 " " South " " "
 " " West " " "

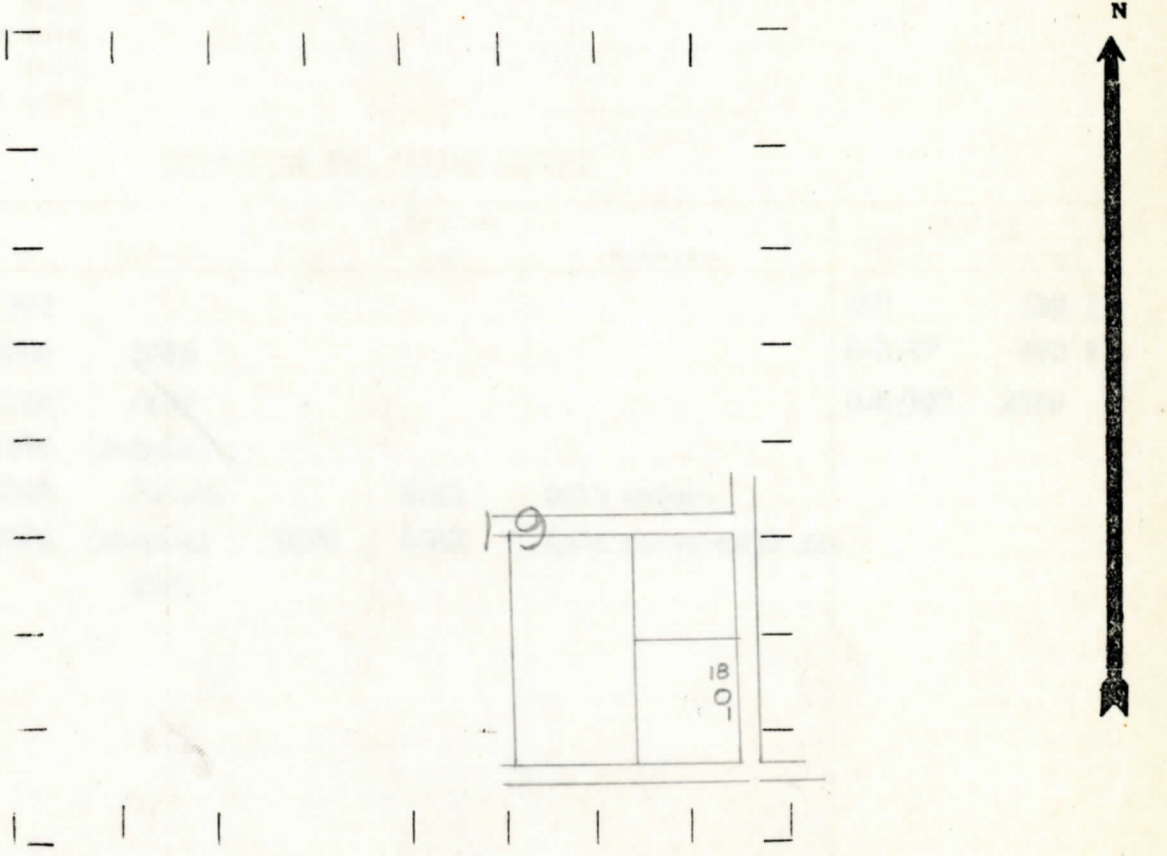
Feet from North Line of Section
330 330 " " East " " "
660 660 " " South " " "
 " " West " " "

Loc

LEGEND

- LOCATION
- ⊕ DRILLING
- ☀ GAS WELL
- OIL WELL
- ♣ SMALL OIL WELL
- ⊖ DRY HOLE
- ◆ DRY SHOWING OIL
- ⊙ DRY SHOWING GAS
- ⊘ ABANDONED LOCATION
- ☀ ABANDONED GAS WELL
- ♣ ABANDONED OIL WELL

NOTE: Below make tracing from map, (when no map is obtainable make sketch) showing farm, center of section, this location with measurements and also wells, dry holes, or other locations in the vicinity of this location.



REMARKS:

SIGNED R. L. Yeager
 Superintendent or Foreman

Michigan Producing Division

Date **April 6, 1939** No. **18**
 State **Mich.** County **Clinton** Twp. **Riley** Sec. **19** Twp. **6 N** Rge. **3 W**
 Well No. **1** (Serial No.) (County No.) **18** Farm **Louis Koeppen** Acres _____
 Operator **C. P. McDonald, Trustee** Information secured ~~from~~ **Scouting Department** By _____
 Date well started **7-5-38** Dated well completed **3-17-39** Elevation **779.1**

PRODUCTION RECORD

1st 24 hours natural **Dry Hole**
 2nd 24 hours natural _____
 Date of shot _____ No. of quarts _____ From _____ to _____ From _____ to _____
 Date of acid _____ No. of gallons _____
 shot _____
 1st 24 hours after acid _____
 shot _____
 2nd 24 hours after acid _____

FORMATION AND CASING RECORD

Formation	Top	Bottom	Top Pay	Bottom Pay	Remarks	Casing	
						Size	Set at
Marshall	780					10"	115 ?
Sunbury	2050	2075				8-1/4"	980 ?
Antrim	2120	2447				5-3/16"	2663
Traverse Lime	2476	(Sample)					
Dundee	2804	S.L.M.		2831	Salt water.		
Monroe	2874	(Sample)	2888	2892	Salt water-2600 ft.		
Total Depth		2961					

Remarks **2891' C.T.M. equals 2881' S.L.M.**

Signed **D. C. Shackelford**