



Western Michigan University
ScholarWorks at WMU

Legacy Scout Tickets from Pure Oil Company

8-20-2021

MGRRE_PureOilScoutTickets_Simon_1_na

MGRRE

Western Michigan University

Follow this and additional works at: <https://scholarworks.wmich.edu/pure>



Part of the Geology Commons

WMU ScholarWorks Citation

MGRRE, "MGRRE_PureOilScoutTickets_Simon_1_na" (2021). *Legacy Scout Tickets from Pure Oil Company*. 1008.

<https://scholarworks.wmich.edu/pure/1008>

This Document is brought to you for free and open access via ScholarWorks at WMU. It has been accepted for inclusion in Legacy Scout Tickets from Pure Oil Company by an authorized administrator of ScholarWorks at WMU. See the National Digital Catalogue - Science Base Catalogue for more collections submitted by MGRRE.



MGRRE_PureOilScoutTickets_Simon_1_na

API na

Permit Number na

Lease Name Simon

Well Number 1

County Clinton

Township 7N

Range 4W

Section 15

2021 DEQ or Pure co_name Weller & Caldwell

Pure Number 24

Latitude 42.9945821

Longitude -84.7693649

Date June 24, 1942 LOCATION REPORT A.F.E. No. _____

Division Mich. Producing District _____ Lease Simon

Acres _____ Lease No. _____ Elevation _____ Well No. 1

Quadrangle SW SW SW Sec. 15 Twp. 7 N Rge. 4 W Dallas 1175

Survey _____ County Clinton State Michigan

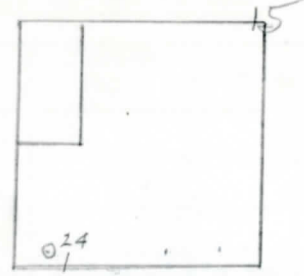
Operator C. E. Weller and T. F. Caldwell Map Dallas Township, Clinton County

330	330	Feet North of South Line of Lease
330	330	" East " West " " "
		" South " North " " "
		" West " East " " "
330	330	Feet North of South Line of Section
330	330	" East " West " " "
		" South " North " " "
		" West " East " " "

Lo

LEGEND

- Location
- ☀ Gas Well
- Oil Well
- ∅ or ○ Dry Hole
- or ● Dry Showing Oil
- ☀ Dry Showing Gas
- ⊗ Abandoned Location
- ☀ or ☀ Abandoned Gas Well
- or ● Abandoned Oil Well



Remarks: _____ Scale _____

Submitted by W Civil Engineer Approved by _____ Division Manager

Approved by _____ Vice-President - General Manager

Date **August 12, 1942** No. **24**
 State **Mich.** County **Clinton** ~~Block~~ Twp. **Dallas** Sec. **15** Twp. **7 N** Rge. **4 W**
 Well No. **1** (Serial No.) ~~(23333333)~~ **24** Farm **Simon** Acres _____
 Operator **C. E. Weller & T. F. Caldwell** Information secured ~~xxxx~~ **By Scouting Department**
 Date well started **Not started** Date well completed **Not completed.** Elevation _____

PRODUCTION RECORD

1st 24 hours natural **Location abandoned.**
 2nd 24 hours natural _____
 Date of shot _____ No. of quarts _____ From _____ to _____ From _____ to _____
 Date of acid _____ No. of gallons _____
 1st 24 hours after acid shot _____
 2nd 24 hours after acid shot _____

FORMATION AND CASING RECORD

Formation	Top	Bottom	Top Pay	Bottom Pay	Remarks	Casing	
						Size	Set at
					Location abandoned 8-10-42.		

Remarks _____

Signed **D. C. Shackelford**