



---

Legacy Scout Tickets from Pure Oil Company

---

8-20-2021

**MGRRE\_PureOilScoutTickets\_HALFMAN,  
ANTHONY\_1\_21037101360000**

MGRRE  
*Western Michigan University*

Follow this and additional works at: <https://scholarworks.wmich.edu/pure>



Part of the Geology Commons

---

#### **WMU ScholarWorks Citation**

MGRRE, "MGRRE\_PureOilScoutTickets\_HALFMAN, ANTHONY\_1\_21037101360000" (2021). *Legacy Scout Tickets from Pure Oil Company*. 1013.

<https://scholarworks.wmich.edu/pure/1013>

This Document is brought to you for free and open access via ScholarWorks at WMU. It has been accepted for inclusion in Legacy Scout Tickets from Pure Oil Company by an authorized administrator of ScholarWorks at WMU. See the National Digital Catalogue - Science Base Catalogue for more collections submitted by MGRRE.



---

**MGRRE\_PureOilScoutTickets\_HALFMAN, ANTHONY\_1\_21037101360000**

API 21037101360000

Permit Number 10136

Lease Name HALFMAN, ANTHONY

Well Number 1

County Clinton

Township 7N

Range 4W

Section 22

2021 DEQ or Pure co\_name JETTER C B AND DEKRAFFT

Pure Number 29

Latitude 42.97563

Longitude -84.77801

# THE PURE OIL COMPANY LOCATION REPORT

Date June 7, 1943 A.F.E. No. \_\_\_\_\_

Division Michigan Producing District \_\_\_\_\_ Lease Anthony Halfman

Acres \_\_\_\_\_ Lease No. \_\_\_\_\_ Elevation \_\_\_\_\_ Well No. 1 (Serial No. 29)

Quadrangle NW SW SW Sec. 22 Twp. 7 N Rge. 4 W Twp. Dallas

Survey \_\_\_\_\_ County Clinton State Michigan

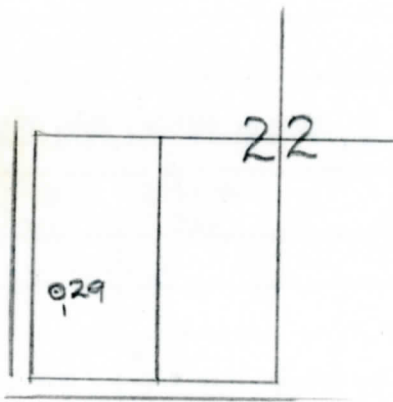
Operator Jetter and DeKrafft Map Dallas Township, Clinton Co.

<u>330</u>	<u>330</u>	Feet from North Line of Lease
_____	" "	East " " "
_____	" "	South " " "
<u>330</u>	<u>330</u>	" " West " " "
_____	_____	Feet from North Line of Section
_____	" "	East " " "
<u>990</u>	<u>990</u>	" " South " " <u>1/4</u>
<u>330</u>	<u>330</u>	" " West " " "

*Low*

### LEGEND

- Location
- ☀ Gas Well
- Oil Well
- ☀ Gas - Distillate Well
- or ○ Dry Hole
- Dry Showing Oil
- ☀ Dry Showing Gas
- ⊗ Abandoned Location
- ☀ or ☀ Abandoned Gas Well
- or ● Abandoned Oil Well
- or ○ Input Well



Scale \_\_\_\_\_

Remarks: \_\_\_\_\_  
\_\_\_\_\_  
\_\_\_\_\_

Submitted by RN Civil Engineer Approved by \_\_\_\_\_ Division Manager

Approved by \_\_\_\_\_ Vice-President - General Manager

**THE PURE OIL COMPANY**  
The Pure Oil Company

COMPLETION RECORD OF WELLS DRILLED BY OTHER OPERATORS

Michigan Producing Division

Date August 18, 1943 No. 29  
 State Mich. County Clinton District Dallas Twp. Dallas Sec. 22 Twp. 7 N Rge. 4 W  
 Well No. 1 (Serial No.) 29 Farm Anthony Halfman Acres \_\_\_\_\_  
 Operator Jetter and DeKrafft Information secured By Scouting Department  
 Date well started 6-21-43 Date well completed 8-12-43 Elevation 720.1

PRODUCTION RECORD

Dry Hole  
 1st 24 hours natural \_\_\_\_\_  
 2nd 24 hours natural \_\_\_\_\_  
 Date of shot \_\_\_\_\_ No. of quarts \_\_\_\_\_ From \_\_\_\_\_ to \_\_\_\_\_ From \_\_\_\_\_ to \_\_\_\_\_  
 Date of acid \_\_\_\_\_ No. of gallons \_\_\_\_\_  
 shot \_\_\_\_\_  
 1st 24 hours after acid \_\_\_\_\_  
 shot \_\_\_\_\_  
 2nd 24 hours after acid \_\_\_\_\_

FORMATION AND CASING RECORD

Formation	Top	Bottom	Top Pay	Bottom Pay	Remarks	Casing	
						Size	Set at
Marshall	756					10"	193
Red Rock	915	977				8-1/4"	570
Coldw. Red Rock	2020	2036				6-5/8"	1005
Antrim	2090	2454					
Traverse Lime	2485				Rainbow oil 2485 to 2486.		
					No water reported.		
Total Depth		2532					

Remarks \_\_\_\_\_

Signed D. C. Shackelford