



Western Michigan University  
ScholarWorks at WMU

---

Legacy Color Lithology Strip Logs

---

5-16-2022

**MGRRE\_LithStripLog\_STATE ROSCOMMON  
FA-1\_21143196490000**

MGRRE Western Michigan University

Follow this and additional works at: <https://scholarworks.wmich.edu/lith>



Part of the Geology Commons

---

#### **WMU ScholarWorks Citation**

Western Michigan University, MGRRE, "MGRRE\_LithStripLog\_STATE ROSCOMMON FA-1\_21143196490000" (2022). *Legacy Color Lithology Strip Logs*. 1025. <https://scholarworks.wmich.edu/lith/1025>

This Document is brought to you for free and open access by ScholarWorks at WMU. It has been accepted for inclusion in Legacy Color Lithology Strip Logs by an authorized administrator of ScholarWorks at WMU. For more information, please contact [wmu-scholarworks@wmich.edu](mailto:wmu-scholarworks@wmich.edu).



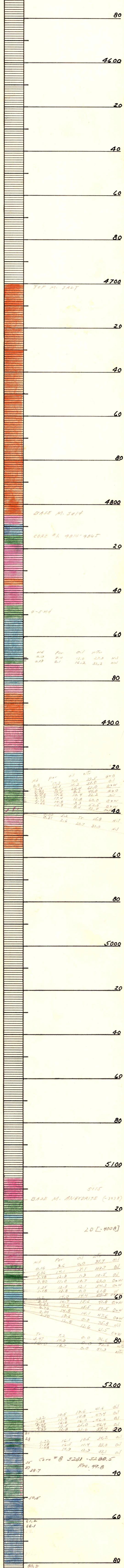
PH 19649

STATE <b>MICH.</b>	COMPANY <b>E.V. HILLIARD</b>
COUNTY	FARM <b>FA-1</b>
BLOCK	SURVEY <b>N 1/2 SW NW 29, 21N-2W</b>
SEC. <b>29</b>	
T. <b>21N</b>	R. <b>3W</b>
TOTAL DEPTH	
CONTRACTOR <b>Hilliard Drig.</b>	
COMMENCED <b>6-27-55</b>	
COMPLETED <b>8-6-55</b>	
REMARKS	
ALTITUDE <b>1127</b>	
PRODUCTION <b>S.Z. &amp; Rich.</b>	

CASING RECORD

10"
8 1/2" <b>1665</b>
20" 6 1/2"
15 1/2" 5 1/2" <b>5270 2 3/4</b>
12 1/2"

FORM 394 - For sale by Ross-Martin Co., Tulsa **4500**



Md	Por	oil	wt	
0.10	8.4	12.0	27.3	Nil
0.19	8.1	16.2	32.2	Nil

Md	Por	oil	wt	
8.8	17.3	7.0	33.5	GrO
2.86	16.1	11.2	51.0	Oil
2.51	14.1	24.4	61.0	Oil
2.86	13.5	8.2	44.0	GrO
3.28	17.6	10.4	32.2	Oil
6.07	17.4	12.8	60.0	Oil
3.73	14.8	3.3	52.5	Oil
5.66	14.9	8.4	32.0	Oil

md	Por	oil	wt	
0.00	5.2	Tr	15.8	Nil
0.31	2.6	20.7	31.0	Nil

md	Por	oil	wt	
0.16	9.6	0.0	95.7	Nil
5.36	14.1	15.1	43.7	Oil
7.48	12.9	1.3	10.5	Oil
0.80	11.0	10.7	63.0	Oil
1.25	12.3	12.1	54.3	Oil
1.18	13.8	0.0	61.8	Oil
11.2	14.0	14.4	50.5	Oil
9.20	14.7	15.6	41.8	Oil
4.82	13.4	15.5	50.5	Oil
6.76	14.8	14.1	47.6	Oil
0.00	10.6	14.1	75.3	Oil
2.50	12.8	0.0	61.5	Oil
Tr	7.2	0.0	96.6	Oil
3.47	14.9	0.0	72.6	Oil
15.0	18.7	0.0	51.3	Oil

md	Por	oil	wt	
1.22	10.5	13.6	41.6	Oil
2.38	12.8	15.8	47.4	Oil
3.45	16.6	16.0	46.4	Oil
3.74	13.5	25.0	46.4	Oil
1.85	12.8	21.6	39.4	Oil

md	Por	oil	wt	
1.22	16.1	10.5	34.2	Oil
1.18	16.5	11.4	33.0	Oil
1.48	14.9	12.9	33.1	Oil

Core #8 5231-5280.5 Rec. 49.8

TD 5287