



Western Michigan University
ScholarWorks at WMU

Legacy Scout Tickets from Pure Oil Company

8-20-2021

**MGRRE_PureOilScoutTickets_KURNCZ, JOHN ET
AL_1_21037118030000**

MGRRE
Western Michigan University

Follow this and additional works at: <https://scholarworks.wmich.edu/pure>



Part of the Geology Commons

WMU ScholarWorks Citation

MGRRE, "MGRRE_PureOilScoutTickets_KURNCZ, JOHN ET AL_1_21037118030000" (2021). *Legacy Scout Tickets from Pure Oil Company*. 1026.
<https://scholarworks.wmich.edu/pure/1026>

This Document is brought to you for free and open access via ScholarWorks at WMU. It has been accepted for inclusion in Legacy Scout Tickets from Pure Oil Company by an authorized administrator of ScholarWorks at WMU. See the National Digital Catalogue - Science Base Catalogue for more collections submitted by MGRRE.



MGRRE_PureOilScoutTickets_KURNCZ, JOHN ET AL_1_21037118030000

API 21037118030000

Permit Number 11803

Lease Name KURNCZ, JOHN ET AL

Well Number 1

County Clinton

Township 7N

Range 2W

Section 2

2021 DEQ or Pure co_name MERRILL DRILLING CO

Pure Number 42

Latitude 43.02594

Longitude -84.52019

THE PURE OIL COMPANY LOCATION REPORT

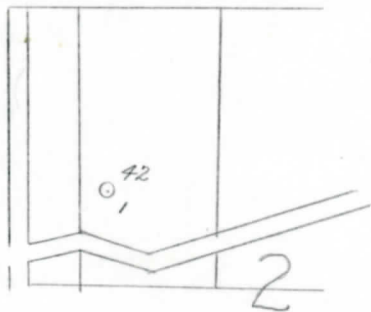
Date November 14, 1945 A.F.E. No. John Kurnecz et al
 Division Mich. Producing District _____ Lease John Kurnecz, et al
 Acres _____ Lease No. _____ Elevation _____ Well No. 1 (Serial No. 42)
 Quadrangle NE-SW-NW Sec. 22 Twp. 7 N Rge. 2 W ~~DNK~~ ~~DNK~~ Bingham
 Survey _____ County Clinton State Michigan
 Operator Merrill Drilling Co. Map Bingham Township, Clinton County
Merrill Drilling Company

<u>330</u>	<u>330</u>	Feet from North Line of Lease
<u>405</u>	<u>405</u>	" " East " " "
		" " South " " "
		" " West " " "
		Feet from North Line of Section
<u>990</u>	<u>990</u>	" " East " " "
<u>915</u>	<u>915</u>	" " South " " <u>1/4</u>
		" " West " " "

LEGEND

- Location
- ☀ Gas Well
- Oil Well
- ☀ Gas - Distillate Well
- ∅ or ○ Dry Hole
- Dry Showing Oil
- ☀ Dry Showing Gas
- ⊗ Abandoned Location
- ☀ or ⊗ Abandoned Gas Well
- or ● Abandoned Oil Well
- or ○ Input Well

Handwritten:
 NE 45
 Sp 11-12-45



Remarks: _____

Scale _____

Submitted by CB Civil Engineer Approved by _____ Division Manager
 Approved by _____ Vice-President - General Manager

The Pure Oil Company
 COMPLETION RECORD OF WELLS DRILLED BY OTHER OPERATORS

January 9, 1946 Division
 Michigan Producing

Date January 9, 1946 No. 42
 State Mich. County Clinton Dist. Bingham Twp. Bingham Sec. 2 Twp. 7 N Rge. 2 W
 Well No. 1 (Serial No.) 42 Farm John Kurncz, et al Acres
 Operator Merrill Drilling Company Information secured ~~from~~ Scouting Department By
 Date well started 11-12-45 Date well completed 12-29-45 Elevation 723.8

PRODUCTION BOARD

1st 24 hours natural DRY HOLE
 2nd 24 hours natural
 Date of shot No. of quarts From To From to
 Date of acid No. of gallons
 shot
 1st 24 hours after acid
 shot
 2nd 24 hours after acid

FORMATION AND CASING RECORD

Formation	Top	Bottom	Top Pay	Bottom Pay	Remarks	Casing	
						Size	Set at
Brown Dolomite	634	645	(+90)			10"	155
Mich. Stray	652	(+72)				8-1/4"	254
Marshall	726	960	(-2)			6-5/8"	977
Berea	2013	2030	(-1289)			5-3/16"	2774
Antrim	2060	(-1336)					
Traverse Lime	2419	SLM.	(-1685)		Small show oil 2437-2438; 300 ft.		
				(-1713)			
Dundee	2774	SLM.	(-2050)		S.W. 2438-2458. H.F.S.W. 2915- 2919.	(-1714) (-2191)	
Total Depth		2919	(-2195)				

Remarks 2415' equals 2419' SLM; 2772' equals 2774' SLM.

Signed D. C. Shackelford