



Western Michigan University
ScholarWorks at WMU

Legacy Color Lithology Strip Logs

5-16-2022

**MGRRE_LithStripLog_DESGRANDCHAMP, ELMER H ET AL UNIT
1_21147202360000**

MGRRE Western Michigan University

Follow this and additional works at: <https://scholarworks.wmich.edu/lith>



Part of the Geology Commons

WMU ScholarWorks Citation

Western Michigan University, MGRRE, "MGRRE_LithStripLog_DESGRANDCHAMP, ELMER H ET AL UNIT 1_21147202360000" (2022). *Legacy Color Lithology Strip Logs*. 1075.

<https://scholarworks.wmich.edu/lith/1075>

This Document is brought to you for free and open access by ScholarWorks at WMU. It has been accepted for inclusion in Legacy Color Lithology Strip Logs by an authorized administrator of ScholarWorks at WMU. For more information, please contact wmu-scholarworks@wmich.edu.



20236

STATE MICH		COMPANY Sun Oil Co.	
COUNTY ST. CLAIR		FARM Desgrand Champ	WELL NO. 1.
BLOCK Casco		SURVEY SE N W N E 22, 4 N - 15 E	
SEC. 22		2842	
T. 4N	R. 15E	TOTAL DEPTH	
		CONTRACTOR U R C.	
		COMMENCED 9-12-54	
		COMPLETED 9-30-54	
ALTITUDE 646		REMARKS D & A	
PRODUCTION			

CASING RECORD

	10"
	8 1/4"
20"	6 3/4"
15 1/2"	5 3/8"
12 1/2"	

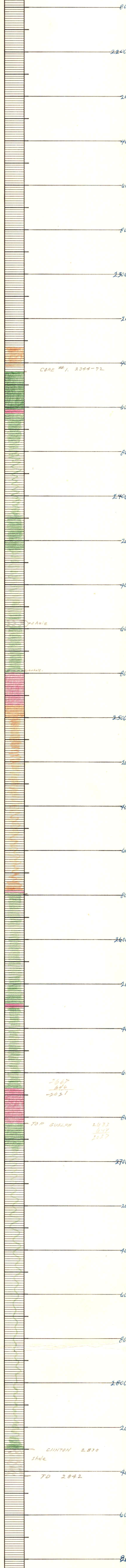
SHOT QUARTS BETWEEN

FORM 394 - For sale by Ross-Martin Co., Tulsa

2100

Dun 883
 Anhyd 1807
 Solo 1021
 B.I. 1474
 1 1/2 salt 1754

A-2 salt 2333
 B. May 2683 (-2637)
 Clinton 2828



2200

20

40

60

80

2300

20

40

60

80

2400

20

40

60

80

2500

20

40

60

80

2600

20

40

60

80

2800

20

40

60

80

2900

20

40

60

80

2800

20

40

60

80

2900

20

40

60

80

2900

20

40

60

80

2900

20

40

60

80

2900

20

40

60

80

2900

20

40

60

80

2900

20

40

60

80

2900

20

40

60

80

2900

20

40

60

80

2900

20

40

60

80

2900

20

40

60

80

2900

20

40

60

80

2900

20

40

60

80

2900

20

40

60

80

2900

20

40

60

80

2900

20

40

60

80

2900

20

40

60

80

2900

20

40

60

80

2900

20

40

60

80

2900

20

40

60

80

2900

20

40

60

80

2900

20

40

60

80

2900

20

40

60

80

2900

20

40

60

80

2900

20

40

60

80

2900

20

40

60

80

2900

20

40

60

80

2900

20

40

60

80

2900

20

40

60

80

2900

20

40

60

80

2900

20

40

60

80

2900

20

40

60

80

2900

20

40

60

80

2900

20

40

60

80

2900

20

40

60

80

2900

20

40

60

80

2900

20

40

60

80

2900

20

40

60

80

2900

20

40

60

80

2900

20

40

60

80

2900

20

40

60

80

2900

20

40

60

80

2900

20

40

60

80

2900

20

40

60

80

2900

20

40

60

80

2900

20

40

60

80

2900

20

40

60

80

2900

20

40

60

80

2900

20

40

60

80

2900

20

40

60

80

2900

20

40

60

80

2900

20

40

60

80