



Western Michigan University
ScholarWorks at WMU

Legacy Scout Tickets from Pure Oil Company

8-20-2021

**MGRRE_PureOilScoutTickets_Doherty, Sara M et
al_1_21035048520000**

MGRRE
Western Michigan University

Follow this and additional works at: <https://scholarworks.wmich.edu/pure>



Part of the Geology Commons

WMU ScholarWorks Citation

MGRRE, "MGRRE_PureOilScoutTickets_Doherty, Sara M et al_1_21035048520000" (2021). *Legacy Scout Tickets from Pure Oil Company*. 1077.
<https://scholarworks.wmich.edu/pure/1077>

This Document is brought to you for free and open access via ScholarWorks at WMU. It has been accepted for inclusion in Legacy Scout Tickets from Pure Oil Company by an authorized administrator of ScholarWorks at WMU. See the National Digital Catalogue - Science Base Catalogue for more collections submitted by MGRRE.



MGRRE_PureOilScoutTickets_Doherty, Sara M et al_1_21035048520000

API 21035048520000

Permit Number 4852

Lease Name Doherty, Sara M et al

Well Number 1

County Clare

Township 18N

Range 05W

Section 17

2021 DEQ or Pure co_name Mid Michigan Gas Storage Company

Pure Number 51

Latitude 43.9476147

Longitude -84.9340227

The Pure Oil Company
THE PURE OIL COMPANY

COMPLETION RECORD OF WELLS DRILLED BY OTHER OPERATORS

DATE March 10, 1938

LOCATION REPORT

No. 51STATE MichiganCOUNTY ClareDIST. GrantTWP. GrantSEC. 25TOWN 17 NRANGE 4 WWELL No. 1(SERIAL No. 51)

FARM

Sara M. Doherty, et al.

ACRES

NAME OF STREAM OR WATERS

QUADRANGLE

NW-SW-SWNW SW SW

OPERATOR

American Production Company

Map

Grant Township, Clare CountyAmer. Prod. Co.Grant + Clare

Feet from North Line of Farm

1300 1300

" " East " " "

1300 1300

" " South " " "

" " West " " "

Feet from North Line of Section

1300 1300

" " East " " "

1300 1300

" " South " " "

20 20

" " West " " "

LEGEND

○ LOCATION

① RIG

⊕ DRILLING

☼ GAS WELL

● OIL WELL

● SMALL OIL WELL

⊙ DRY HOLE

⊙ DRY SHOWING OIL

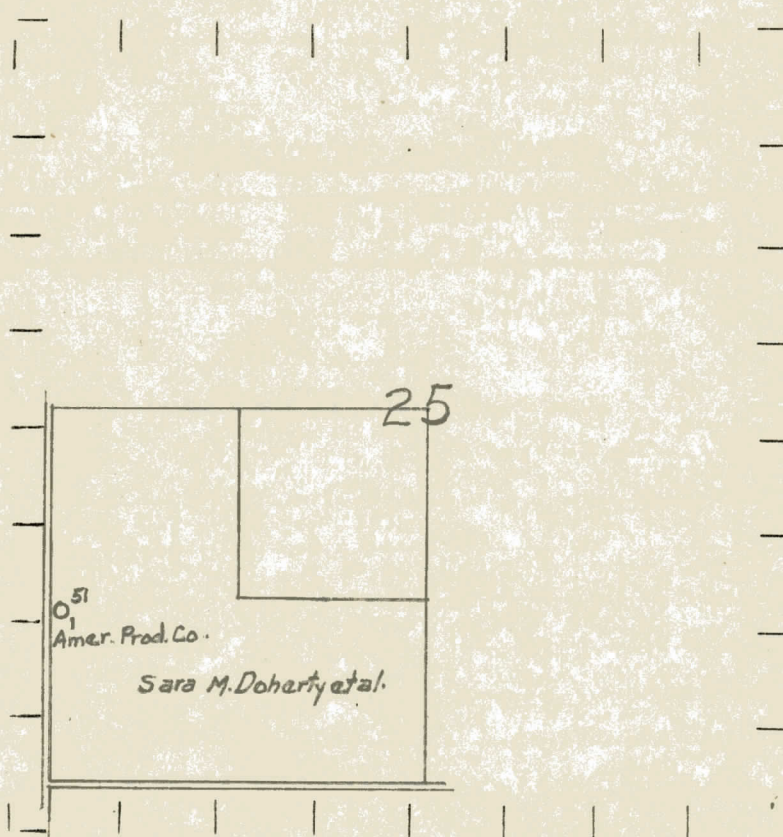
⊙ DRY SHOWING GAS

⊙ ABANDONED LOCATION

☼ ABANDONED GAS WELL

● ABANDONED OIL WELL

NOTE: Below make tracing from map, (when no map is obtainable make sketch) showing farm, center of section, this location with measurements and also wells, dry holes, or other locations in the vicinity of this location.



REMARKS:

SIGNED

Superintendent or Foreman.

Signed **D. C. Shackelford**