



Western Michigan University
ScholarWorks at WMU

Legacy Scout Tickets from Pure Oil Company

8-20-2021

**MGRRE_PureOilScoutTickets_Costello, Howard et
al_1_21035048530000**

MGRRE
Western Michigan University

Follow this and additional works at: <https://scholarworks.wmich.edu/pure>



Part of the Geology Commons

WMU ScholarWorks Citation

MGRRE, "MGRRE_PureOilScoutTickets_Costello, Howard et al_1_21035048530000" (2021). *Legacy Scout Tickets from Pure Oil Company*. 1078.
<https://scholarworks.wmich.edu/pure/1078>

This Document is brought to you for free and open access via ScholarWorks at WMU. It has been accepted for inclusion in Legacy Scout Tickets from Pure Oil Company by an authorized administrator of ScholarWorks at WMU. See the National Digital Catalogue - Science Base Catalogue for more collections submitted by MGRRE.



MGRRE_PureOilScoutTickets_Costello, Howard et al_1_21035048530000

API 21035048530000

Permit Number 4853

Lease Name Costello, Howard et al

Well Number 1

County Clare

Township 17N

Range 04W

Section 26

2021 DEQ or Pure co_name Michigan Consolidated Gas Company

Pure Number 52

Latitude 43.83308

Longitude -84.76314

The Pure Oil Company
THE PURE OIL COMPANY

COMPLETION RECORD OF WELLS DRILLED BY OTHER OPERATORS

DATE March 10, 1938

LOCATION REPORT

No. 52STATE Michigan COUNTY Clare DIST. Grant TWP. Grant SEC. 25 TOWN 17 N RANGE 4 WWELL No. 1 (SERIAL No. 52) FARM Howard Costello, et al. ACRESNAME OF STREAM OR WATERS _____ QUADRANGLE SW-SW-NEOPERATOR American Production Company Map Grant Township, Clare County1300 1300 Feet from North Line of FarmGrant-Clare.1350 1300 " " East " " "

" " South " " "

" " West " " "

Feet from North Line of Section

" " East " " "

20 20 " " South " " "20 20 " " West " " "

LEGEND

○ LOCATION

① RIG

⊕ DRILLING

☼ GAS WELL

● OIL WELL

● SMALL OIL WELL

⊙ DRY HOLE

⊙ DRY SHOWING OIL

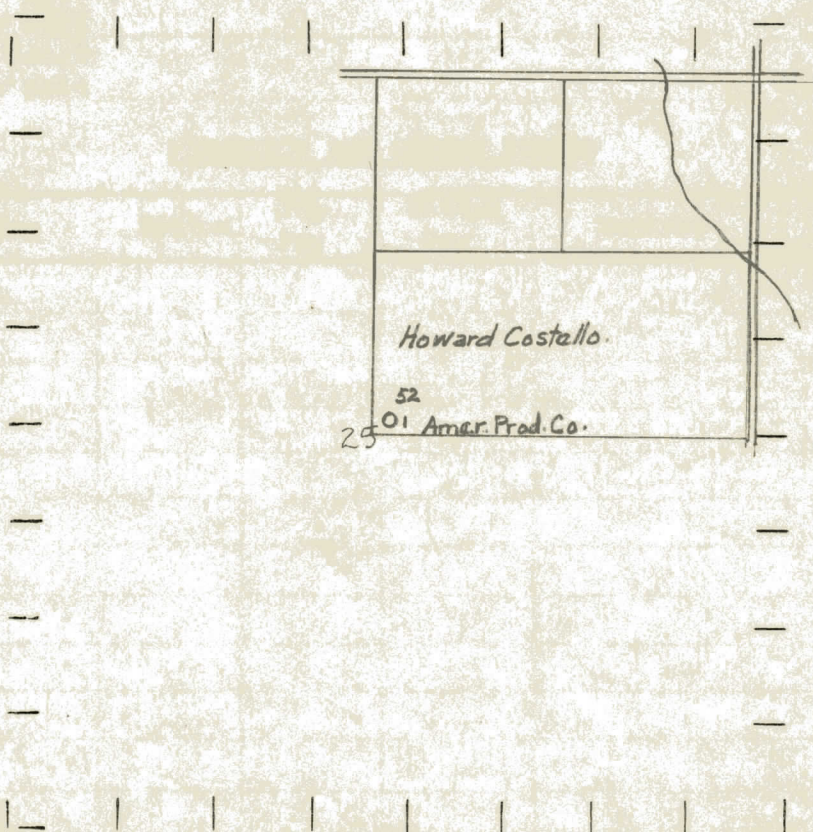
⊙ DRY SHOWING GAS

⊙ ABANDONED LOCATION

☼ ABANDONED GAS WELL

● ABANDONED OIL WELL

NOTE: Below make tracing from map, (when no map is obtainable make sketch) showing farm, center of section, this location with measurements and also wells, dry holes, or other locations in the vicinity of this location.



REMARKS:

SIGNED

Superintendent or Foreman.

Signed D. C. Shackelford