



Western Michigan University
ScholarWorks at WMU

Legacy Scout Tickets from Pure Oil Company

8-20-2021

**MGRRE_PureOilScoutTickets_Bradley, Mabel W et
al_1_21035048500000**

MGRRE
Western Michigan University

Follow this and additional works at: <https://scholarworks.wmich.edu/pure>



Part of the Geology Commons

WMU ScholarWorks Citation

MGRRE, "MGRRE_PureOilScoutTickets_Bradley, Mabel W et al_1_21035048500000" (2021). *Legacy Scout Tickets from Pure Oil Company*. 1083.
<https://scholarworks.wmich.edu/pure/1083>

This Document is brought to you for free and open access via ScholarWorks at WMU. It has been accepted for inclusion in Legacy Scout Tickets from Pure Oil Company by an authorized administrator of ScholarWorks at WMU. See the National Digital Catalogue - Science Base Catalogue for more collections submitted by MGRRE.



MGRRE_PureOilScoutTickets_Bradley, Mabel W et al_1_21035048500000

API 21035048500000

Permit Number 4850

Lease Name Bradley, Mabel W et al

Well Number 1

County Clare

Township 17N

Range 04W

Section 35

2021 DEQ or Pure co_name Michigan Consolidated Gas Company

Pure Number 59

Latitude 43.82844

Longitude -84.75282

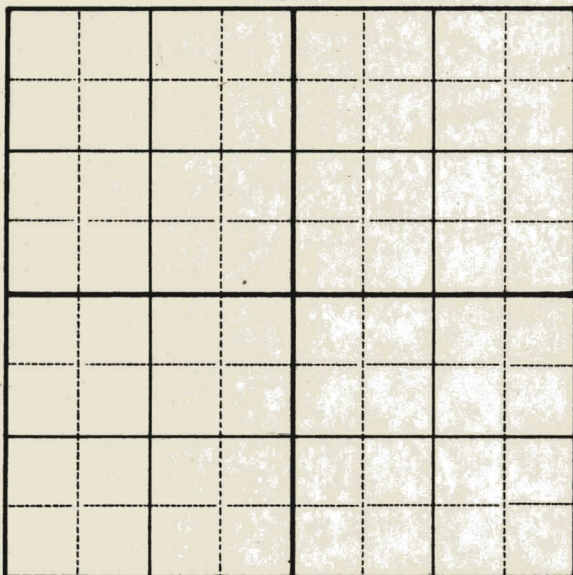
WELL REPORT - OUTSIDE OPERATIONS

SERIAL NO. 59STATE Michigan ~~MSB~~ CO. ClareOPERATOR Michigan Consolidated Gas Co.FARM Mabel W. Bradley, et al WELL NO. 1TWP. Grant S. 35 T. 17N R. 4W
~~XSUBWICK~~LOC. NW NE NEWILDCAT ☐ FIELD ☐ FIELD NAME _____

MAP NO. _____ CO-ORD. _____ ELEV. _____

STATUS Plugged and abandoned - 11-10-53Total Depth - 1310'

NORTH

DATE 1-7-54 SCOUT JEC

COMPLETION RECORD OF WELLS DRILLED BY OTHER OPERATORS

DATE May 12, 1938

LOCATION REPORT

No. 59

STATE Michigan COUNTY Clare ~~POST~~ TWP. Grant SEC. 35 TOWN 17 N RANGE 4 W

WELL No. 1 (SERIAL No. 59) FARM Mabel W. Bradley, et al ACRES 1.75

NAME OF STREAM OR WATERS..... QUADRANGLE NW NE NE

OPERATOR American Production Company Map Grant Township, Clare County

American Prod. Co

Grant Clara

Feet from North Line of Farm

116a160

“ “ East “ “ “

10001000

“ “ South “ “ “

“ “ West “ “ “

Feet from North Line of Section

“ “ East “ “ “

23202320

" " South " 1 1/4 "

148 01480

" " West " 1/4 "

○ LOCATION

⊕ RIG

⊕ DRILLING

 GAS WELL

● OIL WELL

 SMALL OIL WELL

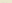
LEGEND

 DRY HOLE

• DRY SHOWING OIL

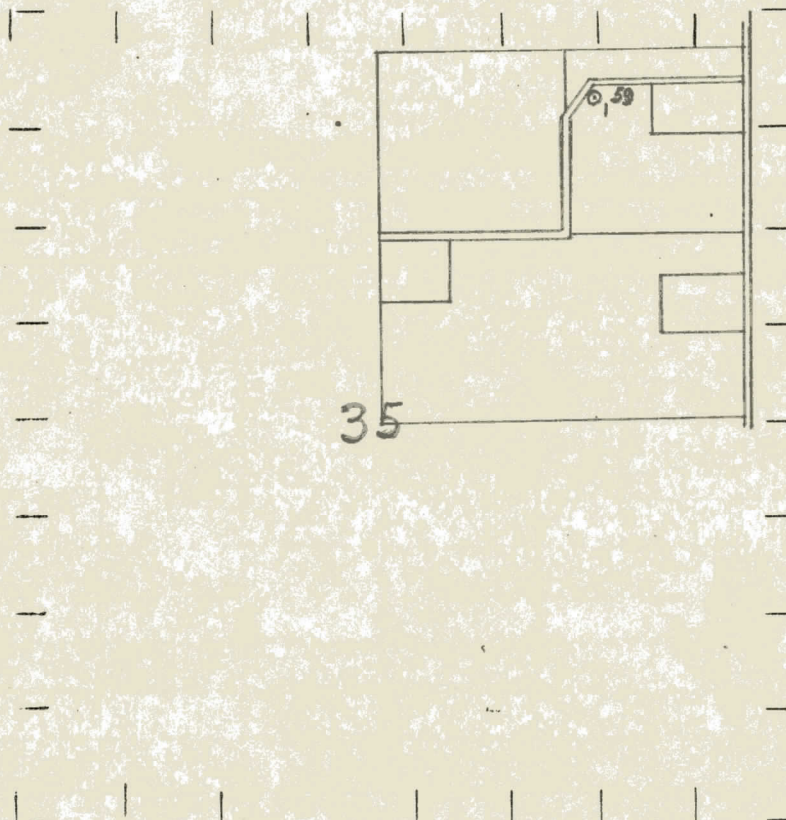
☀ DRY SHOWING GAS

 ABANDONED LOCATION

 ABANDONED GAS WELL

● ABANDONED OIL WELL

NOTE: Below make tracing from map, (when no map is obtainable make sketch) showing farm, center of section, this location with measurements and also wells, dry holes, or other locations in the vicinity of this location.



REMARKS:

SIGNED

Superintendent or Foreman.

