



Western Michigan University
ScholarWorks at WMU

Legacy Scout Tickets from Pure Oil Company

8-20-2021

**MGRRE_PureOilScoutTickets_Clare County-
State_1_21035052090000**

MGRRE
Western Michigan University

Follow this and additional works at: <https://scholarworks.wmich.edu/pure>



Part of the Geology Commons

WMU ScholarWorks Citation

MGRRE, "MGRRE_PureOilScoutTickets_Clare County-State_1_21035052090000" (2021). *Legacy Scout Tickets from Pure Oil Company*. 1094.
<https://scholarworks.wmich.edu/pure/1094>

This Document is brought to you for free and open access via ScholarWorks at WMU. It has been accepted for inclusion in Legacy Scout Tickets from Pure Oil Company by an authorized administrator of ScholarWorks at WMU. See the National Digital Catalogue - Science Base Catalogue for more collections submitted by MGRRE.



MGRRE_PureOilScoutTickets_Clare County-State_1_21035052090000

API 21035052090000

Permit Number 5209

Lease Name Clare County-State

Well Number 1

County Clare

Township 19N

Range 06W

Section 33

2021 DEQ or Pure co_name McClanahan Oil Company

Pure Number 72

Latitude 43.99217

Longitude -85.0446

THE PURE OIL COMPANY
THE PURE OIL COMPANY

Date November 11, 1944 LOCATION REPORT A.F.E. No. _____
Division Mich. Producing District _____ Lease Clare County - State
Acres _____ Lease No. _____ Elevation _____ Well No. 1 (Serial No. 72)
Quadrangle SE NW SW Sec. 33 Twp. 19 N Rge. 6 W ~~SE NW SW~~ Redding
Survey _____ County Clare State Michigan
Operator McClanahan Oil Company Map Redding Township, Clare County

Feet from North Line of Lease			
_____	" "	East	" " "
_____	" "	South	" " "
_____	" "	West	" " "
Feet from North Line of Section			
_____	" "	East	" " "
_____	" "	South	" " "
_____	" "	West	" " "

LEGEND
○ Location

Gas Well	Dry Showing Gas
● Oil Well	Abandoned Location
Gas - Distillate Well	or Abandoned Gas Well
or Dry Hole	or Abandoned Oil Well
Dry Showing Oil	or Input Well

Plugged and abandoned 9-5-44.
Total Depth 3889.



Remarks: _____ Scale _____
Submitted by _____ Approved by _____ Division Manager
Civil Engineer
Approved by _____ Vice-President - General Manager

Division

Michigan

Date

August 4, 1938

Form No. 1

1938

State

Michigan

County

Clare

Well No.

1

(Serial No.)

72

Farm

Operator

McClanahan Oil Company

Map

Redding Township, Clare County

Location Report

No.

72

Town

19 N

Range

6 W

Acres

Legend

Feet from North Line of Farm

3330

East

Feet from North Line of Section

99090

East

Feet from North Line of Section

99090

South

Feet from North Line of Section

99090

West

Legend

LOCATION

RIG

DRILLING

GAS WELL

OIL WELL

SMALL OIL WELL

DRY HOLE

DRY SHOWING OIL

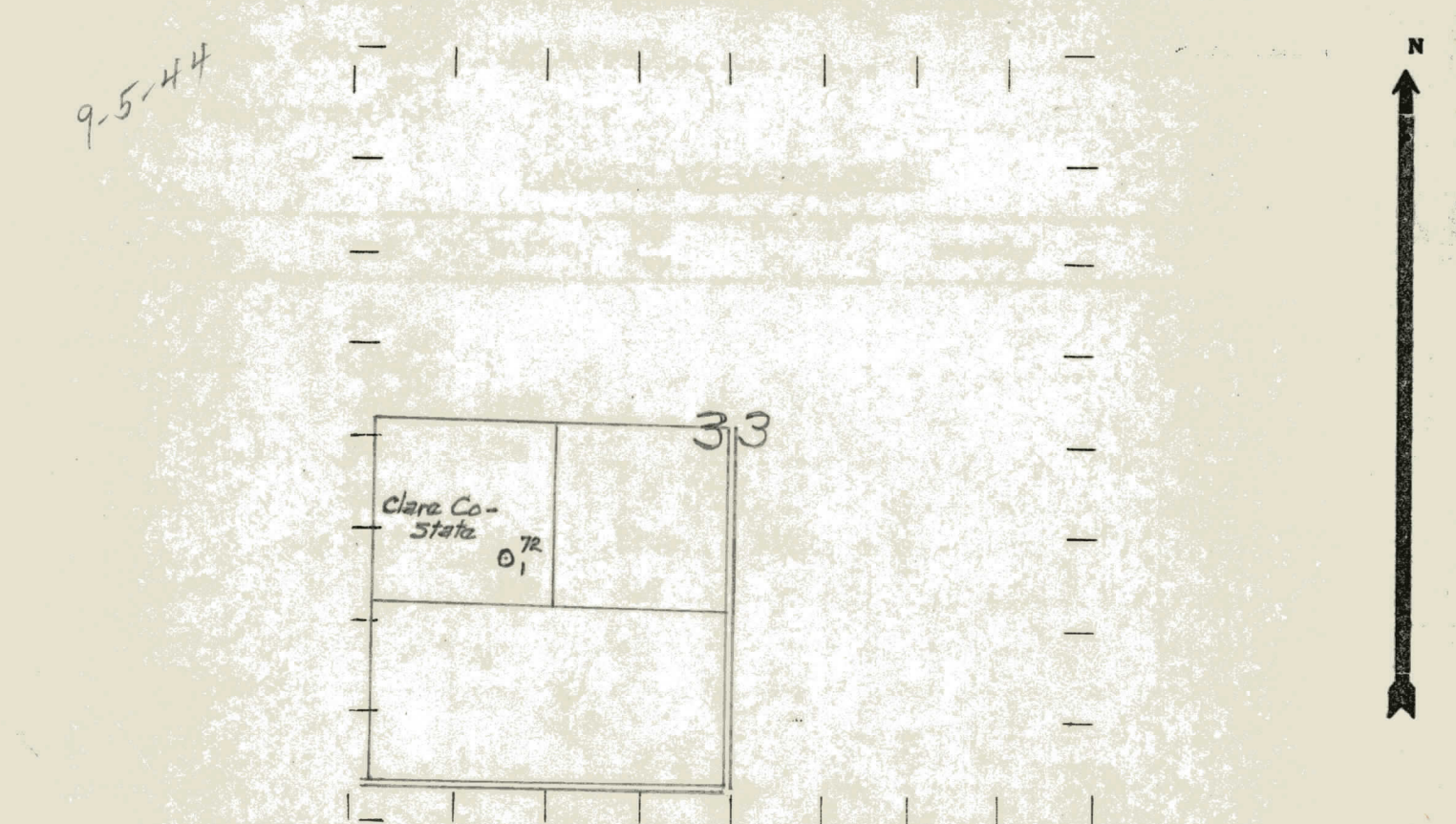
DRY SHOWING GAS

ABANDONED LOCATION

ABANDONED GAS WELL

ABANDONED OIL WELL

NOTE: Below make tracing from map. (when no map is obtainable make sketch) showing farm, center of section, this location with measurements and also wells, dry holes, or other locations in the vicinity of this location.



REMARKS:

SIGNED

Superintendent or Foreman

Signed D. C. Shackelford