



Western Michigan University
ScholarWorks at WMU

Legacy Scout Tickets from Pure Oil Company

8-20-2021

MGRRE_PureOilScoutTickets_Fell, L. G._1_21035052140000

MGRRE

Western Michigan University

Follow this and additional works at: <https://scholarworks.wmich.edu/pure>



Part of the Geology Commons

WMU ScholarWorks Citation

MGRRE, "MGRRE_PureOilScoutTickets_Fell, L. G._1_21035052140000" (2021). *Legacy Scout Tickets from Pure Oil Company*. 1095.

<https://scholarworks.wmich.edu/pure/1095>

This Document is brought to you for free and open access via ScholarWorks at WMU. It has been accepted for inclusion in Legacy Scout Tickets from Pure Oil Company by an authorized administrator of ScholarWorks at WMU. See the National Digital Catalogue - Science Base Catalogue for more collections submitted by MGRRE.



MGRRE_PureOilScoutTickets_Fell, L. G._1_21035052140000

API 21035052140000

Permit Number 5214

Lease Name Fell, L. G.

Well Number 1

County Clare

Township 19N

Range 06W

Section 33

2021 DEQ or Pure co_name Socony Mobil Oil Company, Incorporated

Pure Number 73

Latitude 43.98861

Longitude -85.02958

SERIAL NO. 75

Total Depth 3897'.

NORTH

[illegible]

DATE 12-13-50 SCOUT H. J. G.

THE PURE OIL COMPANY
COMPLETION RECORD OF WELLS DRILLED BY OTHER OPERATORS
LOCATION REPORT

DATE August 11, 1938

No. 73

STATE Michigan COUNTY Clare DIST. Redding SEC. 33 TOWN 19 N RANGE 6 W

WELL No. 1 (SERIAL No. 73) FARM L. G. Fell ACRES

NAME OF STREAM OR WATERS QUADRANGLE SE SE SE

OPERATOR Socony-Vacuum Oil Company, Inc. Map Redding Township, Clare County

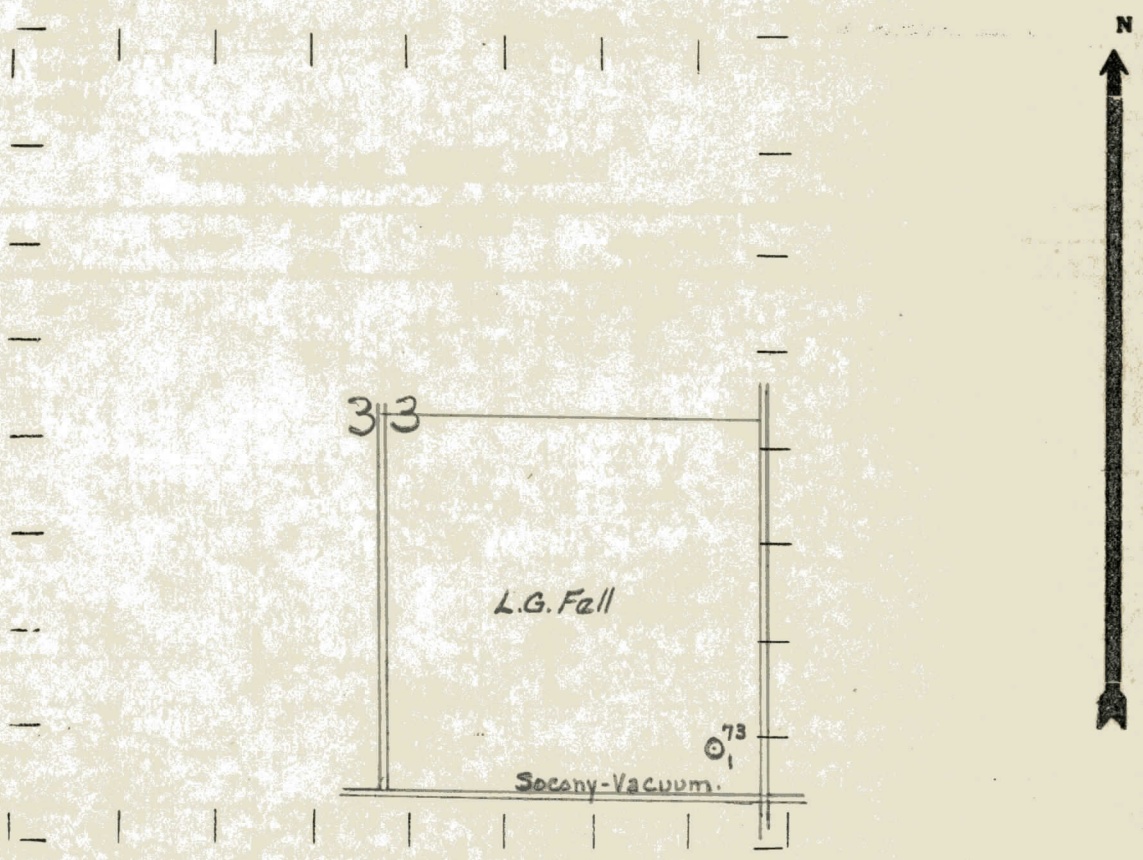
Socony-Vacuum Oil Co. Feet from North Line of Farm

330 330 " " East " " "
330 330 " " South " " "
" " West " " "

Feet from North Line of Section
330 330 " " East " " "
330 330 " " South " " "
" " West " " "

- LEGEND**
- LOCATION
 - ⊕ RIG
 - ⊕ DRILLING
 - ☼ GAS WELL
 - OIL WELL
 - ⬮ SMALL OIL WELL
 - ⊖ DRY HOLE
 - ⬮ DRY SHOWING OIL
 - ☼ DRY SHOWING GAS
 - ⊖ ABANDONED LOCATION
 - ☼ ABANDONED GAS WELL
 - ⬮ ABANDONED OIL WELL

NOTE: Below make tracing from map. (when no map is obtainable make sketch) showing farm, center of section, this location with measurements and also wells, dry holes, or other locations in the vicinity of this location.



REMARKS:

SIGNED

R. L. Y.

Superintendent or Foreman.

Michigan Producing Division

Date **October 20, 1938**

No. 73

State Mich. County Clare Twp. Hedding Sec. 33 Twp. 19 N Rge. 6 W

Well No. 1 (Serial No.) 73 Farm L. G. Fell Acres

Operator **Soco-Vacuum Oil Co., Inc.** Information secured ^{By} ~~From~~ **Scouting Department**

Date well started **8-24-58** Date well completed **10-8-58** Elevation **1085.6**

PRODUCTION RECORD

1st 24 hours natural **140 Barrels**

2nd 24 hours natural

[illegible]

Date of acid **10-11-58** No. of gallons **500**

1st 24 hours after acid **899 Barrels Pinched (Est. 2500 Barrels)**

shot

2nd 24 hours after acid

FORMATION AND CASING RECORD

[illegible]

Remarks H.F.S.W. 1625'-1632'- show gas 1345'-1348'.

Signed

D. C. Shackelford