



Western Michigan University
ScholarWorks at WMU

Legacy Scout Tickets from Pure Oil Company

8-20-2021

MGRRE_PureOilScoutTickets_Beck, Myrtle et
al_1_21035054000000

MGRRE
Western Michigan University

Follow this and additional works at: <https://scholarworks.wmich.edu/pure>



Part of the Geology Commons

WMU ScholarWorks Citation

MGRRE, "MGRRE_PureOilScoutTickets_Beck, Myrtle et al_1_21035054000000" (2021). *Legacy Scout Tickets from Pure Oil Company*. 1114.
<https://scholarworks.wmich.edu/pure/1114>

This Document is brought to you for free and open access via ScholarWorks at WMU. It has been accepted for inclusion in Legacy Scout Tickets from Pure Oil Company by an authorized administrator of ScholarWorks at WMU. See the National Digital Catalogue - Science Base Catalogue for more collections submitted by MGRRE.



MGRRE_PureOilScoutTickets_Beck, Myrtle et al_1_21035054000000

API 21035054000000

Permit Number 5400

Lease Name Beck, Myrtle et al

Well Number 1

County Clare

Township 18N

Range 06W

Section 10

2021 DEQ or Pure co_name Daily Crude Oil Company The

Pure Number 100

Latitude 43.9687234

Longitude -85.0175709

The Pure Oil Company
THE PURE OIL COMPANYDATE 9/23/38

LOCATION REPORT

No. 100

STATE Michigan COUNTY Clare DIST. Freeman SEC. 10 TOWN 18 N RANGE 6 W
 WELL No. 1 (SERIAL No. 100) FARM Myrtle Beck ACRES
 NAME OF STREAM OR WATERS _____ QUADRANGLE NW-SW-NE
 OPERATOR Daily Crude Oil Co. Map Freeman Twp., Clare County

250 Feet from North Line of Farm
 " " East " " "
 " " South " " "
1570 " " West " " "
 Feet from North Line of Section
 " " East " " "
1070 " " South " " 1/4
250 " " West " " 1/4

LEGEND

○ LOCATION

① RIG

⊕ DRILLING

☼ GAS WELL

● OIL WELL

⦿ SMALL OIL WELL

☉ DRY HOLE

⦿ DRY SHOWING OIL

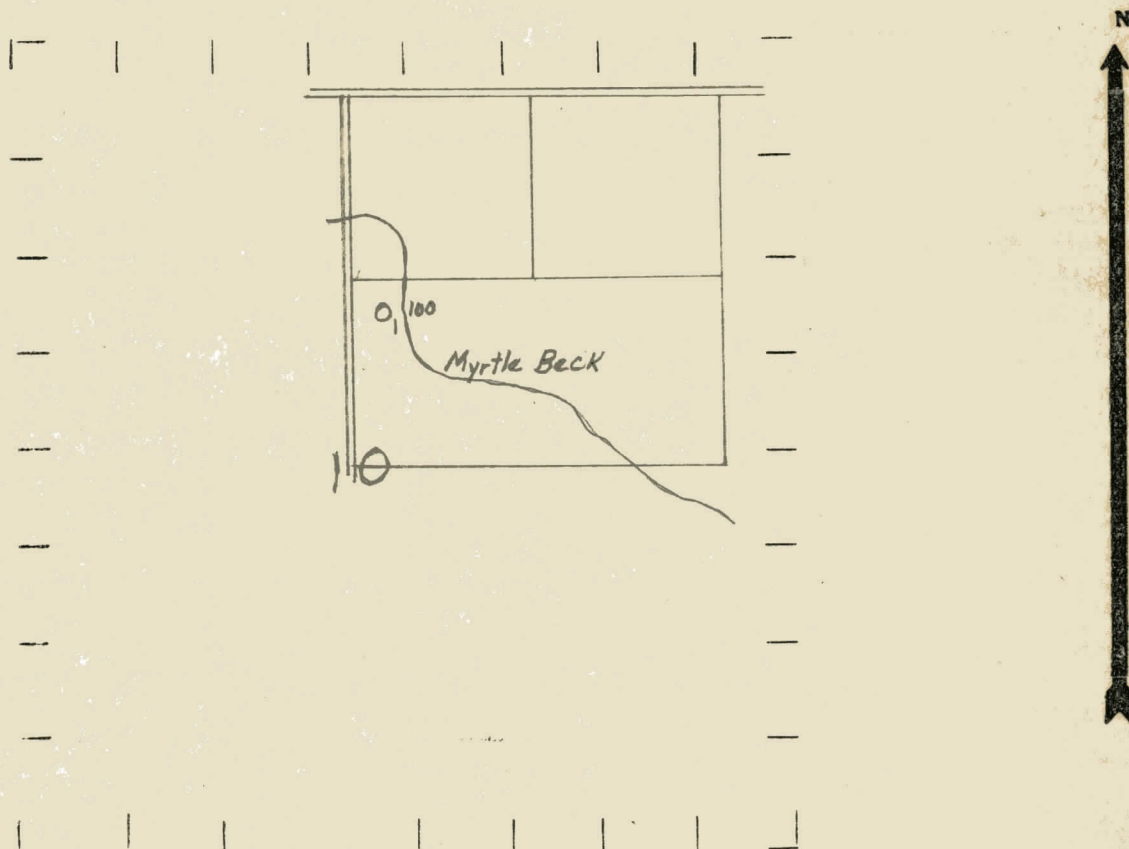
☉ DRY SHOWING GAS

☉ ABANDONED LOCATION

☼ ABANDONED GAS WELL

⦿ ABANDONED OIL WELL

NOTE: Below make tracing from map, (when no map is obtainable make sketch) showing farm, center of section, this location with measurements and also wells, dry holes, or other locations in the vicinity of this location.



REMARKS:

SIGNED

Superintendent or Foreman.

Michigan Producing Division

No. 100

Well No. 1 (Serial No.) 100 Farm Myrtle Beach Acres

Operator **Daily Crude Oil Company** Information secured ~~from~~ **Scouting Department** By

Date well started **2-23-58** Date well completed **11-18-58** Elevation **1067.4**

PRODUCTION RECORD

1st 24 hours natural Dry Hole

2nd 24 hours natural

Date of shot	No. of quarts	From	to	From	to
.....

Date of acid	No. of gallons
1911	10
1912	10
1913	10
1914	10
1915	10
1916	10
1917	10
1918	10
1919	10
1920	10
1921	10
1922	10
1923	10
1924	10
1925	10
1926	10
1927	10
1928	10
1929	10
1930	10
1931	10
1932	10
1933	10
1934	10
1935	10
1936	10
1937	10
1938	10
1939	10
1940	10
1941	10
1942	10
1943	10
1944	10
1945	10
1946	10
1947	10
1948	10
1949	10
1950	10
1951	10
1952	10
1953	10
1954	10
1955	10
1956	10
1957	10
1958	10
1959	10
1960	10
1961	10
1962	10
1963	10
1964	10
1965	10
1966	10
1967	10
1968	10
1969	10
1970	10
1971	10
1972	10
1973	10
1974	10
1975	10
1976	10
1977	10
1978	10
1979	10
1980	10
1981	10
1982	10
1983	10
1984	10
1985	10
1986	10
1987	10
1988	10
1989	10
1990	10
1991	10
1992	10
1993	10
1994	10
1995	10
1996	10
1997	10
1998	10
1999	10
2000	10
2001	10
2002	10
2003	10
2004	10
2005	10
2006	10
2007	10
2008	10
2009	10
2010	10
2011	10
2012	10
2013	10
2014	10
2015	10
2016	10
2017	10
2018	10
2019	10
2020	10
2021	10
2022	10
2023	10
2024	10
2025	10
2026	10
2027	10
2028	10
2029	10
2030	10
2031	10
2032	10
2033	10
2034	10
2035	10
2036	10
2037	10
2038	10
2039	10
2040	10
2041	10
2042	10
2043	10
2044	10
2045	10
2046	10
2047	10
2048	10
2049	10
2050	10
2051	10
2052	10
2053	10
2054	10
2055	10
2056	10
2057	10
2058	10
2059	10
2060	10
2061	10
2062	10
2063	10
2064	10
2065	10
2066	10
2067	10
2068	10
2069	10
2070	10
2071	10
2072	10
2	

shot
1st 24 hours after acid

2nd 24 hours after acid shot

FORMATION AND CASING RECORD

Formation	Top	Bottom	Top Pay	Bottom Pay	Remarks	Casing	
						Size	Set at
Strey	1435	S.L.M.		1501	Salt water	10"	640
Marshall	1545	"				8-1/4"	1080
Red Rock		1705				6-5/8"	1742
Antrim	2503					5-5/16"	3881
Traverse Line	3240	G.T.M.		3080	Salt water-3 bailers per hr.		
Dundee	3881	S.L.M.					
Monroe	3940	"	3951	3957	Salt water		
Total Depth		3957					

Remarks Hole full water 785' - show gas 1525'. 1578' C.T.M. equals 1578 S.L.M. - 3879' C.T.M. equals 3881' S.L.M.

Signed **D. C. Shackelford**