



Western Michigan University
ScholarWorks at WMU

Legacy Scout Tickets from Pure Oil Company

8-20-2021

**MGRRE_PureOilScoutTickets_Barlow, Percy
E_1_21035055270000**

MGRRE
Western Michigan University

Follow this and additional works at: <https://scholarworks.wmich.edu/pure>



Part of the Geology Commons

WMU ScholarWorks Citation

MGRRE, "MGRRE_PureOilScoutTickets_Barlow, Percy E_1_21035055270000" (2021). *Legacy Scout Tickets from Pure Oil Company*. 1127.
<https://scholarworks.wmich.edu/pure/1127>

This Document is brought to you for free and open access via ScholarWorks at WMU. It has been accepted for inclusion in Legacy Scout Tickets from Pure Oil Company by an authorized administrator of ScholarWorks at WMU. See the National Digital Catalogue - Science Base Catalogue for more collections submitted by MGRRE.



MGRRE_PureOilScoutTickets_Barlow, Percy E_1_21035055270000

API 21035055270000

Permit Number 5527

Lease Name Barlow, Percy E

Well Number 1

County Clare

Township 18N

Range 06W

Section 3

2021 DEQ or Pure co_name Sohio Petroleum Company

Pure Number 117

Latitude 43.97936

Longitude -85.01467

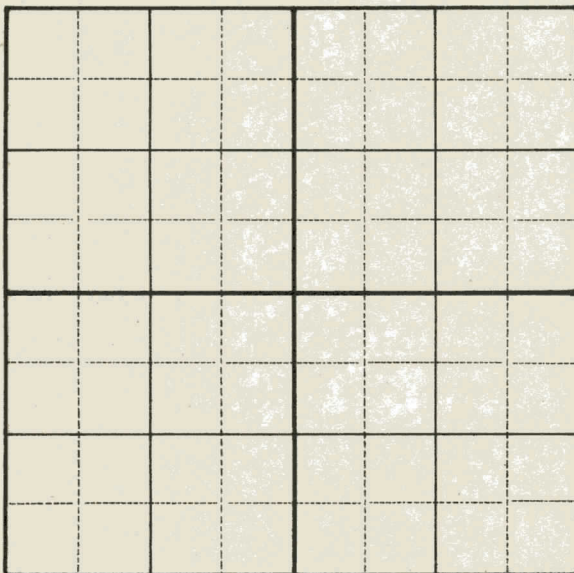
WELL REPORT - OUTSIDE OPERATIONS

SERIAL NO. 117STATE Michigan ~~ESK~~ CO. ClareOPERATOR Sohio Petroleum Co.FARM Percy E. Barlow WELL NO. 1TWP. Freeman S. 3 T. 18N R. 6WLOC. NE NW SEWILDCAT ☐ FIELD ☒ FIELD NAME Freeman - Redding

MAP NO. _____ CO-ORD. _____ ELEV. _____

STATUS Plugged and Abandoned 3-12-52Total Depth 3899'

NORTH

DATE 5-7-52 SCOUT DRS

THE PURE OIL COMPANY

October 31, 1946

Date December 4, 1946 Corrected LOCATION REPORT

A.F.E. No. _____

Division Mich. Producing District _____ Lease Percy E. Barlow

Acres _____ Lease No. _____ Elevation _____ Well No. 1 (Serial No. 117)

Quadrangle NE NW SE Sec. 3 Twp. 18 N Rge. 6 W Twp. Freeman

Survey _____ County Clare State Michigan

Operator Sohio Petroleum Company Map Freeman Township, Clare County

Feet from North Line of Lease

" " East " " "

" " South " " "

" " West " " "

Feet from North Line of Section

" " East " " "

" " South " " "

" " West " " "

LEGEND

○ Location

☀ Gas Well

● Oil Well

☀ Gas - Distillate Well

○ or ○ Dry Hole

● Dry Showing Oil

☀ Dry Showing Gas

⊗ Abandoned Location

☀ or ☀ Abandoned Gas Well

● or ● Abandoned Oil Well

⊗ or ⊗ Input Well

See plat - Clare #117.

N

Remarks: Change of operator.

Scale _____

Submitted by Scouting Dept.

~~XXXX Engineer~~

Approved by _____

Division Manager

Approved by _____

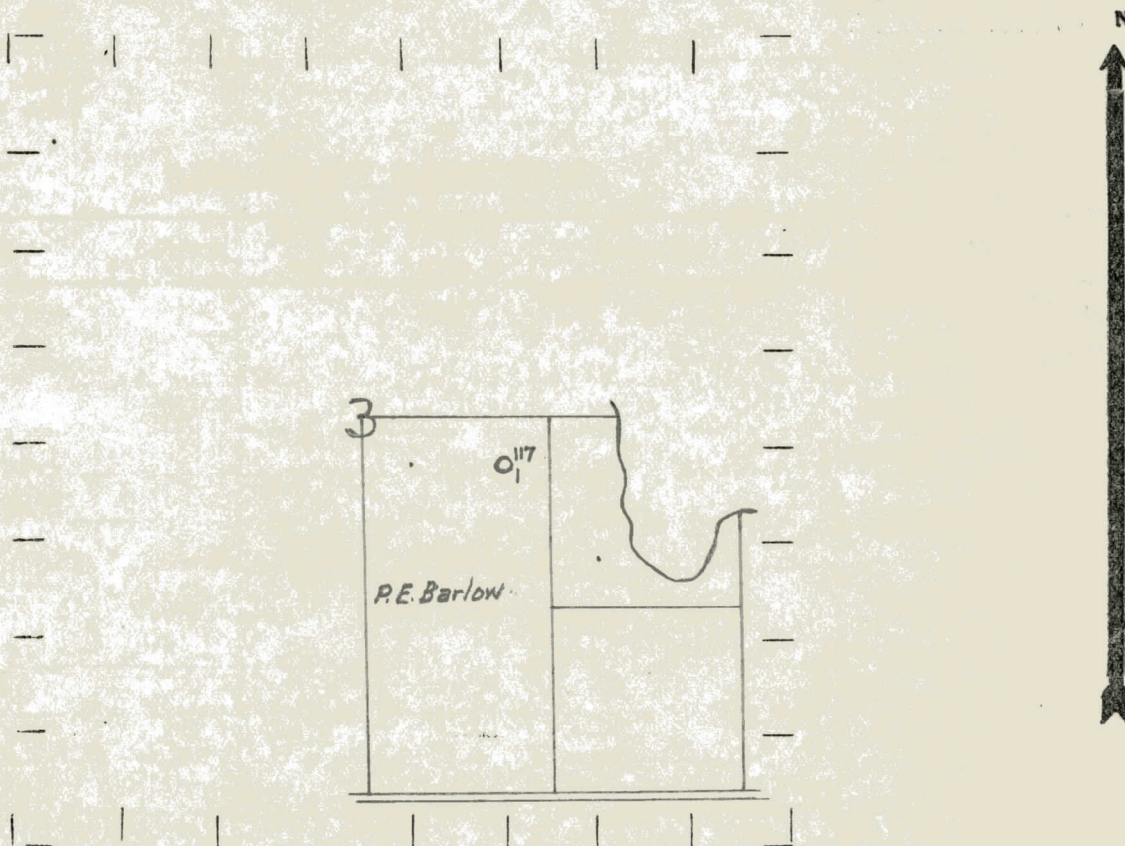
Vice-President - General Manager

Division Michigan District Clare Office Bellevue
Date December 1st 1938 Collected LOCATION REPORT No. 111
DATE October 31, 1938 LOCATION REPORT
STATE Michigan COUNTY Clare DIST. Freeman SEC. 3 TOWN 18 N RANGE 6 W
WELL No. 1 (SERIAL No. 117) FARM Percy E. Barlow ACRES
NAME OF STREAM OR WATERS _____ QUADRANGLE NE-NW-SE

OPERATOR C. L. Maguire, Inc. Map Freeman Township, Clare County
33330 C. L. Maguire
Feet from North Line of Farm
33350 " " East " " "
" " South " " "
" " West " " "
330330 Feet from North Line of Section
" " East " " "
" " South " " "
990990 " " West 1/4 " "

LEGEND
○ LOCATION
① RIG
⊕ DRILLING
☀ GAS WELL
● OIL WELL
⬮ SMALL OIL WELL
⊖ DRY HOLE
⬮ DRY SHOWING OIL
⊖ DRY SHOWING GAS
⊖ ABANDONED LOCATION
☀ ABANDONED GAS WELL
⬮ ABANDONED OIL WELL

NOTE: Below make tracing from map, (when no map is obtainable make sketch) showing farm, center of section, this location with measurements and also wells, dry holes, or other locations in the vicinity of this location.



REMARKS:

SIGNED

R. L. J.

Superintendent or Foreman

Signed D. C. Shackelford