



Western Michigan University
ScholarWorks at WMU

Legacy Scout Tickets from Pure Oil Company

8-20-2021

MGRRE_PureOilScoutTickets_Doherty, Sara M et
al_1_21035056490000

MGRRE
Western Michigan University

Follow this and additional works at: <https://scholarworks.wmich.edu/pure>



Part of the Geology Commons

WMU ScholarWorks Citation

MGRRE, "MGRRE_PureOilScoutTickets_Doherty, Sara M et al_1_21035056490000" (2021). *Legacy Scout Tickets from Pure Oil Company*. 1145.
<https://scholarworks.wmich.edu/pure/1145>

This Document is brought to you for free and open access via ScholarWorks at WMU. It has been accepted for inclusion in Legacy Scout Tickets from Pure Oil Company by an authorized administrator of ScholarWorks at WMU. See the National Digital Catalogue - Science Base Catalogue for more collections submitted by MGRRE.



MGRRE_PureOilScoutTickets_Doherty, Sara M et al_1_21035056490000

API 21035056490000

Permit Number 5649

Lease Name Doherty, Sara M et al

Well Number 1

County Clare

Township 17N

Range 04W

Section 25

2021 DEQ or Pure co_name Michigan Consolidated Gas Company

Pure Number 147

Latitude 43.83121

Longitude -84.74588

SERIAL NO. **TH 147**

STATE Michigan ~~POW~~ CO Clare

OPERATOR Michigan Consolidated Gas Co.

FARM Sarah M. Doherty, et al WELL NO. 1

TWP. **Grant** S 25 T 17N R 4W

LOC. C SW SW

WILDCAT ☐ FIELD ☐ FIELD NAME

MAP NO. _____ CO-ORD. _____ ELEV _____

STATUS Plugged and abandoned - 5-5-55

Total Depth - 1300')

NORTH

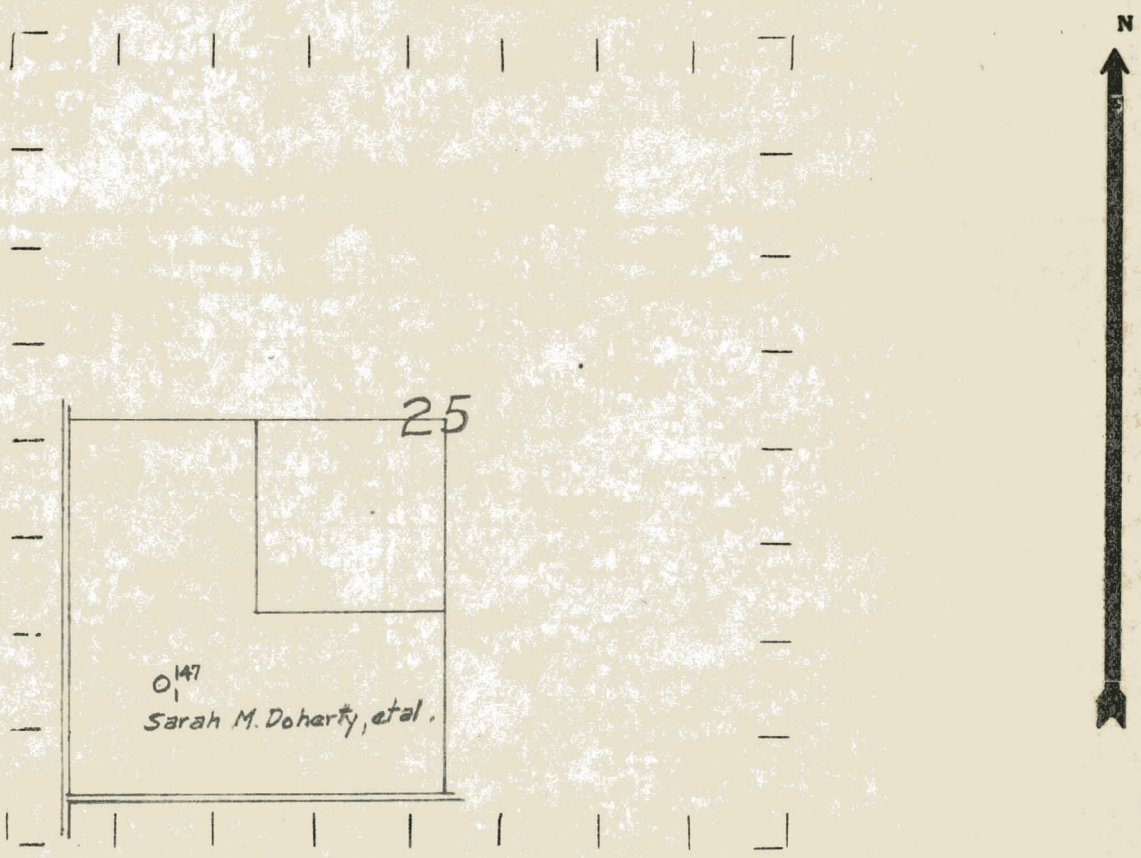
A full-page view of a blank sheet of graph paper. The grid consists of solid black lines forming large squares, with dashed black lines further subdividing each large square into four smaller ones. The paper has a slightly textured appearance.

DATE 7-1-55 SCOUT JEC

STATE Michigan COUNTY Clare DIST. Grant SEC. 25 TOWN 17 N RANGE 4 W
 WELL No. 1 (SERIAL No. 147) FARM Sarah M. Doherty, et al. ACRES
 NAME OF STREAM OR WATERS _____ QUADRANGLE C SW SW
 OPERATOR American Production Company Map Grant Township, Clare County
American Prod Co.
 _____ Feet from North Line of Farm
 _____ " " East " " "
660 660 " " South " " "
660 660 " " West " " "
 _____ Feet from North Line of Section
 _____ " " East " " "
660 660 " " South " " "
660 660 " " West " " "

- LEGEND**
- LOCATION
 - ① RIG
 - ⊕ DRILLING
 - ☀ GAS WELL
 - OIL WELL
 - ⦿ SMALL OIL WELL
 - ⊙ DRY HOLE
 - ⦿ DRY SHOWING OIL
 - ⊙ DRY SHOWING GAS
 - ⦿ ABANDONED LOCATION
 - ☀ ABANDONED GAS WELL
 - ⦿ ABANDONED OIL WELL

NOTE: Below make tracing from map, (when no map is obtainable make sketch) showing farm, center of section, this location with measurements and also wells, dry holes, or other locations in the vicinity of this location.



REMARKS:

SIGNED _____

Superintendent or Foreman.

Signed D. C. Shackelford