



Western Michigan University
ScholarWorks at WMU

Legacy Scout Tickets from Pure Oil Company

8-20-2021

**MGRRE_PureOilScoutTickets_Clare County
State_2_21035058990000**

MGRRE
Western Michigan University

Follow this and additional works at: <https://scholarworks.wmich.edu/pure>



Part of the Geology Commons

WMU ScholarWorks Citation

MGRRE, "MGRRE_PureOilScoutTickets_Clare County State_2_21035058990000" (2021). *Legacy Scout Tickets from Pure Oil Company*. 1165.
<https://scholarworks.wmich.edu/pure/1165>

This Document is brought to you for free and open access via ScholarWorks at WMU. It has been accepted for inclusion in Legacy Scout Tickets from Pure Oil Company by an authorized administrator of ScholarWorks at WMU. See the National Digital Catalogue - Science Base Catalogue for more collections submitted by MGRRE.



MGRRE_PureOilScoutTickets_Clare County State_2_21035058990000

API 21035058990000

Permit Number 5899

Lease Name Clare County State

Well Number 2

County Clare

Township 19N

Range 06W

Section 33

2021 DEQ or Pure co_name Collin, C. W.

Pure Number 178

Latitude 43.99398

Longitude -85.04464

THE PURE OIL COMPANY

WELL REPORT—OUTSIDE OPERATIONS

SERIAL NO. 178

STATE Michigan ~~PSHX~~ CO. Clare

OPERATOR C. W. Collin

FARM Clare - State WELL NO. 2

TWP. Redding S. 33 T. 19N R. 6W
~~SURVEY~~

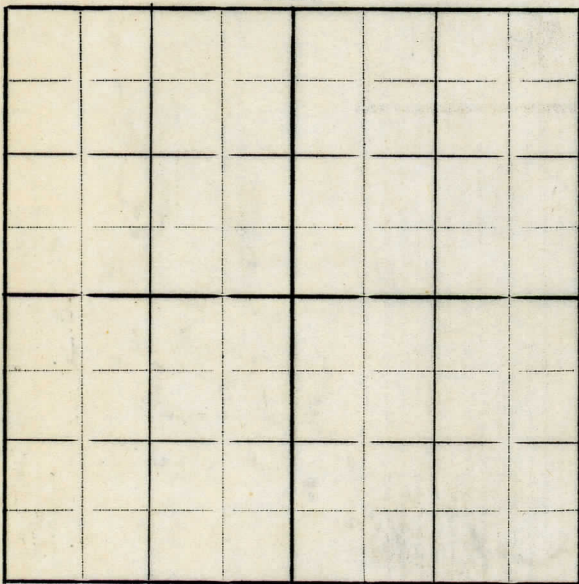
LOC. NE NW SW

MAP NO. CO-ORD. ELEV.

STATUS Plugged and Abandoned 9-4-47

Total Depth 3887'

NORTH



DATE 10-22-47 SCOUT H.J.G.

THE PURE OIL COMPANY
LOCATION REPORT

DATE March 9, 1939
January 2, 1947 Corrected

A.F.E. No. No. 178

Division Mich. Producing District _____ Lease Clare - State _____

Acres _____ Lease No. _____ Elevation _____ Well No. 2 (Serial No. 178)

Quadrangle NE NW SW Sec. 33 Twp. 19 N Rge. 6 W Twp. Redding

Survey _____ County Clare State Michigan

Operator C. W. Collin Map Redding Township, Clare County

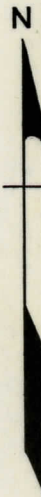
____ Feet from North Line of Lease
____ " " East " " "
____ " " South " " "
____ " " West " " "
____ Feet from North Line of Section
____ " " East " " "
____ " " South " " "
____ " " West " " "

LEGEND

- Location
- ☼ Gas Well
- Oil Well
- ☼ Gas - Distillate Well
- or ○ Dry Hole
- Dry Showing Oil
- ☼ Dry Showing Gas
- ⊗ Abandoned Location
- ☼ or ☼ Abandoned Gas Well
- or ● Abandoned Oil Well
- or ○ Input Well

9-4-47

See plat - Clare No. 178.



Remarks: Change of operator. Scale _____

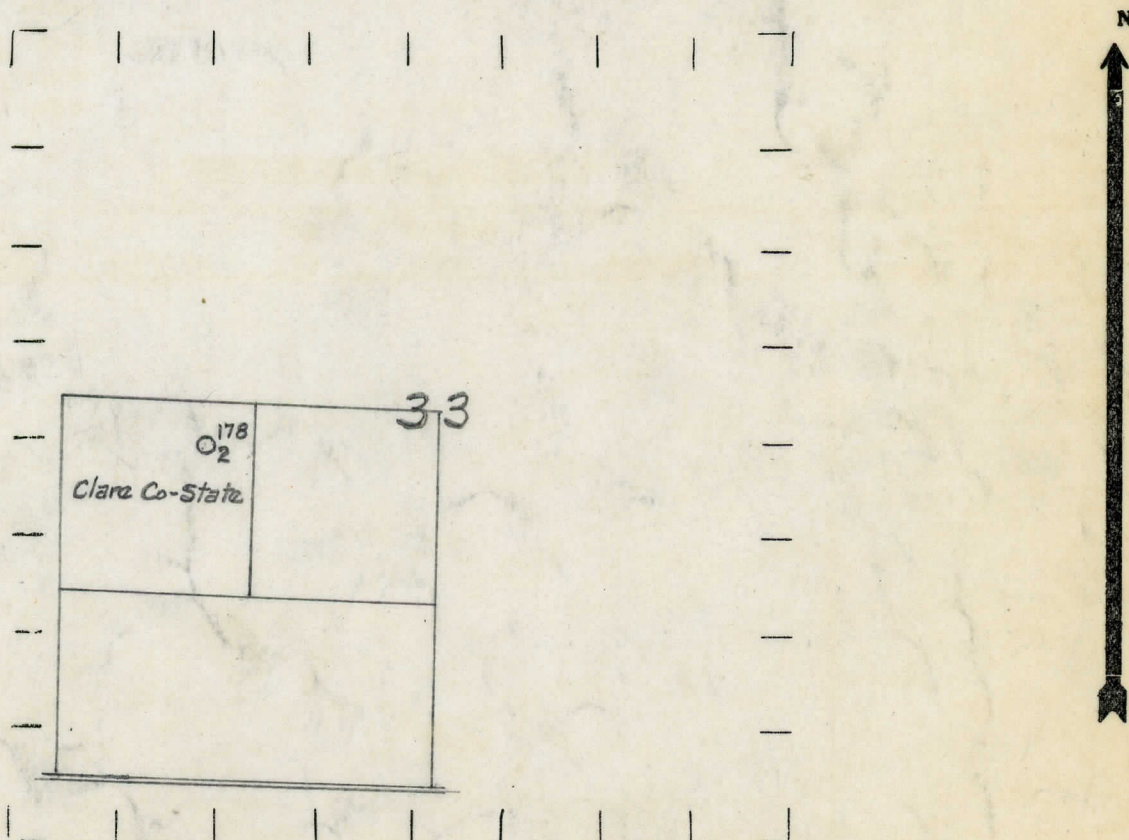
Submitted by Scouting Dept. Approved by _____ Division Manager

Approved by _____ Vice-President - General Manager

Division Michigan District Clare State Michigan
Date March 1, 1939 Location Redding Twp. Redding Sec. 33 Town 19 N Range 6 W
WELL No. 2 (SERIAL No. 178) FARM Clare Co. State ACRES
NAME OF STREAM OR WATERS _____ QUADRANGLE NE NW SW

OPERATOR McClanahan Oil Company Map Redding Township, Clare County
330 330 McClanahan Oil Co. Feet from North Line of Farm
330 330 " " East " " "
" " South " " "
" " West " " "
330 330 Feet from North Line of Section
" " East " " "
" " South " " "
990 990 " " West " " "
41.2
Sp 3-1-39
14" 297
LEGEND
○ LOCATION
⊕ RIG
⊕ DRILLING
⊕ GAS WELL
● OIL WELL
● SMALL OIL WELL
⊕ DRY HOLE
⊕ DRY SHOWING OIL
⊕ DRY SHOWING GAS
⊕ ABANDONED LOCATION
⊕ ABANDONED GAS WELL
⊕ ABANDONED OIL WELL

NOTE: Below make tracing from map, (when no map is obtainable make sketch) showing farm, center of section, this location with measurements and also wells, dry holes, or other locations in the vicinity of this location.



REMARKS:

SIGNED

Superintendent or Foreman.

Signed **D. C. Shackelford**