



Western Michigan University
ScholarWorks at WMU

Legacy Scout Tickets from Pure Oil Company

8-20-2021

**MGRRE_PureOilScoutTickets_Barlow, Percy
E_3_21035062900000**

MGRRE
Western Michigan University

Follow this and additional works at: <https://scholarworks.wmich.edu/pure>



Part of the Geology Commons

WMU ScholarWorks Citation

MGRRE, "MGRRE_PureOilScoutTickets_Barlow, Percy E_3_21035062900000" (2021). *Legacy Scout Tickets from Pure Oil Company*. 1179.
<https://scholarworks.wmich.edu/pure/1179>

This Document is brought to you for free and open access via ScholarWorks at WMU. It has been accepted for inclusion in Legacy Scout Tickets from Pure Oil Company by an authorized administrator of ScholarWorks at WMU. See the National Digital Catalogue - Science Base Catalogue for more collections submitted by MGRRE.



MGRRE_PureOilScoutTickets_Barlow, Percy E_3_21035062900000

API 21035062900000

Permit Number 6290

Lease Name Barlow, Percy E

Well Number 3

County Clare

Township 18N

Range 06W

Section 3

2021 DEQ or Pure co_name Sohio Petroleum Company

Pure Number 200

Latitude 43.97754

Longitude -85.01594

Form 216-F WELL REPORT - OUTSIDE OPERATIONS

SERIAL NO. 200

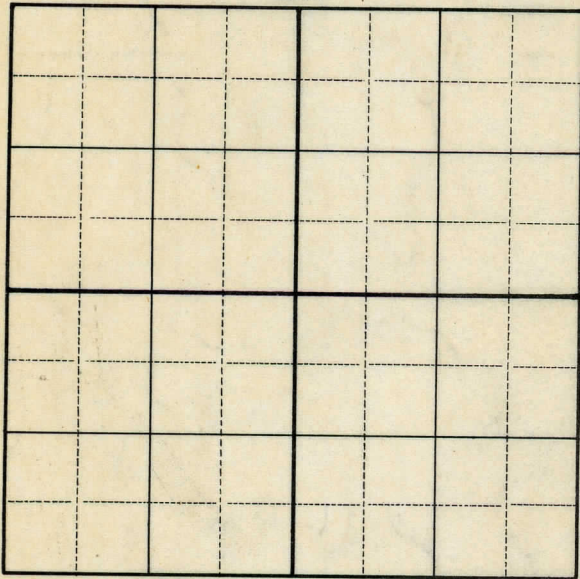
STATE Michigan ~~DELA~~ Clare
CO. Clare
OPERATOR Sohio Petroleum Company
FARM Percy E. Barlow WELL NO. 3
TWP. Freeman S. 3 T. 18N R. 6W
~~SURVEY~~
LOC. C S $\frac{1}{2}$ NW SE

WILDCAT ☐ FIELD ☐ FIELD NAME _____

MAP NO. _____ CO-ORD. _____ ELEV. _____

STATUS Plugged and Abandoned 11-2-50
Total Depth 3907 $\frac{1}{2}$ '.

NORTH

DATE 12-20-50 SCOUT H. J. G.

THE PURE OIL COMPANY

Date December 4, 1946

LOCATION REPORT

A.F.E. No. _____

Division Mich. Producing District _____ Lease Percy E. Barlow

Acres _____ Lease No. _____ Elevation _____ Well No. 3 (Serial No. 200)

Quadrangle C S¹/₂ NW SE Sec. 3 Twp. 18 N Rge. 6 W Dist. Freeman

Survey _____ County Clare State Michigan

Operator Sohio Petroleum Company Map Freeman Township, Clare County

Feet from North Line of Lease

— “ “ East “ “ “

“ “ South “ “ “

“ “ West “ “ “

Feet from North Line of Section


“ “ East “ “ “

“ “ South “ “ “


“ “ West “ “ “



LEGEND

☐ Location

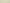
 **Gas Well**

● Oil Well



 Gas — Distillate Well

 or  Dry Hole

● Dry Showing Oil

 Dry Showing Gas

 Abandoned Location

 or  **Abandoned Gas Well**

● or ● Abandoned Oil Well

● or ○ Input Well

See plat - Clare #200.

N

Remarks: Change of operator.

Scale_____

Submitted by Scouting Dept.

City Engineers

Approved by _____

Approved by _____

Vice-President – General Manager

Date

December 7th 1939

LOCATION REPORT

V.E.E. No.

DATE June 8, 1939

LOCATION REPORT

No. 200

STATE Michigan

COUNTY

Clare

DIST

Freeman

TWP.

SEC.

3

TOWN

18 N

RANGE

6 W

WELL No. 33

(SERIAL No. 200) FARM

PREC.

P. E. Barlow

ACRES

NAME OF STREAM OR WATERS

QUADRANGLE

51-44-SE

OPERATOR

C. L. Maguire, Inc.

Map

Freeman Township, Clare County

Freeman - Clare

99090

C. L. Maguire, Inc.

Feet from North Line of Farm

660660

" " East " " "

" " South " " "

660660

" " West " " "

990990

Feet from North Line of Section

" " East " " "

" " South " " "

660660

" " West " 1/4 "

LEGEND

O LOCATION

① RIG

⊕ DRILLING

☀ GAS WELL

● OIL WELL

● SMALL OIL WELL

⊙ DRY HOLE

⊙ DRY SHOWING OIL

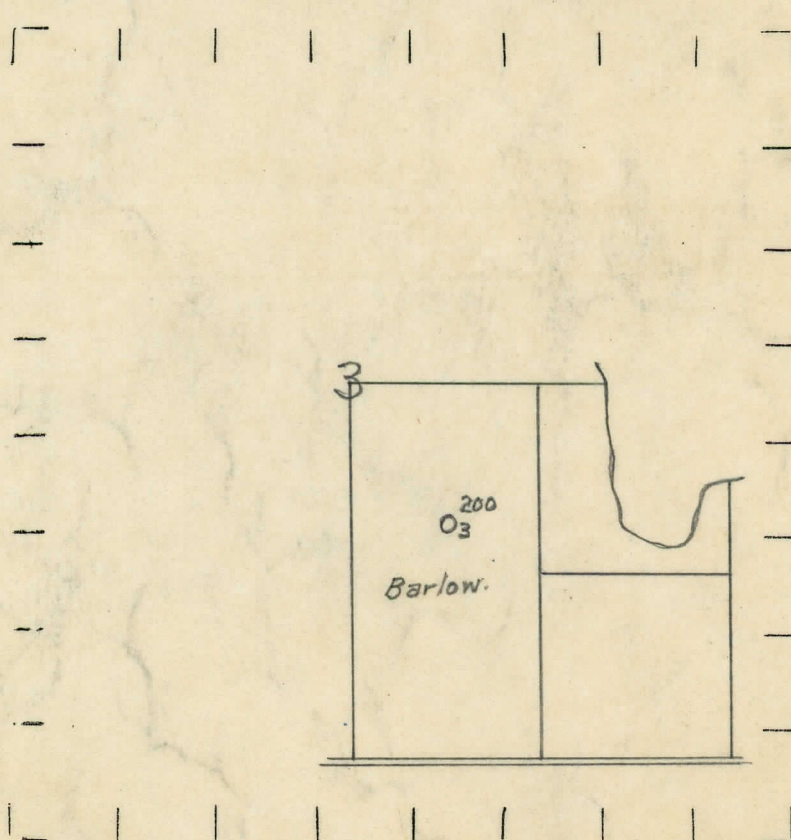
⊙ DRY SHOWING GAS

⊙ ABANDONED LOCATION

☀ ABANDONED GAS WELL

● ABANDONED OIL WELL

NOTE: Below make tracing from map, (when no map is obtainable make sketch) showing farm, center of section, this location with measurements and also wells, dry holes, or other locations in the vicinity of this location.



REMARKS:

SIGNED

R. L. Yeager

Superintendent or Foreman.

D. C. Shackelford