



Western Michigan University
ScholarWorks at WMU

Legacy Scout Tickets from Pure Oil Company

8-20-2021

MGRRE_PureOilScoutTickets_Entriken & Gilmore_9_21035064230000

MGRRE

Western Michigan University

Follow this and additional works at: <https://scholarworks.wmich.edu/pure>



Part of the Geology Commons

WMU ScholarWorks Citation

MGRRE, "MGRRE_PureOilScoutTickets_Entriken & Gilmore_9_21035064230000" (2021). *Legacy Scout Tickets from Pure Oil Company*. 1189.

<https://scholarworks.wmich.edu/pure/1189>

This Document is brought to you for free and open access via ScholarWorks at WMU. It has been accepted for inclusion in Legacy Scout Tickets from Pure Oil Company by an authorized administrator of ScholarWorks at WMU. See the National Digital Catalogue - Science Base Catalogue for more collections submitted by MGRRE.



MGRRE_PureOilScoutTickets_Entriken & Gilmore_9_21035064230000

API 21035064230000

Permit Number 6423

Lease Name Entriken & Gilmore

Well Number 9

County Clare

Township 18N

Range 06W

Section 14

2021 DEQ or Pure co_name Mid Michigan Gas Storage Company

Pure Number 211

Latitude 43.9474024

Longitude -84.9942111

WELL REPORT - OUTSIDE OPERATIONS

THE PURE O

SERIAL NO. 211

STATE Michigan CO. Clare

OPERATOR Michigan Consolidated Gas Co.

FARM Entriken-Gilmore WELL NO. 9

TWP. ~~SURVEY~~ Freeman S. 14 T. 18N R. 6W

LOC. C SE

WILDCAT ☐ FIELD ☐ FIELD NAME

MAP NO. CO-ORD. ELEV.

STATUS To be used for gas storage

Operator's name corrected from:
Taggart Bros. Gas Co.

NORTH

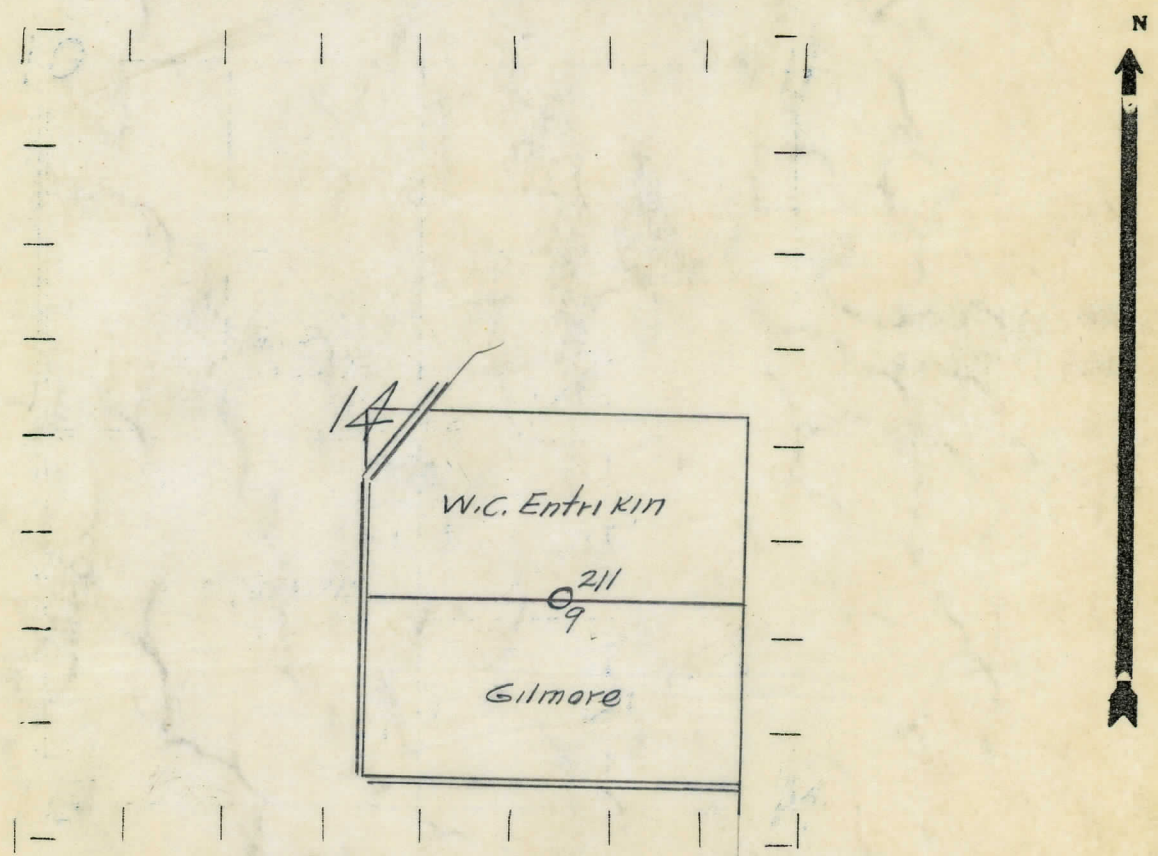
DATE 3-8-54 SCOUT JEC

OBSERVATION Michigan Consolidated Gas Co.
 STATE Michigan COUNTY Clare DIST. Freeman SEC. 14 TOWN 18 N RANGE 6 W
 DATE July 7, 1939 LOCATION REPORT No. 211
 WELL No. 9 (SERIAL No. 211) FARM Entriken-Gilmore ACRES
 NAME OF STREAM OR WATERS _____ QUADRANGLE C-SE 1/4
 OPERATOR Taggart Brothers, Inc. Map Freeman Township, Clare County

_____ Feet from North Line of Farm
1320 1320 " " East " " "
1320 1320 " " South " " "
 " " West " " "
1320 1320 Feet from North Line of 1/4 Section
 " " East " " "
 " " South " " "
1320 1320 " " West " 1/4 "

- LEGEND
- LOCATION
 - ⊙ RIG
 - ⊕ DRILLING
 - ☀ GAS WELL
 - OIL WELL
 - ⬮ SMALL OIL WELL
 - ⊙ DRY HOLE
 - ⬮ DRY SHOWING OIL
 - ⊙ DRY SHOWING GAS
 - ⬮ ABANDONED LOCATION
 - ☀ ABANDONED GAS WELL
 - ⬮ ABANDONED OIL WELL

NOTE: Below make tracing from map, (when no map is obtainable make sketch) showing farm, center of section, this location with measurements and also wells, dry holes, or other locations in the vicinity of this location.



REMARKS: _____

 SIGNED _____
 Superintendent or Foreman.

Signed **D. C. Shackelford**