



Western Michigan University
ScholarWorks at WMU

Legacy Scout Tickets from Pure Oil Company

8-20-2021

**MGRRE_PureOilScoutTickets_Beard, McIntyre,
Green_31_21035078170000**

MGRRE

Western Michigan University

Follow this and additional works at: <https://scholarworks.wmich.edu/pure>



Part of the Geology Commons

WMU ScholarWorks Citation

MGRRE, "MGRRE_PureOilScoutTickets_Beard, McIntyre, Green_31_21035078170000" (2021). *Legacy Scout Tickets from Pure Oil Company*. 1254.
<https://scholarworks.wmich.edu/pure/1254>

This Document is brought to you for free and open access via ScholarWorks at WMU. It has been accepted for inclusion in Legacy Scout Tickets from Pure Oil Company by an authorized administrator of ScholarWorks at WMU. See the National Digital Catalogue - Science Base Catalogue for more collections submitted by MGRRE.



MGRRE_PureOilScoutTickets_Beard, McIntyre, Green_31_21035078170000

API 21035078170000

Permit Number 7817

Lease Name Beard, McIntyre, Green

Well Number 31

County Clare

Township 18N

Range 06W

Section 11

2021 DEQ or Pure co_name Mid Michigan Gas Storage Company

Pure Number 312

Latitude 43.9693434

Longitude -85.0032159

THE PURE OIL COMPANY
COMPLETION RECORD OF LOCATION REPORT OTHER OPERATORS

DATE July 10, 1940

No. 312

STATE Mich. COUNTY Clare DIST. Freeman TWP. Freeman SEC. 11 TOWN 1818N RANGE 6W

WELL No. 31 (SERIAL No. 312) FARM Beard-McIntyre-Green-Green ACRES

NAME OF STREAM OR WATERS QUADRANGLE CNW

OPERATOR Taggart Bros., Inc. Map Freeman Township, Clare County
19999art Brothers Inc Freeman-Clare

Feet from North Line of Farm

1320 1320 " " East " " "

1320 1320 " " South " " "

" " West " " "

1320 1320 Feet from North Line of Section 1/4 1/4

" " East " " "

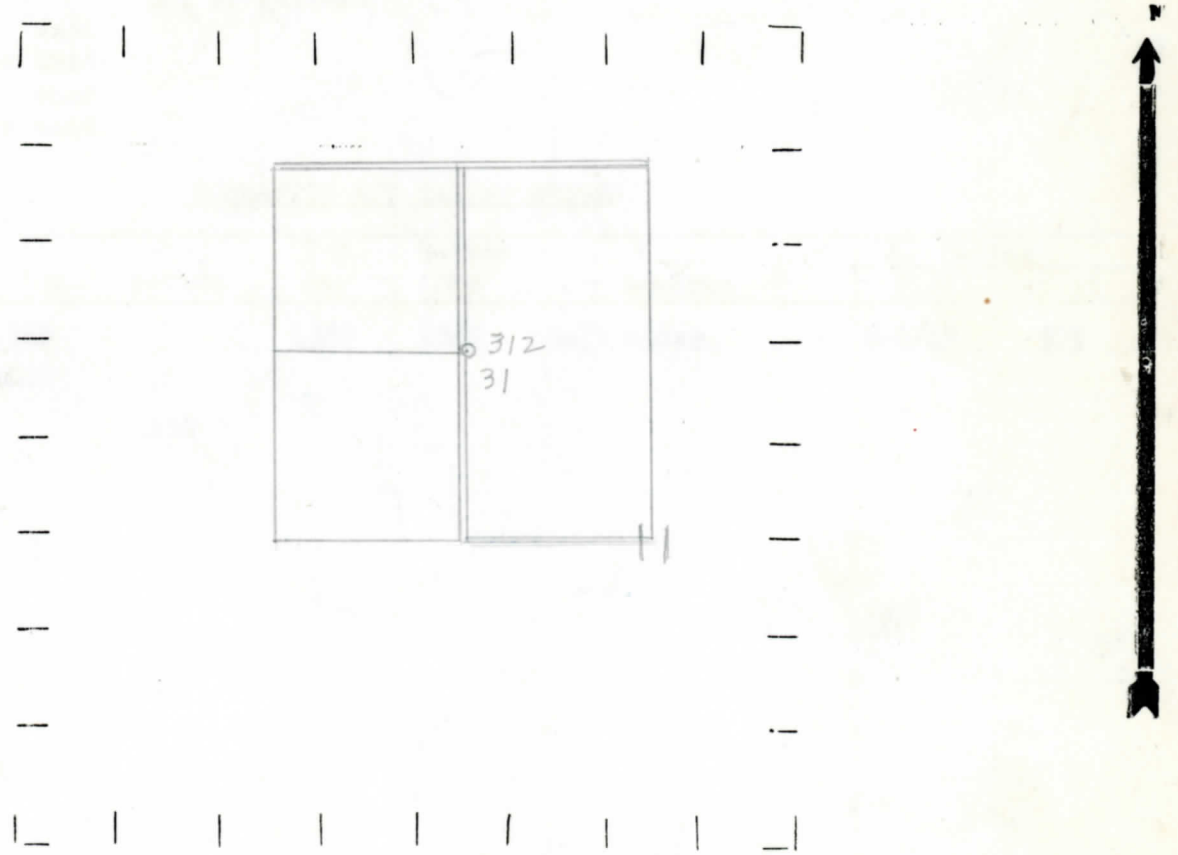
" " South " " "

1320 1320 " " West " " "

Handwritten notes: *220*
ly 7-8-40

- LEGEND**
- LOCATION
 - ⊕ RIG
 - ⊕ DRILLING
 - ☀ GAS WELL
 - OIL WELL
 - SMALL OIL WELL
 - ⊕ DRY HOLE
 - DRY SHOWING OIL
 - ☀ DRY SHOWING GAS
 - ⊕ ABANDONED LOCATION
 - ☀ ABANDONED GAS WELL
 - ABANDONED OIL WELL

NOTE: Below make tracing from map. (when no map is obtainable make sketch) showing farm, center of section, this location with measurements and also wells, dry holes, or other locations in the vicinity of this location.



REMARKS:

SIGNED

W
Superintendent or Foreman.

Michigan Producing Division

Date July 17, 1940 No. 312
 State Mich. County Clare ~~Dist.~~ Twp. Freeman Sec. 11 Twp. 18 N Rge. 6 W
 Well No. 31 (Serial No.) 312 Farm Beard-McIntyre-Green Acres _____
 Operator Taggart Brothers, Inc. Information secured ~~from~~ Scouting Department By _____
 Date well started 7-8-40 Dated well completed 7-12-40 Elevation 1125.5

PRODUCTION RECORD

1st 24 hours natural Dry Hole
 2nd 24 hours natural _____
 Date of shot _____ No. of quarts _____ From _____ to _____ From _____ to _____
 Date of acid _____ No. of gallons _____
 1st 24 hours after acid shot _____
 2nd 24 hours after acid shot _____

FORMATION AND CASING RECORD

Formation	Top	Bottom	Top Pay	Bottom Pay	Remarks	Casing	
						Size	Set at
Stray	1552		1560	1569	Salt water.	8-1/4"	505
Marshall	1620						
Total Depth		1650					

Remarks _____

Signed D. C. Shackelford