



Western Michigan University
ScholarWorks at WMU

Legacy Scout Tickets from Pure Oil Company

8-20-2021

**MGRRE_PureOilScoutTickets_McGregor, Fisk R et
a_1_21035079220000**

MGRRE
Western Michigan University

Follow this and additional works at: <https://scholarworks.wmich.edu/pure>



Part of the Geology Commons

WMU ScholarWorks Citation

MGRRE, "MGRRE_PureOilScoutTickets_McGregor, Fisk R et a_1_21035079220000" (2021). *Legacy Scout Tickets from Pure Oil Company*. 1261.
<https://scholarworks.wmich.edu/pure/1261>

This Document is brought to you for free and open access via ScholarWorks at WMU. It has been accepted for inclusion in Legacy Scout Tickets from Pure Oil Company by an authorized administrator of ScholarWorks at WMU. See the National Digital Catalogue - Science Base Catalogue for more collections submitted by MGRRE.



MGRRE_PureOilScoutTickets_McGregor, Fisk R et al_1_21035079220000

API 21035079220000

Permit Number 7922

Lease Name McGregor, Fisk R et al

Well Number 1

County Clare

Township 19N

Range 03W

Section 15

2021 DEQ or Pure co_name Oryx Energy Company

Pure Number 319

Latitude 44.03313

Longitude -84.64907

THE PURE OIL COMPANY

DATE August 21, 1940

LOCATION REPORT

No.

319 ✓

STATE Michigan COUNTY Clare TWP. Hamilton SEC. 15 TOWN 19 N RANGE 3 W

WELL No. 1 (SERIAL No. 319) FARM Fisk R. McGregor, et al ACRES

NAME OF STREAM OR WATERS QUADRANGLE C S 2 SE SE

OPERATOR Sun Oil Company Map Hamilton Township, Clare County

Feet from North Line of Farm
660 660 East
330 330 South
West

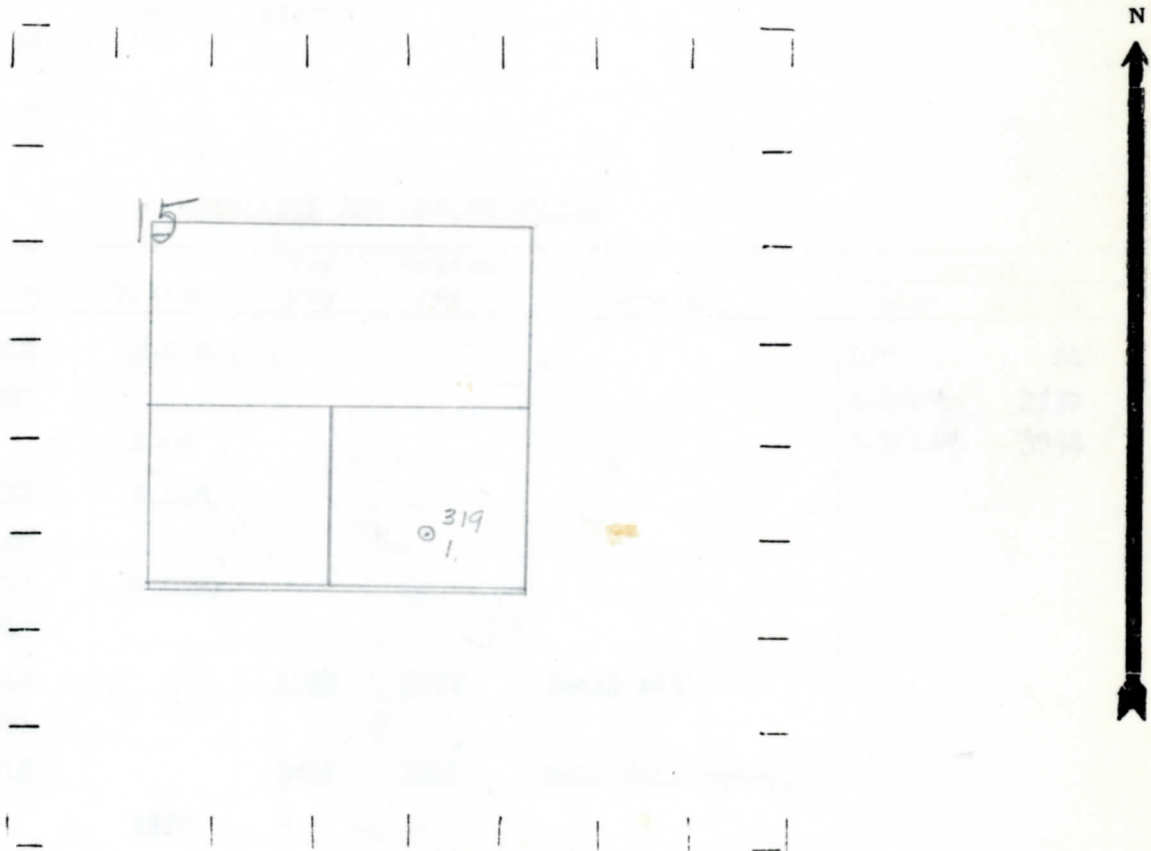
Feet from North Line of Section
660 660 East 1/4
330 330 South
West

Hamilton - Clare
660 was a 10'
by 8-19-40

LEGEND

- LOCATION, RIG, DRILLING, GAS WELL, OIL WELL, SMALL OIL WELL, DRY HOLE, DRY SHOWING OIL, DRY SHOWING GAS, ABANDONED LOCATION, ABANDONED GAS WELL, ABANDONED OIL WELL

NOTE: Below make tracing from map, (when no map is obtainable make sketch) showing farm, center of section, this location with measurements and also wells, dry holes, or other locations in the vicinity of this location.



REMARKS:

SIGNED

w

Superintendent or Foreman.

Michigan Producing Division

Date **September 25, 1940** No. **319**
 State **Mich.** County **Clare** ~~Index~~ Twp. **Hamilton** Sec. **15** Twp. **19 N** Rge. **3 W**
 Well No. **1** (~~319~~) **319** Farm **F. R. McGregor, et al** Acres _____
 Operator **Sun Oil Company** Information secured ~~from~~ **By Scouting Department**
 Date well started **8-19-40** Dated well completed **9-19-40** Elevation **910.3**

PRODUCTION RECORD

1st 24 hours natural **Dry Hole**
 2nd 24 hours natural _____
 Date of shot _____ No. of quarts _____ From _____ to _____ From _____ to _____
 Date of acid _____ No. of gallons _____
 1st 24 hours after acid shot _____
 2nd 24 hours after acid shot _____

FORMATION AND CASING RECORD

| Formation | Top | Bottom | Top Pay | Bottom Pay | Remarks | Casing | |
|----------------|------|--------|---------|------------|------------------|---------|--------|
| | | | | | | Size | Set at |
| Stray | 1212 | S.L.M. | | | | 10" | 64 |
| Marshall | 1287 | | | | | 6-5/8" | 1530 |
| Red Rock | | 1506 | | | | 5-3/16" | 3762 |
| Sunbury | 2451 | S.L.M. | | | | | |
| Berea | 2480 | | | | | | |
| Antrim | 2503 | S.L.M. | | | | | |
| Traverse Form. | 3027 | | | | | | |
| Traverse Lime | 3046 | | 3163 | 3177 | Smell oil. | | |
| Dundee | 3761 | | | | | | |
| Monroe | 3810 | | 3823 | 3827 | Hole full water. | | |
| Total Depth | | 3827 | | | | | |

Remarks **2505' C.T.M. equals 2512' S.L.M.; 3735' C.T.M. equals 3737' S.L.M.**

Signed **D. C. Shackelford**