



Western Michigan University
ScholarWorks at WMU

Legacy Scout Tickets from Pure Oil Company

8-20-2021

MGRRE_PureOilScoutTickets_Felthouse_1_21035088730000

MGRRE

Western Michigan University

Follow this and additional works at: <https://scholarworks.wmich.edu/pure>



Part of the Geology Commons

WMU ScholarWorks Citation

MGRRE, "MGRRE_PureOilScoutTickets_Felthouse_1_21035088730000" (2021). *Legacy Scout Tickets from Pure Oil Company*. 1321.

<https://scholarworks.wmich.edu/pure/1321>

This Document is brought to you for free and open access via ScholarWorks at WMU. It has been accepted for inclusion in Legacy Scout Tickets from Pure Oil Company by an authorized administrator of ScholarWorks at WMU. See the National Digital Catalogue - Science Base Catalogue for more collections submitted by MGRRE.



MGRRE_PureOilScoutTickets_Felthouse_1_21035088730000

API 21035088730000

Permit Number 8873

Lease Name Felthouse

Well Number 1

County Clare

Township 20N

Range 03W

Section 3

2021 DEQ or Pure co_name Hilliard, Eugene

Pure Number 390

Latitude 44.15975

Longitude -84.64969

DATE August 20, 1941

LOCATION REPORT

No.

STATE Michigan COUNTY Clare DIST. Franklin TWP. Franklin SEC. 3 TOWN 20 N RANGE 3 W

WELL No. 1 (SERIAL No. 390) FARM Felthouse ACRES

NAME OF STREAM OR WATERS QUADRANGLE 3 1/2 NE NE

OPERATOR Eugene Hilliard Map Franklin Township, Clare County

330 330 Feet from North Line of Farm

660 660 " " East " " "

" " South " " "

" " West " " "

Feet from North Line of Section

660 660 " " East " 1/4 "

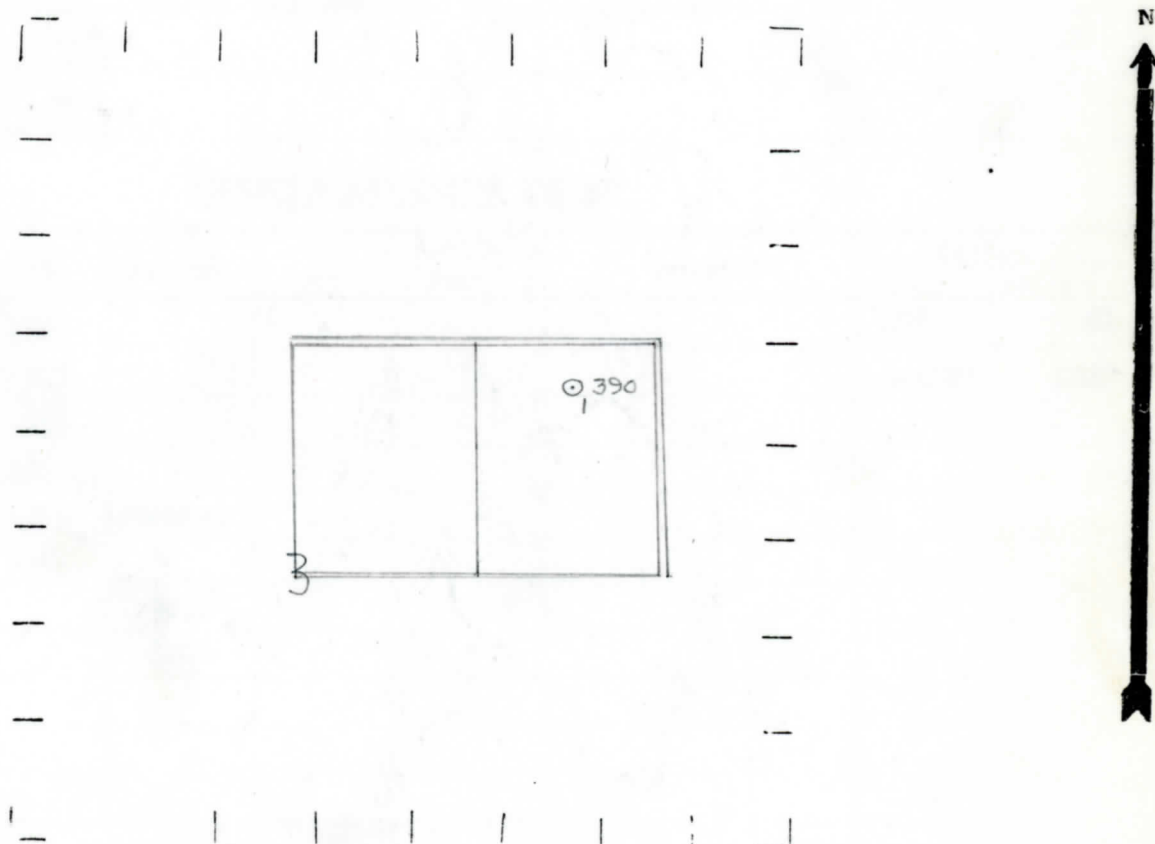
1341 1341 " " South " " "

" " West " " "

LEGEND

- LOCATION, RIG, DRILLING, GAS WELL, OIL WELL, SMALL OIL WELL, DRY HOLE, DRY SHOWING OIL, DRY SHOWING GAS, ABANDONED LOCATION, ABANDONED GAS WELL, ABANDONED OIL WELL

NOTE: Below make tracing from map. (when no map is obtainable make sketch) showing farm, center of section, this location with measurements and also wells, dry holes, or other locations in the vicinity of this location.



REMARKS:

SIGNED

W

Superintendent or Foreman.

Michigan Producing Division

Date November 26, 1941 No. 390
 State Mich. County Clare ~~Franklin~~ Twp. Franklin Sec. 3 Twp. 20 N Rge. 3 W
 Well No. 1 (Serial No.) ~~County No.~~ 390 Farm Felthouse Acres _____
 Operator Eugene Hilliard Information secured ~~from~~ By Scouting Department
 Date well started 8-25-41 Date well completed 10-2-41 Elevation 1280.5

PRODUCTION RECORD

1st 24 hours natural Temporarily abandoned.
 2nd 24 hours natural _____
 Date of shot _____ No. of quarts _____ From _____ to _____ From _____ to _____
 Date of acid _____ No. of gallons _____
 1st 24 hours after acid _____ shot
 2nd 24 hours after acid _____ shot

FORMATION AND CASING RECORD

Formation	Top	Bottom	Top Pay	Bottom Pay	Remarks	Casing	
						Size	Set at
Brown Dolomite	1360					10"	81
Mich. Stray	1505					6-5/8"	1867
Marshall	1638						
Red-Rock	1710						
Antrim	2740						
Trav. Form.	3335	(Sample)					
Traverse Lime	3347	"					
Total Depth		3500					
Plugged back:		3200					

Remarks 2055 CTM equals 2055' SLM; 3442' CTM equals 3442' SLM.

Signed _____ D. C. Shackelford