



Western Michigan University
ScholarWorks at WMU

Legacy Scout Tickets from Pure Oil Company

8-20-2021

**MGRRE_PureOilScoutTickets_Callahan,
Sheral_1_21035092700000**

MGRRE
Western Michigan University

Follow this and additional works at: <https://scholarworks.wmich.edu/pure>



Part of the Geology Commons

WMU ScholarWorks Citation

MGRRE, "MGRRE_PureOilScoutTickets_Callahan, Sheral_1_21035092700000" (2021). *Legacy Scout Tickets from Pure Oil Company*. 1363.
<https://scholarworks.wmich.edu/pure/1363>

This Document is brought to you for free and open access via ScholarWorks at WMU. It has been accepted for inclusion in Legacy Scout Tickets from Pure Oil Company by an authorized administrator of ScholarWorks at WMU. See the National Digital Catalogue - Science Base Catalogue for more collections submitted by MGRRE.



MGRRE_PureOilScoutTickets_Callahan, Sheral_1_21035092700000

API 21035092700000

Permit Number 9270

Lease Name Callahan, Sheral

Well Number 1

County Clare

Township 18N

Range 05W

Section 25

2021 DEQ or Pure co_name Freeman Oil Company

Pure Number 434

Latitude 43.91629

Longitude -84.85536

Corrected
Corrected

434

THE PURE OIL COMPANY
LOCATION REPORT

Date December 10, 1941

Serial No. 434

A.F.E. No. _____

Division Mich. Producing

District _____

Lease _____

Sheral Callahan
Sheral Callahan

Acres _____ Lease No. _____

Elevation _____

Well No. 1

Quadrangle SE-SW-SE Lot 25

Sec. 25

Twp. 18 N

Rge. 5 W

XBK

XOBT.

Lincoln

Survey _____ County Clare

State _____

Michigan

Operator Freeman Oil Co

Map Lincoln Township, Clare County

330 330 Feet North of South Line of Lease

" East " West " " "

" South " North " " "

330 330 " West " East " " "

330 330 Feet North of South Line of Section

" East " West " " "

" South " North " " "

330 330 " West " East " " "

LEGEND

○ Location



Gas Well



Oil Well



Dry Hole



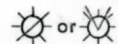
Dry Showing Oil



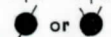
Dry Showing Gas



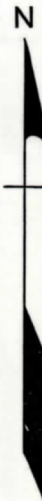
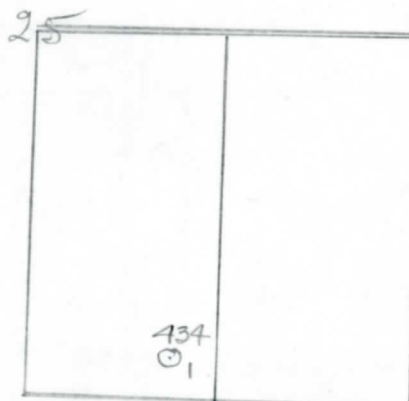
Abandoned Location



Abandoned Gas Well



Abandoned Oil Well



Correcting location

Remarks: Correcting location

Scale _____

Submitted by _____

Civil Engineer

Approved by _____

Division Manager

Approved by _____

Vice-President-General Manager

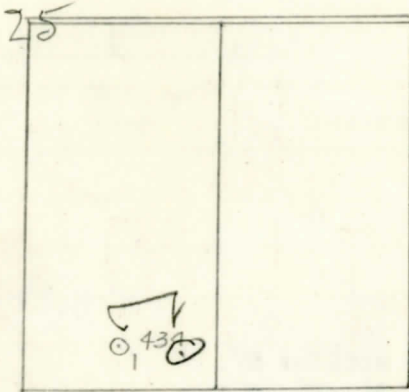
Date December 3, 1941 Division Michigan Producing District Lease SHERAL Callahan Acres Lease No. Elevation Well No. 1 Quadrangle C 32 SW SE Sec. 25 Twp. 18 N Rge. 5 W Twp. Lincoln Survey County Clare State Michigan Operator Freeman Oil Company Map Lincoln Township, Clare County

330 330 Feet North of South Line of Lease " East " West " " " " South " North " " " " West " East " " " 660 660 Feet North of South Line of Section " East " West " " " " South " North " " " " West " East " " " "

Low

LEGEND

- Location
- Gas Well
- Oil Well
- Dry Hole
- Dry Showing Oil
- Dry Showing Gas
- Abandoned Location
- Abandoned Gas Well
- Abandoned Oil Well



Remarks: Scale

Submitted by Civil Engineer Approved by Division Manager Vice-President - General Manager

No. 434

Well No. 1 (Serial No.) ~~Serial No.~~ 434 Farm Spheral Callahan Acres

Operator Freeman Oil Company Information secured from Scouting Department By _____

Date well started 12-20-41 Date well completed 2-27-42 Elevation 1029.7

PRODUCTION RECORD

1st 24 hours natural	Dry Hole
----------------------	----------

2nd 24 hours natural

Date of shot	No. of quarts	From	to	From	to
--------------	------------------	------	----	------	----

Date of acid	No. of gallons
--------------	----------------

shot
1st 24 hours after acid

shot

2nd 24 hours after acid

FORMATION AND CASING RECORD

[illegible]

Remarks 1409' CTM equals 1416' SLM; 3974' CTM equals 3977' SLM.

Signed

D. C. Shackelford