



Western Michigan University  
ScholarWorks at WMU

---

Legacy Scout Tickets from Pure Oil Company

---

8-20-2021

**MGRRE\_PureOilScoutTickets\_ M G S C 733 aka Reber-Randall-  
Nevins\_114\_21035093530000**

MGRRE

*Western Michigan University*

Follow this and additional works at: <https://scholarworks.wmich.edu/pure>



Part of the Geology Commons

---

#### WMU ScholarWorks Citation

MGRRE, "MGRRE\_PureOilScoutTickets\_ M G S C 733 aka Reber-Randall-Nevins\_114\_21035093530000" (2021). *Legacy Scout Tickets from Pure Oil Company*. 1372.  
<https://scholarworks.wmich.edu/pure/1372>

This Document is brought to you for free and open access via ScholarWorks at WMU. It has been accepted for inclusion in Legacy Scout Tickets from Pure Oil Company by an authorized administrator of ScholarWorks at WMU. See the National Digital Catalogue - Science Base Catalogue for more collections submitted by MGRRE.



---

**MGRRE\_PureOilScoutTickets\_ M G S C 733 aka Reber-Randall-  
Nevins\_114\_21035093530000**

API 21035093530000

Permit Number 9353

Lease Name M G S C 733 aka Reber-Randall-Nevins

Well Number 114

County Clare

Township 20N

Range 05W

Section 5

2021 DEQ or Pure co\_name Consumers Energy Company

Pure Number 443

Latitude 44.1506122

Longitude -84.9441237

# THE PURE OIL COMPANY LOCATION REPORT

Serial No. 443

A.F.E. No. \_\_\_\_\_

Date December 29, 1941

Division Mich. Producing District \_\_\_\_\_ Lease Reber-Randall-Nevins  
*Reber-Randall-Nevins*

Acres \_\_\_\_\_ Lease No. \_\_\_\_\_ Elevation \_\_\_\_\_ Well No. 114

Quadrangle CSW Sec. 18 Twp. 20 N Rge. 6 W Twp. Winterfield  
*CSW* *18* *20 N* *6 W* *Winterfield*

Survey \_\_\_\_\_ County Clare State Michigan  
*Clare*

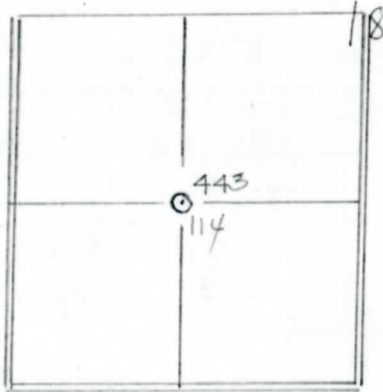
Operator Taggart Brothers Company Map Winterfield Township, Clare County  
*Taggart Brothers Company* *Winterfield Township, Clare County*

		Feet North of South Line of Lease
		" East " West " " "
<u>1320</u>	<u>1320</u>	" South " North " " "
<u>1320</u>	<u>1320</u>	" West " East " " "
		Feet North of South Line of Section
<u>1320</u>	<u>1320</u>	" East " West " " "
		" South " North " " "
		" West " East " " "

### LEGEND

○ Location

- ☀ Gas Well
- Oil Well
- ∅ or ○ Dry Hole
- or ● Dry Showing Oil
- ☀ Dry Showing Gas
- ⊖ Abandoned Location
- ☀ or ⊖ Abandoned Gas Well
- or ● Abandoned Oil Well



Scale \_\_\_\_\_

Remarks: \_\_\_\_\_  
\_\_\_\_\_  
\_\_\_\_\_

Submitted by W \_\_\_\_\_ Approved by \_\_\_\_\_  
Civil Engineer Division Manager

Approved by \_\_\_\_\_  
Vice-President - General Manager

COMPLETION RECORD OF WELLS DRILLED BY OTHER OPERATORS

Michigan Producing Division

Date January 19, 1944 No. 443
State Mich. County Clare Twp. Winterfield Sec. 18 Twp. 20 N Rge. 6 W
Well No. 114 (443) Farm Reber-Randall-Nevis Acres
Operator Taggart Brothers Company Information secured by Scouting Department
Date well started Not started. Date well completed Not completed. Elevation

PRODUCTION BOARD

1st 24 hours natural Location abandoned.
2nd 24 hours natural
Date of shot No. of quarts From to From to
Date of acid No. of gallons
1st 24 hours after acid shot
2nd 24 hours after acid shot

FORMATION AND CASING RECORD

Table with columns: Formation, Top, Bottom, Top Pay, Bottom Pay, Remarks, Casing Size, Casing Set at. Includes text 'Location abandoned 1-18-44.'

Remarks

Signed D. C. Shackelford