



Western Michigan University
ScholarWorks at WMU

Legacy Scout Tickets from Pure Oil Company

8-20-2021

MGRRE_PureOilScoutTickets_Phares, W H_4_21035094820000

MGRRE

Western Michigan University

Follow this and additional works at: <https://scholarworks.wmich.edu/pure>



Part of the Geology Commons

WMU ScholarWorks Citation

MGRRE, "MGRRE_PureOilScoutTickets_Phares, W H_4_21035094820000" (2021). *Legacy Scout Tickets from Pure Oil Company*. 1383.

<https://scholarworks.wmich.edu/pure/1383>

This Document is brought to you for free and open access via ScholarWorks at WMU. It has been accepted for inclusion in Legacy Scout Tickets from Pure Oil Company by an authorized administrator of ScholarWorks at WMU. See the National Digital Catalogue - Science Base Catalogue for more collections submitted by MGRRE.



MGRRE_PureOilScoutTickets_Phares, W H_4_21035094820000

API 21035094820000

Permit Number 9482

Lease Name Phares, W H

Well Number 4

County Clare

Township 20N

Range 06W

Section 32

2021 DEQ or Pure co_name Oxy USA, Incorporated

Pure Number 464

Latitude 44.08659

Longitude -85.05211

THE PURE OIL COMPANY LOCATION REPORT

Serial No. 464
464

Date April 1, 1942

A.F.E. No. _____

Division Mich. Producing District _____ Lease _____

W. H. Phares

Acres _____ Lease No. _____ Elevation _____ Well No. 4

Quadrangle C 1/2 NE NE 1/4 Sec. 332 Twp. 220 N Rge. 6 W ~~Dist.~~ Winterfield

Survey _____ County Clare State Michigan

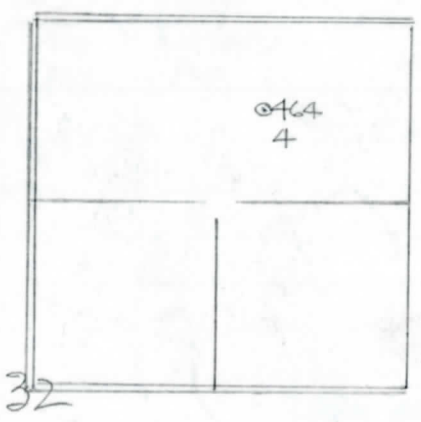
Operator Cities Service Oil Company Map Winterfield Township, Clare County

660	660	Feet North of South Line of Lease
		" East " West " " "
		" South " North " " "
990	990	" West " East " 1/4 "
		Feet North of South Line of Section
		" East " West " " "
660	660	" South " North " " "
990	990	" West " East " " "

Low

LEGEND

- Location
- ☀ Gas Well
- Oil Well
- ∅ or ○ Dry Hole
- Dry Showing Oil
- ☀ Dry Showing Gas
- ⊗ Abandoned Location
- ☀ or ☀ Abandoned Gas Well
- or ● Abandoned Oil Well



Scale _____

Remarks: _____

Submitted by W _____
Civil Engineer

Approved by _____
Division Manager

Approved by _____
Vice-President - General Manager

Michigan Producing Division

Date May 27, 1942 No. 464
 State Mich. County Clare Twp. Winterfield Sec. 32 Twp. 20 N Rge. 6 W
 Well No. 4 (Serial No.) (County No.) 464 Farm W. H. Phares Acres _____
 Operator Cities Service Oil Company Information secured ~~from~~ Scouting Department By _____
 Date well started 4-15-42 Date well completed 5-19-42 Elevation 1081.1

PRODUCTION RECORD

1st 24 hours natural Dry Hole
 2nd 24 hours natural _____
 Date of shot _____ No. of quarts _____ From _____ to _____ From _____ to _____
 Date of acid _____ No. of gallons _____
 1st 24 hours after acid shot _____
 2nd 24 hours after acid shot _____

FORMATION AND CASING RECORD

Formation	Top	Bottom	Top Pay	Bottom Pay	Remarks	Casing	
						Size	Set at
Stray	1260	(Log)				10"	82
Marshall	1348	"				6-5/8"	1625
"		1505				5-3/16"	3726
Antrim	2352						
Traverse Lime	3054						
Dundee	3725	S.L.M.					
Monroe	3772				Show salt water 3772' to 3778'. 1000 ft. water 3785' to 3786'.		
Total Depth		3786					

Remarks _____

Signed D. C. Shackelford