



Western Michigan University  
ScholarWorks at WMU

---

Legacy Scout Tickets from Pure Oil Company

---

8-20-2021

**MGRRE\_PureOilScoutTickets\_Goodrich-  
Crane\_8\_21035098610000**

MGRRE

*Western Michigan University*

Follow this and additional works at: <https://scholarworks.wmich.edu/pure>



Part of the Geology Commons

---

#### **WMU ScholarWorks Citation**

MGRRE, "MGRRE\_PureOilScoutTickets\_Goodrich-Crane\_8\_21035098610000" (2021). *Legacy Scout Tickets from Pure Oil Company*. 1415.

<https://scholarworks.wmich.edu/pure/1415>

This Document is brought to you for free and open access via ScholarWorks at WMU. It has been accepted for inclusion in Legacy Scout Tickets from Pure Oil Company by an authorized administrator of ScholarWorks at WMU. See the National Digital Catalogue - Science Base Catalogue for more collections submitted by MGRRE.



---

**MGRRE\_PureOilScoutTickets\_Goodrich-Crane\_8\_21035098610000**

API 21035098610000

Permit Number 9861

Lease Name Goodrich-Crane

Well Number 8

County Clare

Township 19N

Range 06W

Section 5

2021 DEQ or Pure co\_name Taggart Brothers Company

Pure Number 506

Latitude 44.07016

Longitude -85.06356

COMPLETION REPORT THE PURE OIL COMPANY OTHER OPERATORS

Date November 11, 1942 LOCATION REPORT A.F.E. No. \_\_\_\_\_

Division Mich. Producing District \_\_\_\_\_ Lease Goodrich-Crane

Acres \_\_\_\_\_ Lease No. \_\_\_\_\_ Elevation \_\_\_\_\_ Well No. 8 (Serial No. 506)

Quadrangle C NW Sec. 5 Twp. 19 N Rge. 6 W Twp. Redding

Survey \_\_\_\_\_ County Clare State Michigan

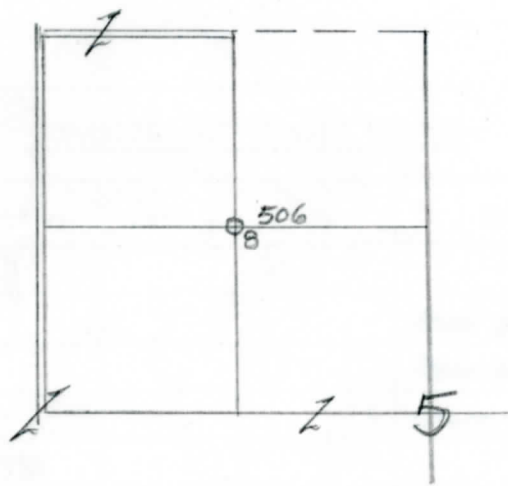
Operator Taggart Bros Co. Map Redding Twp - Clare Co.

<u>1320'</u>	<u>1320</u>	Feet from North Line of Lease
<u>1320'</u>	<u>1320</u>	" " East " " "
		" " South " " "
		" " West " " "
		Feet from North Line of Section
<u>1320'</u>	<u>1320</u>	" " East " " "
<u>1320'</u>	<u>1320</u>	" " South " " "
		" " West " " "

*900  
11-5-41  
8 1/4  
322*

LEGEND

- Location
- ☉ Gas Well
- Oil Well
- ☉ or ☉ Gas - Distillate Well
- or ○ Dry Hole
- or ● Dry Showing Oil
- ☉ Dry Showing Gas
- ⊙ Abandoned Location
- ☉ or ☉ Abandoned Gas Well
- or ● Abandoned Oil Well
- or ○ Input Well



Scale \_\_\_\_\_

Remarks: \_\_\_\_\_

Submitted by N Civil Engineer Approved by \_\_\_\_\_ Division Manager

Approved by \_\_\_\_\_ Vice-President - General Manager

**Michigan Producing** Division

Date 11-18-42 No. 506  
 State Mich. County Clare ~~Rick.~~ Twp. Redding Sec. 5 Twp. 19 N Rge. 6 W  
 Well No. 8 (Serial No.) ~~506~~ 506 Farm Goodrich-Crane Acres \_\_\_\_\_  
 Operator Taggart Brothers Company Information secured ~~from~~ Scouting Department By \_\_\_\_\_  
 Date well started 11-5-42 Date well completed 11-10-42 Elevation 1081.1

PRODUCTION RECORD

1st 24 hours natural Dry Hole  
 2nd 24 hours natural \_\_\_\_\_  
 Date of shot \_\_\_\_\_ No. of quarts \_\_\_\_\_ From \_\_\_\_\_ to \_\_\_\_\_ From \_\_\_\_\_ to \_\_\_\_\_  
 Date of acid \_\_\_\_\_ No. of gallons \_\_\_\_\_  
 1st 24 hours after acid \_\_\_\_\_ shot  
 2nd 24 hours after acid \_\_\_\_\_ shot

FORMATION AND CASING RECORD

Formation	Top	Bottom	Top Pay	Bottom Pay	Remarks	Casing	
						Size	Set at
Brown Dolomite	1152 ?					8-1/4"	322
Stray	1304				Show gas 1306. Show oil, gas, and water at 1350.	5-3/16"	1305
Total Depth		1350					

Remarks \_\_\_\_\_  
 \_\_\_\_\_  
 \_\_\_\_\_  
 \_\_\_\_\_

Signed D. C. Shackelford