



Western Michigan University  
ScholarWorks at WMU

---

Legacy Scout Tickets from Pure Oil Company

---

8-20-2021

## MGRRE\_PureOilScoutTickets\_State Wintertfield \_C-1\_na

MGRRE

*Western Michigan University*

Follow this and additional works at: <https://scholarworks.wmich.edu/pure>



Part of the Geology Commons

---

### WMU ScholarWorks Citation

MGRRE, "MGRRE\_PureOilScoutTickets\_State Wintertfield \_C-1\_na" (2021). *Legacy Scout Tickets from Pure Oil Company*. 1440.

<https://scholarworks.wmich.edu/pure/1440>

This Document is brought to you for free and open access via ScholarWorks at WMU. It has been accepted for inclusion in Legacy Scout Tickets from Pure Oil Company by an authorized administrator of ScholarWorks at WMU. See the National Digital Catalogue - Science Base Catalogue for more collections submitted by MGRRE.



---

MGRRE\_PureOilScoutTickets\_State Wintertfield \_C-1\_na

API na

Permit Number na

Lease Name State Wintertfield

Well Number C-1

County Clare

Township 20N

Range 06W

Section 2

2021 DEQ or Pure co\_name Sun Oil Co

Pure Number 534

Latitude 44.1548367

Longitude -84.9980165

# THE PURE OIL COMPANY

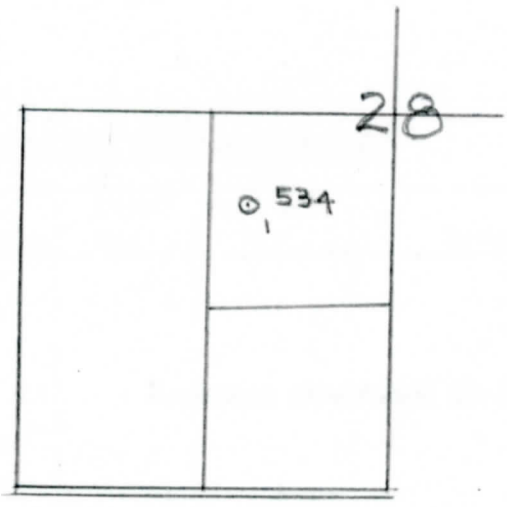
## LOCATION REPORT

Date July 28, 1943 A.F.E. No. \_\_\_\_\_  
 Division Mich. Producing District \_\_\_\_\_ Lease State - Winterfield  
 Acres \_\_\_\_\_ Lease No. \_\_\_\_\_ Elevation \_\_\_\_\_ Well No. C-1 (Serial No. 534)  
 Quadrangle CW 1/2 - NE - SW Sec. 28 Twp. 20 N Rge. 6 W Twp. Winterfield  
 Survey \_\_\_\_\_ County Clare State Michigan  
 Operator Sun Oil Co. Map Winterfield Twp. - Clare Co.  
660 660 Feet from North Line of Lease

\_\_\_\_\_ " " East " " "  
 \_\_\_\_\_ " " South " " "  
330 330 " " West 1/4 " "  
660 660 Feet from North Line of Section  
990 990 " " East " " "  
 \_\_\_\_\_ " " South " " "  
 \_\_\_\_\_ " " West " " "

**LEGEND**

- Location
- ☀ Gas Well
- Oil Well
- ☀ Gas - Distillate Well
- or ○ Dry Hole
- Dry Showing Oil
- ☀ Dry Showing Gas
- ⊗ Abandoned Location
- ☀ or ☀ Abandoned Gas Well
- or ● Abandoned Oil Well
- or ○ Input Well



Remarks: \_\_\_\_\_  
 \_\_\_\_\_  
 \_\_\_\_\_

Scale \_\_\_\_\_

Submitted by RJ Civil Engineer Approved by \_\_\_\_\_ Division Manager  
 Approved by \_\_\_\_\_ Vice-President - General Manager

