



Western Michigan University  
ScholarWorks at WMU

---

Legacy Scout Tickets from Pure Oil Company

---

8-20-2021

## MGRRE\_PureOilScoutTickets\_Ranch Oil Company\_4\_na

MGRRE

*Western Michigan University*

Follow this and additional works at: <https://scholarworks.wmich.edu/pure>



Part of the Geology Commons

---

### WMU ScholarWorks Citation

MGRRE, "MGRRE\_PureOilScoutTickets\_Ranch Oil Company\_4\_na" (2021). *Legacy Scout Tickets from Pure Oil Company*. 1448.

<https://scholarworks.wmich.edu/pure/1448>

This Document is brought to you for free and open access via ScholarWorks at WMU. It has been accepted for inclusion in Legacy Scout Tickets from Pure Oil Company by an authorized administrator of ScholarWorks at WMU. See the National Digital Catalogue - Science Base Catalogue for more collections submitted by MGRRE.



---

**MGRRE\_PureOilScoutTickets\_Ranch Oil Company\_4\_na**

**API na**

**Permit Number na**

**Lease Name Ranch Oil Company**

**Well Number 4**

**County Clare**

**Township 18N**

**Range 04W**

**Section 30**

**2021 DEQ or Pure co\_name Ranch Oil Company**

**Pure Number 542**

**Latitude 43.9227663**

**Longitude -84.8386569**

# THE PURE OIL COMPANY

## LOCATION REPORT

A.F.E. No. \_\_\_\_\_

Date August 25, 1943

Division Mich. Producing

District \_\_\_\_\_

Lease \_\_\_\_\_

Ranch Oil Co  
Ranch Oil Company

Acres \_\_\_\_\_ Lease No. 30

Elevation \_\_\_\_\_

Well No. 4

(Serial No. 542)

Quadrangle SE SW - SW  
SE SW SW

Sec. 30

Twp. 18 N

Rge. 4 W

~~Box~~  
~~Box~~  
Twp. Hatton  
Hatton

Survey \_\_\_\_\_ County Clare

State Michigan

Operator Ranch Oil Co  
Ranch Oil Company

Map Hatton Twp - Clare Co.  
Hatton Township, Clare County

Feet from North Line of Lease

" " East " " "

330 330 " " South " " "

990 990 " " West " " "

Feet from North Line of Section

" " East " " "

330 330 " " South " 1/4

990 990 " " West " " "

### LEGEND

○ Location

☀ Gas Well

● Oil Well

☀ Gas - Distillate Well

○ or ○ Dry Hole

● Dry Showing Oil

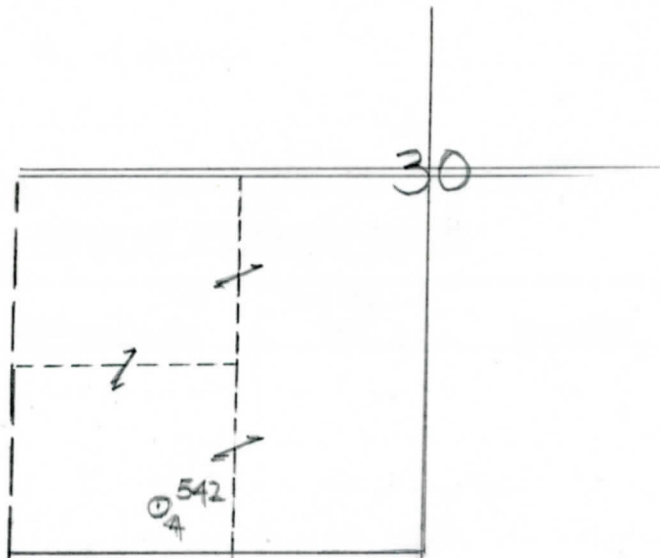
☀ Dry Showing Gas

⊗ Abandoned Location

☀ or ☀ Abandoned Gas Well

● or ● Abandoned Oil Well

⊗ or ⊗ Input Well



N



Scale \_\_\_\_\_

Remarks: \_\_\_\_\_

Submitted by RN

Civil Engineer

Approved by \_\_\_\_\_

Division Manager

Approved by \_\_\_\_\_

Vice-President - General Manager

