



Western Michigan University  
ScholarWorks at WMU

---

Legacy Scout Tickets from Pure Oil Company

---

8-20-2021

**MGRRE\_PureOilScoutTickets\_Oxendale\_1\_21035103110000**

MGRRE

*Western Michigan University*

Follow this and additional works at: <https://scholarworks.wmich.edu/pure>



Part of the Geology Commons

---

#### **WMU ScholarWorks Citation**

MGRRE, "MGRRE\_PureOilScoutTickets\_Oxendale\_1\_21035103110000" (2021). *Legacy Scout Tickets from Pure Oil Company*. 1450.

<https://scholarworks.wmich.edu/pure/1450>

This Document is brought to you for free and open access via ScholarWorks at WMU. It has been accepted for inclusion in Legacy Scout Tickets from Pure Oil Company by an authorized administrator of ScholarWorks at WMU. See the National Digital Catalogue - Science Base Catalogue for more collections submitted by MGRRE.



---

**MGRRE\_PureOilScoutTickets\_Oxendale\_1\_21035103110000**

API 21035103110000

Permit Number 10311

Lease Name Oxendale

Well Number 1

County Clare

Township 18N

Range 04W

Section 31

2021 DEQ or Pure co\_name Rowmor Corporation and Leonard Drilling Company and Gordon, O.

Pure Number 544

Latitude 43.91271

Longitude -84.84523

# THE PURE OIL COMPANY

## LOCATION REPORT

A.F.E. No. \_\_\_\_\_

Date August 25, 1943

Oxendale

Division Mich. Producing District \_\_\_\_\_

Lease Oxendale

Acres \_\_\_\_\_ Lease No. \_\_\_\_\_ Elevation \_\_\_\_\_ Well No. 1 (Serial No. 544)

Quadrangle SE - NW - NW Sec. 31 Twp. 18 N Rge. 4 W Twp. Hatton

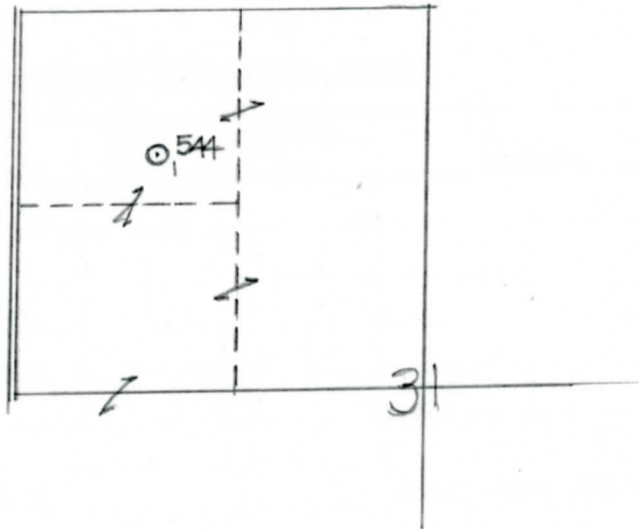
Survey \_\_\_\_\_ County Clare State Michigan

Operator Rowmor Corp., Leonard Drilling Co. - Gordon Oil Co. Map Hatton Township, Clare County

Feet from North Line of Lease	
<u>330</u>	330 " " East " " "
<u>330</u>	330 " " South " " "
	" " West " " "
Feet from North Line of Section	
<u>990</u>	990 " " East " " "
	" " South " " "
<u>990</u>	990 " " West " " "

**LEGEND**

- Location
- ☀ Gas Well
- Oil Well
- ☀ Gas - Distillate Well
- or ○ Dry Hole
- Dry Showing Oil
- ☀ Dry Showing Gas
- ⊙ Abandoned Location
- ☀ or ☀ Abandoned Gas Well
- or ● Abandoned Oil Well
- or ○ Input Well



Scale \_\_\_\_\_

Remarks: \_\_\_\_\_  
 \_\_\_\_\_  
 \_\_\_\_\_

Submitted by RN Civil Engineer

Approved by \_\_\_\_\_ Division Manager

Approved by \_\_\_\_\_ Vice-President - General Manager

Michigan Producing Division

Date September 15, 1943 No. 544  
 State Mich. County Clare ~~District~~ Twp. Hatton Sec. 31 Twp. 18 N Rge. 4 W  
 (Serial No.)  
 Well No. 1 (County No.) 544 Farm Oxendale Farm Acres \_\_\_\_\_  
 Operator Rowmor Corp., Leonard Drlg. Co., and Gordon Oil Co. Information secured ~~from~~ Scouting Department By \_\_\_\_\_  
 Date well started 8-27-43 Date well completed 9-13-43 Elevation 1041.2

PRODUCTION RECORD

1st 24 hours natural Dry Hole  
 2nd 24 hours natural \_\_\_\_\_  
 Date of shot \_\_\_\_\_ No. of quarts \_\_\_\_\_ From \_\_\_\_\_ to \_\_\_\_\_ From \_\_\_\_\_ to \_\_\_\_\_  
 Date of acid \_\_\_\_\_ No. of gallons \_\_\_\_\_  
 shot  
 1st 24 hours after acid \_\_\_\_\_  
 shot  
 2nd 24 hours after acid \_\_\_\_\_

FORMATION AND CASING RECORD

Formation	Top	Bottom	Top Pay	Bottom Pay	Remarks	Casing	
						Size	Set at
Brown Dolomite	1342 ?					10"	580
Mich. Stray	1539						
Marshall	1604						
Red Rock	1750	1805					
Antrim	2720						
Traverse Lime	3335						
Bell Shale	3935						
Dundee	4012	S.L.M.			Small show oil and gas 4014-4015. Water 4027-4030.		
Total Depth		4030					

Remarks Core 3983'-4000' shale; core 4000-4015; core 4000-12 shale; 4015 light dolomite; 4014-4015 small show oil - core 4015-4030 dolomite.

Signed D. C. Shackelford