



Western Michigan University
ScholarWorks at WMU

Legacy Scout Tickets from Pure Oil Company

8-20-2021

MGRRE_PureOilScoutTickets_Miltner, Henry Estate of_1_21035103280000

MGRRE

Western Michigan University

Follow this and additional works at: <https://scholarworks.wmich.edu/pure>



Part of the Geology Commons

WMU ScholarWorks Citation

MGRRE, "MGRRE_PureOilScoutTickets_Miltner, Henry Estate of_1_21035103280000" (2021). *Legacy Scout Tickets from Pure Oil Company*. 1453.
<https://scholarworks.wmich.edu/pure/1453>

This Document is brought to you for free and open access via ScholarWorks at WMU. It has been accepted for inclusion in Legacy Scout Tickets from Pure Oil Company by an authorized administrator of ScholarWorks at WMU. See the National Digital Catalogue - Science Base Catalogue for more collections submitted by MGRRE.



MGRRE_PureOilScoutTickets_Miltner, Henry Estate of_1_21035103280000

API 21035103280000

Permit Number 10328

Lease Name Miltner, Henry Estate of

Well Number 1

County Clare

Township 20N

Range 06W

Section 1

2021 DEQ or Pure co_name Oryx Energy Company

Pure Number 547

Latitude 44.14786

Longitude -84.98052

THE PURE OIL COMPANY LOCATION REPORT

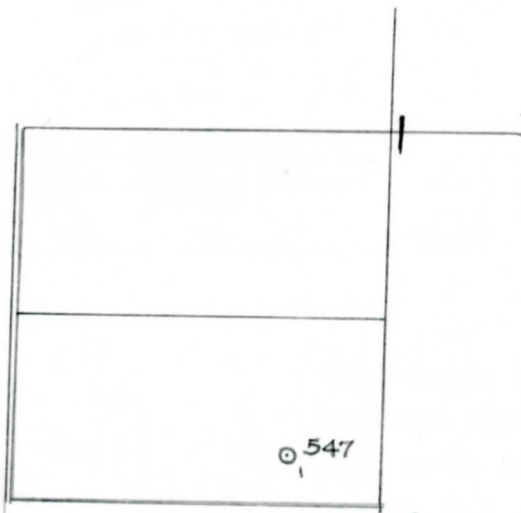
Date September 1, 1943 A.F.E. No. _____
 Division Mich. Producing District _____ Lease Estate of Henry Miltner
Estate of Henry Miltner
 Acres _____ Lease No. _____ Elevation _____ Well No. 1 (Serial No. 547)
 Quadrangle C S 1/2 SE SW Sec. 1 Twp. 20 N Rge. 6 W ~~ENX~~ ~~ENX~~ Winterfield
 Survey _____ County Clare State Michigan
 Operator Sun Oil Co. Map Winterfield Twp - Clare Co.
Sun Oil Company Winterfield Township, Clare County

		Feet from North Line of Lease	
<u>660</u>	<u>660</u>	" "	East " " "
<u>330</u>	<u>330</u>	" "	South " " "
		" "	West " " "
		Feet from North Line of Section	
<u>660</u>	<u>660</u>	" "	East " <u>1/4</u> "
<u>330</u>	<u>330</u>	" "	South " " "
		" "	West " " "

Low

LEGEND

- Location
- ☉ Gas Well
- Oil Well
- ☼ Gas - Distillate Well
- or ○ Dry Hole
- or ● Dry Showing Oil
- ☉ Dry Showing Gas
- ⊗ Abandoned Location
- ☼ or ☼ Abandoned Gas Well
- or ● Abandoned Oil Well
- or ○ Input Well



Scale _____

Remarks: _____

Submitted by RN Civil Engineer Approved by _____ Division Manager
 Approved by _____ Vice-President - General Manager

THE PURE OIL COMPANY

The Pure Oil Company

COMPLETION RECORD OF WELLS DRILLED BY OTHER OPERATORS

Michigan Producing Division

Date **December 29, 1943** No. **547**
 State **Mich.** County **Clare** ~~XXXXX~~ Twp. **Winterfield** Sec. **1** Twp. **20 N** Rge. **6 W**
 Well No. **1** (~~XXXXXXXX~~) **547** Farm **Est. of H. Miltner** Acres _____
 Operator **Sun Oil Company** Information secured ~~XXXX~~ By **Scouting Department**
 Date well started **10-20-43** Date well completed **12-21-43** Elevation **1161.0**

PRODUCTION BOARD

1st 24 hours natural **Dry Hole**
 2nd 24 hours natural _____
 Date of shot _____ No. of quarts _____ From _____ to _____ From _____ to _____
 Date of acid _____ No. of gallons _____
 shot _____
 1st 24 hours after acid _____
 shot _____
 2nd 24 hours after acid _____

FORMATION AND CASING RECORD

Formation	Top	Bottom	Top Pay	Bottom Pay	Remarks	Casing	
						Size	Set at
Brown Dolomite	1185	SIM				12"	138
Mich. Stray	1325	"				7"	1660
Traverse Lime	3154	"			See remarks below.	5-3/16"	3801
Dundee	3800	"			Show oil 3803-3804. Salt water 3804-05. 175 ft. oil and 700 ft. S.W. in 16 hrs. at 3805.		
Total Depth		3805.					

Remarks Show gas at 3160 - 2 bailers oil in 2 hrs. at 3162 - 150 ft. salt water 3166-3171.
 1322' DSM equals 1317' SIM; 3746' CTM equals 3736' SIM; 3802' CTM equals 3802' SIM.

Signed **D. C. Shackelford**