



Western Michigan University  
ScholarWorks at WMU

---

Legacy Scout Tickets from Pure Oil Company

---

8-20-2021

## MGRRE\_PureOilScoutTickets\_Gremason, et al\_1\_na

MGRRE

*Western Michigan University*

Follow this and additional works at: <https://scholarworks.wmich.edu/pure>



Part of the Geology Commons

---

### WMU ScholarWorks Citation

MGRRE, "MGRRE\_PureOilScoutTickets\_Gremason, et al\_1\_na" (2021). *Legacy Scout Tickets from Pure Oil Company*. 1468.

<https://scholarworks.wmich.edu/pure/1468>

This Document is brought to you for free and open access via ScholarWorks at WMU. It has been accepted for inclusion in Legacy Scout Tickets from Pure Oil Company by an authorized administrator of ScholarWorks at WMU. See the National Digital Catalogue - Science Base Catalogue for more collections submitted by MGRRE.



---

MGRRE\_PureOilScoutTickets\_Gremason, et al\_1\_na

API na

Permit Number na

Lease Name Gremason, et al

Well Number 1

County Clare

Township 18N

Range 04W

Section 31

2021 DEQ or Pure co\_name Freeman Oil Company

Pure Number 565

Latitude 43.9082194

Longitude -84.8386604

# THE PURE OIL COMPANY

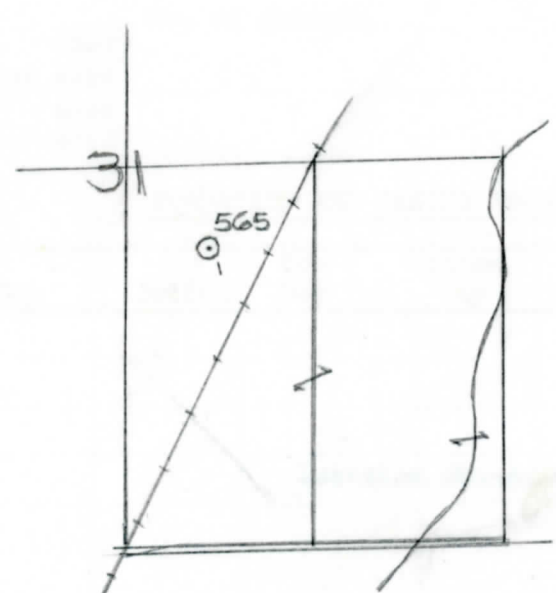
## LOCATION REPORT

Date March 22, 1944 A.F.E. No. \_\_\_\_\_  
 Division Mich. Producing District \_\_\_\_\_ Lease Grimason, et al  
Grimason, et al  
 Acres \_\_\_\_\_ Lease No. \_\_\_\_\_ Elevation \_\_\_\_\_ Well No. 1 (Serial No. 565)  
 Quadrangle NW-NW-SE Sec. 31 Twp. 18 N Rge. 4 W ~~HDEX~~ ~~D88X~~ Hatton  
 Survey \_\_\_\_\_ County Clare State Michigan  
 Operator Freeman Oil Company Map Hatton-Twp-Clare Co.  
590 590 Feet from North Line of Lease

\_\_\_\_\_ " " East " " "  
 \_\_\_\_\_ " " South " " "  
590 590 " " West " 1/4 "  
590 590 Feet from North Line of Section  
 \_\_\_\_\_ " " East " " "  
 \_\_\_\_\_ " " South " " "  
590 590 " " West " " "

### LEGEND

- Location
- ☀ Gas Well
- Oil Well
- ☀ Gas-Distillate Well
- or ○ Dry Hole
- Dry Showing Oil
- ☀ Dry Showing Gas
- ⊗ Abandoned Location
- ☀ or ☀ Abandoned Gas Well
- or ● Abandoned Oil Well
- or ○ Input Well



Remarks: \_\_\_\_\_ Scale \_\_\_\_\_  
 \_\_\_\_\_  
 \_\_\_\_\_

Submitted by RN Civil Engineer Approved by \_\_\_\_\_ Division Manager  
 Approved by \_\_\_\_\_ Vice-President - General Manager

