



Western Michigan University
ScholarWorks at WMU

Legacy Scout Tickets from Pure Oil Company

8-20-2021

**MGRRE_PureOilScoutTickets_Amsden, George
W_2_21035112630000**

MGRRE
Western Michigan University

Follow this and additional works at: <https://scholarworks.wmich.edu/pure>



Part of the Geology Commons

WMU ScholarWorks Citation

MGRRE, "MGRRE_PureOilScoutTickets_Amsden, George W_2_21035112630000" (2021). *Legacy Scout Tickets from Pure Oil Company*. 1491.
<https://scholarworks.wmich.edu/pure/1491>

This Document is brought to you for free and open access via ScholarWorks at WMU. It has been accepted for inclusion in Legacy Scout Tickets from Pure Oil Company by an authorized administrator of ScholarWorks at WMU. See the National Digital Catalogue - Science Base Catalogue for more collections submitted by MGRRE.



MGRRE_PureOilScoutTickets_Amsden, George W_2_21035112630000

API 21035112630000

Permit Number 11263

Lease Name Amsden, George W

Well Number 2

County Clare

Township 19N

Range 05W

Section 6

2021 DEQ or Pure co_name Oryx Energy Company

Pure Number 594

Latitude 44.06469

Longitude -84.96119

THE PURE OIL COMPANY

LOCATION REPORT

Date December 6, 1944 A.F.E. No. _____
 Division Mich. Producing District _____ Lease George W. Amsden
George W. Amsden
 Acres _____ Lease No. _____ Elevation _____ Well No. 2 (Serial No. 594)
 Quadrange C S 1/2 NE SW Sec. 6 Twp. 19 N Rge. 5 W Twp. Greenwood
C S 1/2 NE SW Greenwood
 Survey _____ County Clare State Michigan
 Operator Sun Oil Co. Map Greenwood Twp - Clare Co.
Sun Oil Company Greenwood Township, Clare County

990 990 Feet from North Line of Lease
 660 660 " " East " " "
 " " South " " "
 " " West " " "
 990 990 Feet from North Line of Section
 660 660 " " East " " "
 " " South " " "
 " " West " " "

LEGEND

○ Location

☀ Gas Well

● Oil Well

☀ Gas - Distillate Well

○ or ○ Dry Hole

● Dry Showing Oil

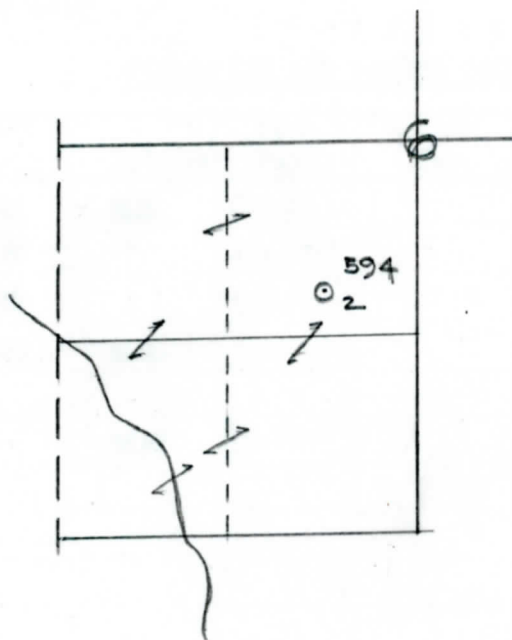
☀ Dry Showing Gas

⊙ Abandoned Location

☀ or ☀ Abandoned Gas Well

● or ● Abandoned Oil Well

● or ○ Input Well



N

Remarks: _____

Scale _____

Submitted by RN Civil Engineer

Approved by _____ Division Manager

Approved by _____ Vice-President - General Manager

