



Western Michigan University  
ScholarWorks at WMU

---

Legacy Scout Tickets from Pure Oil Company

---

8-20-2021

**MGRRE\_PureOilScoutTickets\_State Sterling et  
al\_2\_21035115420000**

MGRRE  
*Western Michigan University*

Follow this and additional works at: <https://scholarworks.wmich.edu/pure>



Part of the Geology Commons

---

#### **WMU ScholarWorks Citation**

MGRRE, "MGRRE\_PureOilScoutTickets\_State Sterling et al\_2\_21035115420000" (2021). *Legacy Scout Tickets from Pure Oil Company*. 1493.  
<https://scholarworks.wmich.edu/pure/1493>

This Document is brought to you for free and open access via ScholarWorks at WMU. It has been accepted for inclusion in Legacy Scout Tickets from Pure Oil Company by an authorized administrator of ScholarWorks at WMU. See the National Digital Catalogue - Science Base Catalogue for more collections submitted by MGRRE.



---

**MGRRE\_PureOilScoutTickets\_State Sterling et al\_2\_21035115420000**

API 21035115420000

Permit Number 11542

Lease Name State Sterling et al

Well Number 2

County Clare

Township 20N

Range 05W

Section 15

2021 DEQ or Pure co\_name Thiel, Bernard M.

Pure Number 598

Latitude 44.12878

Longitude -84.90364

THE PURE OIL COMPANY

LOCATION REPORT

Date May 16, 1945

A.F.E. No. \_\_\_\_\_

Division Mich. Producing District \_\_\_\_\_

Lease State - Sterling, et al  
State - Sterling, et al

Acres \_\_\_\_\_ Lease No. \_\_\_\_\_

Elevation \_\_\_\_\_ Well No. 2 (Serial No. 598)

Quadrangle C NW Sec. 15

Twp. 20 N Rge. 5 W Twp. Summerfield

Summerfield

Survey \_\_\_\_\_ County Clare

State Michigan

Operator Taggart Bros. Co.

Map Summerfield Twp. - Clare Co  
Summerfield Township, Clare County

1320 1320 Feet from North Line of Lease

1320 1320 " " East " " "

" " South " " "

" " West " " "

Feet from North Line of Section

" " East " " "

1320 1320 " " South " 1/4

1320 1320 " " West " " "

LEGEND

○ Location

☀ Gas Well

☀ Dry Showing Gas

● Oil Well

⊗ Abandoned Location

☀ Gas - Distillate Well

☀ or ⊗ Abandoned Gas Well

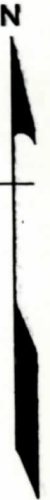
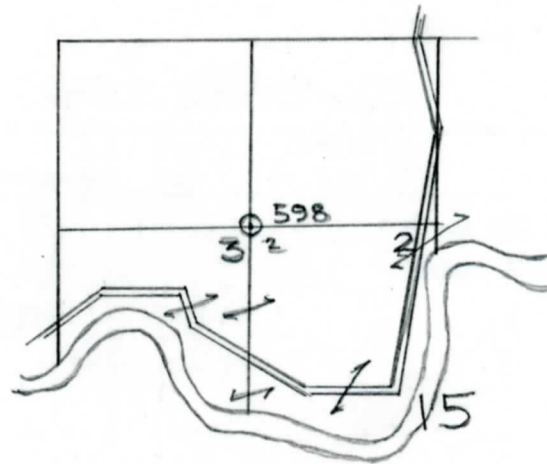
∅ or ○ Dry Hole

● or ⊗ Abandoned Oil Well

● Dry Showing Oil

● or ○ Input Well

*Handwritten notes:*  
1/2 well  
5" sp 5-13-45  
8 5/8  
250



Scale \_\_\_\_\_

Remarks: \_\_\_\_\_

Submitted by RN Civil Engineer

Approved by \_\_\_\_\_ Division Manager

Approved by \_\_\_\_\_ Vice-President - General Manager

