



Western Michigan University
ScholarWorks at WMU

Legacy Scout Tickets from Pure Oil Company

8-20-2021

**MGRRE_PureOilScoutTickets_Woodward, M J et
a_1_21035117940000**

MGRRE

Western Michigan University

Follow this and additional works at: <https://scholarworks.wmich.edu/pure>



Part of the Geology Commons

WMU ScholarWorks Citation

MGRRE, "MGRRE_PureOilScoutTickets_Woodward, M J et a_1_21035117940000" (2021). *Legacy Scout Tickets from Pure Oil Company*. 1510.

<https://scholarworks.wmich.edu/pure/1510>

This Document is brought to you for free and open access via ScholarWorks at WMU. It has been accepted for inclusion in Legacy Scout Tickets from Pure Oil Company by an authorized administrator of ScholarWorks at WMU. See the National Digital Catalogue - Science Base Catalogue for more collections submitted by MGRRE.



MGRRE_PureOilScoutTickets_Woodward, M J et al_1_21035117940000

API 21035117940000

Permit Number 11794

Lease Name Woodward, M J et al

Well Number 1

County Clare

Township 18N

Range 06W

Section 2

2021 DEQ or Pure co_name Ashby Drilling Company

Pure Number 616

Latitude 43.98204

Longitude -85.00313

THE PURE OIL COMPANY

LOCATION REPORT

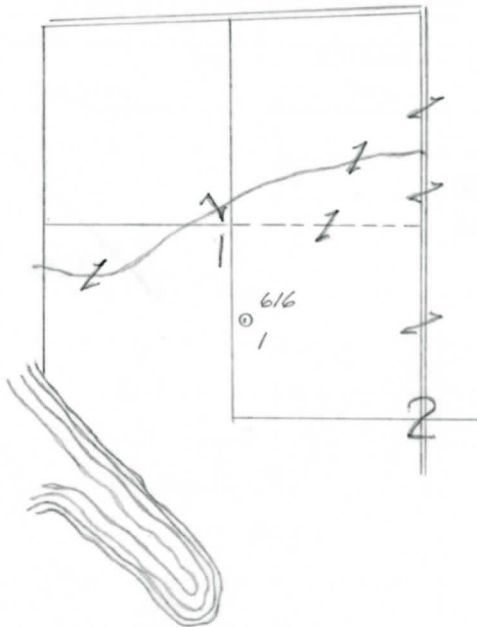
Date September 6, 1945 A.F.E. No. _____
 Division Mich. Producing District _____ Lease M. J. Woodward et al
 Acres _____ Lease No. _____ Elevation _____ Well No. 1 (Serial No. 616)
 Quadrangle W¹/₂ SE NW Sec. 2 Twp. 18 N Rge. 6 W ~~BOX~~ ~~OR~~ ~~BOX~~ FREEMAN
 Survey _____ County CLARE State Michigan
 Operator Ashby Drilling Co. Map Freeman Township, Clare County

660 660 Feet from North Line of Lease
1250 1250 " " East " " "
 " " South " " "
 " " West " " "
 Feet from North Line of Section
1250 1250 " " East " " 1/4
660 660 " " South " " "
 " " West " " "

LEGEND

- Location
- ☀ Gas Well
- Oil Well
- ☀ Gas - Distillate Well
- ∅ or ○ Dry Hole
- Dry Showing Oil
- ☀ Dry Showing Gas
- ⊗ Abandoned Location
- ☀ or ☀ Abandoned Gas Well
- or ● Abandoned Oil Well
- or ○ Input Well

see 300



Remarks: _____

Scale _____

Submitted by _____ Civil Engineer Approved by _____ Division Manager
 Approved by _____ Vice-President - General Manager

COMPLETION RECORD OF WELLS DRILLED BY OTHER OPERATORS

Michigan Producing Division

Date September 19, 1945 No. 616
 State Michigan Co. Clare District Freeman Sec. 2 Twp. 18 N Rge. 6 W
 Well No. 1 Serial No. 616 Farm M. J. Woodward, et al Acres
 Operator Ashby Drilling Company
 Date started 8-30-45 Date completed 9-12-45 Elevation 1111.0

PRODUCTION RECORD

1st 24 hours natural
 Date of shot No. of quarts From To From to
 Date of acid shot No. of gallons
 1st 24 hours after acid
 Completed as: Oil Well Gas Well Dry Hole X

FORMATION AND CASING RECORD

Formation	Top	Bottom	Top Pay	Bottom Pay	Remarks	Casing	
						Size	Set at
Brown Dolomite	1399	(-288)				6-5/8"	579
Mich. Stray	1518	(-407)			Show gas 1531 (-420) Salt water 1535. (-424)	4-1/2"	1500
Total Depth		1535	(-424)				

Remarks

Signed D. C. Shackelford