



Western Michigan University  
ScholarWorks at WMU

---

Legacy Scout Tickets from Pure Oil Company

---

8-20-2021

**MGRRE\_PureOilScoutTickets\_Frost & Mills\_7\_21035119090000**

MGRRE

*Western Michigan University*

Follow this and additional works at: <https://scholarworks.wmich.edu/pure>



Part of the Geology Commons

---

#### **WMU ScholarWorks Citation**

MGRRE, "MGRRE\_PureOilScoutTickets\_Frost & Mills\_7\_21035119090000" (2021). *Legacy Scout Tickets from Pure Oil Company*. 1513.

<https://scholarworks.wmich.edu/pure/1513>

This Document is brought to you for free and open access via ScholarWorks at WMU. It has been accepted for inclusion in Legacy Scout Tickets from Pure Oil Company by an authorized administrator of ScholarWorks at WMU. See the National Digital Catalogue - Science Base Catalogue for more collections submitted by MGRRE.



---

**MGRRE\_PureOilScoutTickets\_Frost & Mills\_7\_21035119090000**

API 21035119090000

Permit Number 11909

Lease Name Frost & Mills

Well Number 7

County Clare

Township 18N

Range 05W

Section 13

2021 DEQ or Pure co\_name Taggart Brothers Gas Company

Pure Number 621

Latitude 43.95557

Longitude -84.85397

THE PURE OIL COMPANY

LOCATION REPORT

Date October 17, 1945 A.F.E. No. \_\_\_\_\_

Division Mich. Producing District \_\_\_\_\_ Lease Frost-Mills

Acres \_\_\_\_\_ Lease No. \_\_\_\_\_ Elevation \_\_\_\_\_ Well No. 7 (Serial No. 621)

Quadrangle C-NE/4 Sec. 13 Twp. 18 N Rge. 5 W ~~SW~~ ~~SE~~ ~~NE~~ ~~NW~~ Lincoln

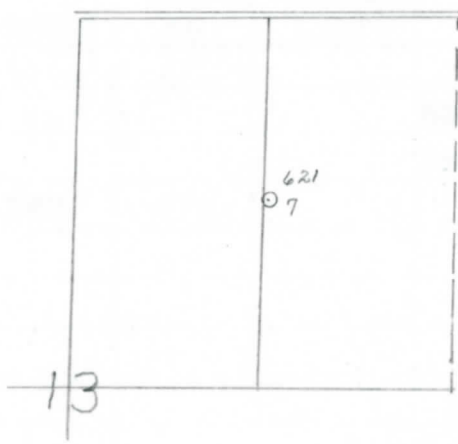
Survey \_\_\_\_\_ County Clare State Michigan

Operator Taggart Bros. Gas Co. Map Lincoln Township, Clare County

<u>1320</u>	<u>1320</u>	Feet from North Line of Lease
<u>1320</u>	<u>1320</u>	" " East " " "
_____	_____	" " South " " "
_____	_____	" " West " " "
_____	_____	Feet from North Line of Section
<u>1320</u>	<u>1320</u>	" " East " " " <u>1/4</u> "
<u>1320</u>	<u>1320</u>	" " South " " "
_____	_____	" " West " " "

LEGEND

- Location
- ☉ Gas Well
- Oil Well
- ☉ Gas - Distillate Well
- ∅ or ○ Dry Hole
- Dry Showing Oil
- ☉ Dry Showing Gas
- ⊗ Abandoned Location
- ☉ or ☉ Abandoned Gas Well
- or ● Abandoned Oil Well
- or ○ Input Well



Scale \_\_\_\_\_

Remarks: \_\_\_\_\_

Submitted by \_\_\_\_\_ Civil Engineer Approved by \_\_\_\_\_ Division Manager

Approved by \_\_\_\_\_ Vice-President-General Manager

