



Western Michigan University  
ScholarWorks at WMU

---

Legacy Scout Tickets from Pure Oil Company

---

8-20-2021

**MGRRE\_PureOilScoutTickets\_Gallini et al\_1\_21035120510000**

MGRRE

*Western Michigan University*

Follow this and additional works at: <https://scholarworks.wmich.edu/pure>



Part of the Geology Commons

---

#### **WMU ScholarWorks Citation**

MGRRE, "MGRRE\_PureOilScoutTickets\_Gallini et al\_1\_21035120510000" (2021). *Legacy Scout Tickets from Pure Oil Company*. 1521.

<https://scholarworks.wmich.edu/pure/1521>

This Document is brought to you for free and open access via ScholarWorks at WMU. It has been accepted for inclusion in Legacy Scout Tickets from Pure Oil Company by an authorized administrator of ScholarWorks at WMU. See the National Digital Catalogue - Science Base Catalogue for more collections submitted by MGRRE.



---

**MGRRE\_PureOilScoutTickets\_Gallini et al\_1\_21035120510000**

API 21035120510000

Permit Number 12051

Lease Name Gallini et al

Well Number 1

County Clare

Township 17N

Range 04W

Section 30

2021 DEQ or Pure co\_name Michigan Consolidated Gas Company

Pure Number 630

Latitude 43.83593

Longitude -84.84915

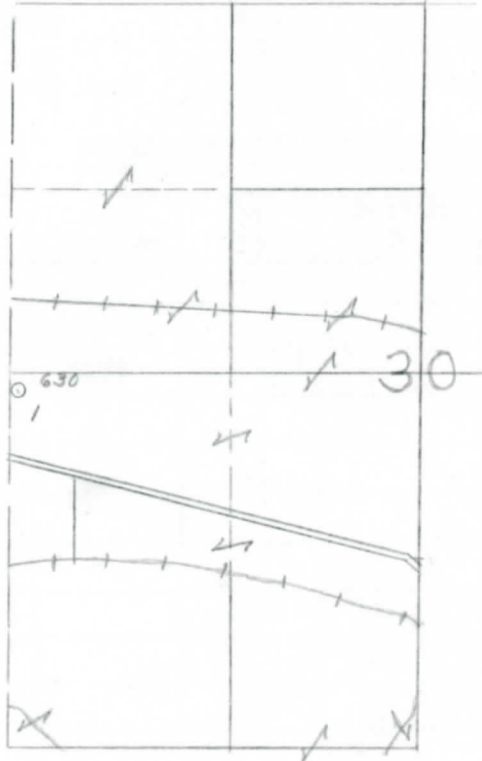
# THE PURE OIL COMPANY LOCATION REPORT

Date December 26, 1945 A.F.E. No. \_\_\_\_\_  
 Division Mich. Producing District \_\_\_\_\_ Lease Gallini et al  
 Acres \_\_\_\_\_ Lease No. \_\_\_\_\_ Elevation \_\_\_\_\_ Well No. 1 (Serial No. 630)  
 Quadrangle W<sup>1</sup>/<sub>2</sub> - W<sup>1</sup>/<sub>2</sub> - W<sup>1</sup>/<sub>2</sub> Sec. 30 Twp. 17 N Rge. 4 W ~~X Bldg.~~ ~~X Dist.~~ Grant  
 Survey \_\_\_\_\_ County Clare State Michigan  
 Operator Mich. Cons. Gas Co. Map Grant Township, Clare County

<u>1320</u>	<u>1320</u>	Feet from North Line of Lease
<u>1270</u>	<u>1270</u>	" " East " " "
		" " South " " "
		" " West " " "
<u>3640</u>	<u>2640</u>	Feet from North Line of Section <u>1/4</u>
		" " East " " "
		" " South " " "
<u>50</u>	<u>50</u>	" " West " " "

**LEGEND**

- Location
- ☀ Gas Well
- Oil Well
- ☀ Gas - Distillate Well
- or ○ Dry Hole
- Dry Showing Oil
- ☀ Dry Showing Gas
- ⊗ Abandoned Location
- ☀ or ☀ Abandoned Gas Well
- or ● Abandoned Oil Well
- or ○ Input Well



Remarks: \_\_\_\_\_  
 \_\_\_\_\_  
 \_\_\_\_\_

Submitted by UB Civil Engineer Approved by \_\_\_\_\_ Division Manager  
 Approved by \_\_\_\_\_ Vice-President - General Manager

