



Western Michigan University  
ScholarWorks at WMU

---

Legacy Scout Tickets from Pure Oil Company

---

8-20-2021

**MGRRE\_PureOilScoutTickets\_Mc Kay & Reeder et  
al\_10\_21035123550000**

MGRRE  
*Western Michigan University*

Follow this and additional works at: <https://scholarworks.wmich.edu/pure>



Part of the Geology Commons

---

#### **WMU ScholarWorks Citation**

MGRRE, "MGRRE\_PureOilScoutTickets\_Mc Kay & Reeder et al\_10\_21035123550000" (2021). *Legacy Scout Tickets from Pure Oil Company*. 1526.  
<https://scholarworks.wmich.edu/pure/1526>

This Document is brought to you for free and open access via ScholarWorks at WMU. It has been accepted for inclusion in Legacy Scout Tickets from Pure Oil Company by an authorized administrator of ScholarWorks at WMU. See the National Digital Catalogue - Science Base Catalogue for more collections submitted by MGRRE.



---

**MGRRE\_PureOilScoutTickets\_Mc Kay & Reeder et al\_10\_21035123550000**

API 21035123550000

Permit Number 12355

Lease Name Mc Kay & Reeder et al

Well Number 10

County Clare

Township 18N

Range 05W

Section 24

2021 DEQ or Pure co\_name Taggart Brothers Gas Company

Pure Number 639

Latitude 43.94097

Longitude -84.85405

# THE PURE OIL COMPANY

## LOCATION REPORT

Date June 5, 1946 A.F.E. No. \_\_\_\_\_

Division Mich. Producing District \_\_\_\_\_ Lease McKay - Reeder, et al

Acres \_\_\_\_\_ Lease No. \_\_\_\_\_ Elevation \_\_\_\_\_ Well No. 10 (Serial No. 639)

Quadrangle App. C NE Sec. 24 Twp. 18 N Rge. 5 W BDCX Lincoln Twp. Lincoln

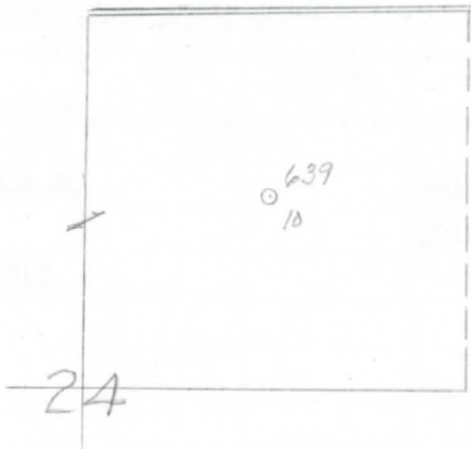
Survey \_\_\_\_\_ County Clare State Michigan

Operator Taggart Bros. Gas Co. Map Lincoln Township, Clare County

<u>1320</u>	<u>1320</u>	Feet from North Line of Lease
<u>1320</u>	<u>1320</u>	" " East " " "
		" " South " " "
		" " West " " "
		Feet from North Line of Section
<u>1320</u>	<u>1320</u>	" " East " " "
<u>1320</u>	<u>1320</u>	" " South " <u>1/4</u> "
		" " West " " "

### LEGEND

- Location
- ☀ Gas Well
- Oil Well
- ☀ Gas - Distillate Well
- ∅ or ○ Dry Hole
- Dry Showing Oil
- ☀ or ☀ Dry Showing Gas
- ⊗ Abandoned Location
- ☀ or ☀ Abandoned Gas Well
- or ● Abandoned Oil Well
- or ○ Input Well



Scale \_\_\_\_\_

Remarks: \_\_\_\_\_

Submitted by CB Civil Engineer

Approved by \_\_\_\_\_ Division Manager

Approved by \_\_\_\_\_ Vice-President - General Manager

