



Western Michigan University
ScholarWorks at WMU

Legacy Scout Tickets from Pure Oil Company

8-20-2021

MGRRE_PureOilScoutTickets_Fracklton, Ann Arbor R R & Grant_28_21035125280000

MGRRE

Western Michigan University

Follow this and additional works at: <https://scholarworks.wmich.edu/pure>



Part of the Geology Commons

WMU ScholarWorks Citation

MGRRE, "MGRRE_PureOilScoutTickets_Fracklton, Ann Arbor R R & Grant_28_21035125280000" (2021).

Legacy Scout Tickets from Pure Oil Company. 1536.

<https://scholarworks.wmich.edu/pure/1536>

This Document is brought to you for free and open access via ScholarWorks at WMU. It has been accepted for inclusion in Legacy Scout Tickets from Pure Oil Company by an authorized administrator of ScholarWorks at WMU. See the National Digital Catalogue - Science Base Catalogue for more collections submitted by MGRRE.



**MGRRE_PureOilScoutTickets_Fracklton, Ann Arbor R R &
Grant_28_21035125280000**

API 21035125280000

Permit Number 12528

Lease Name Fracklton, Ann Arbor R R & Grant

Well Number 28

County Clare

Township 18N

Range 05W

Section 17

2021 DEQ or Pure co_name Mid Michigan Gas Storage Company

Pure Number 650

Latitude 43.94415

Longitude -84.9289936

THE PURE OIL COMPANY

LOCATION REPORT

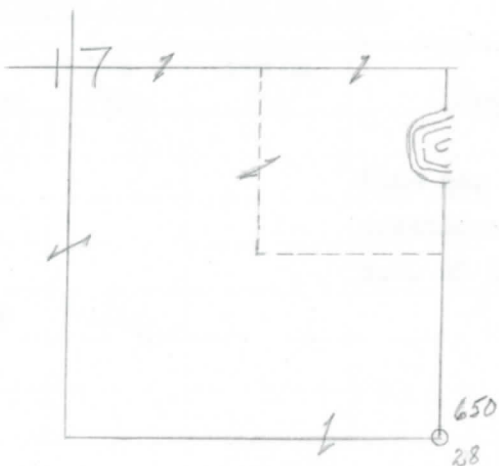
Date August 14, 1946 A.F.E. No. Frackleton-Ann Arbor RR - Grant
 Division Mich. Producing District _____ Lease Frackleton-Ann Arbor RR - Grant
 Acres _____ Lease No. _____ Elevation _____ Well No. 28 (Serial No. 650)
 Quadrangle SE corner SE Corner Sec. 17 Twp. 18 N Rge. 5 W Twp. Lincoln
 Survey _____ County Clare State Michigan
 Operator Mich. Consolidated Gas Co. Map Lincoln Township, Clare County

Feet from North Line of Lease	
<u>660</u>	<u>660</u>
" "	East " " "
<u>660</u>	<u>660</u>
" "	South " " "
" "	West " " "
Feet from North Line of Section	
<u>0</u>	<u>0</u>
" "	East " <u>1/4</u> "
<u>0</u>	<u>0</u>
" "	South " " "
" "	West " " "

LEGEND

- Location
- ☀ Gas Well
- Oil Well
- ☀ Gas - Distillate Well
- or ○ Dry Hole
- Dry Showing Oil
- ☀ Dry Showing Gas
- ⊗ Abandoned Location
- ☀ or ☀ Abandoned Gas Well
- or ● Abandoned Oil Well
- or ○ Input Well

low



Remarks: _____ Scale: _____

Submitted by CB Civil Engineer Approved by _____ Division Manager
 Approved by _____ Vice-President - General Manager

COMPLETION RECORD OF WELLS DRILLED BY OTHER OPERATORS

Michigan Producing Division

Date Sept. 25, 1946 No. 650
 State Michigan Co. Clare ~~Washtenaw~~ Twp. Lincoln Sec. 17 Twp. 18 N Rge. 5 W
 Well No. 28 Serial No. 650 Farm Frackelton-Ann Arbor-Grant Acres
H.R.
 Operator Mich. Consolidated Gas Company
 Date started 9-4-46 Date completed 9-16-46 Elevation 1153.2

PRODUCTION RECORD

1st 24 hours natural
 Date of shot No. of quarts From To From To
 Date of acid No. of gallons shot
 1st 24 hours after acid
 Completed as: Oil Well Gas Well Dry Hole **X**

FORMATION AND CASING RECORD

Formation	Top	Bottom	Top Pay	Bottom Pay	Remarks	Casing	
						Size	Set at
Brown Dolomite	1431	(-278)				8-5/8"	502
Mich. Stray	1563	(-410)			Show gas and questionable show S.W. at 1579.	5-3/16"	1547
Total Depth		1579	(-426)		(-426)		

Remarks

Signed D. C. Shackelford