



Western Michigan University
ScholarWorks at WMU

Legacy Scout Tickets from Pure Oil Company

8-20-2021

MGRRE_PureOilScoutTickets_Ann Arbor Railroad_34_21035125550000

MGRRE

Western Michigan University

Follow this and additional works at: <https://scholarworks.wmich.edu/pure>



Part of the Geology Commons

WMU ScholarWorks Citation

MGRRE, "MGRRE_PureOilScoutTickets_Ann Arbor Railroad_34_21035125550000" (2021). *Legacy Scout Tickets from Pure Oil Company*. 1542.

<https://scholarworks.wmich.edu/pure/1542>

This Document is brought to you for free and open access via ScholarWorks at WMU. It has been accepted for inclusion in Legacy Scout Tickets from Pure Oil Company by an authorized administrator of ScholarWorks at WMU. See the National Digital Catalogue - Science Base Catalogue for more collections submitted by MGRRE.



MGRRE_PureOilScoutTickets_Ann Arbor Railroad_34_21035125550000

API 21035125550000

Permit Number 12555

Lease Name Ann Arbor Railroad

Well Number 34

County Clare

Township 18N

Range 05W

Section 21

2021 DEQ or Pure co_name Mid Michigan Gas Storage Company

Pure Number 656

Latitude 43.9370114

Longitude -84.9239897

THE PURE OIL COMPANY

LOCATION REPORT

Date August 28, 1946 A.F.E. No. Ann Arbor RR

Division Mich. Producing District _____ Lease Ann Arbor R. R.

Acres _____ Lease No. _____ Elevation _____ Well No. 34 (Serial No. 656)

Quadrangle C W¹ Sec. 21 Twp. 18 N Rge. 5 W Twp. Lincoln

Survey _____ County Clare State Michigan

Operator Mich. Cons. Gas Co. Map Lincoln Township, Clare County

Feet from North Line of Lease

_____ " " East " " "

660 660 " " South " " "

660 660 " " West " " "

Feet from North Line of Section

_____ " " East " " "

0 0 " " South 1/4 "

1320 1320 " " West " " "

LEGEND

○ Location

☉ Gas Well

● Oil Well

☼ Gas - Distillate Well

○ or ○ Dry Hole

● or ● Dry Showing Oil

☉ Dry Showing Gas

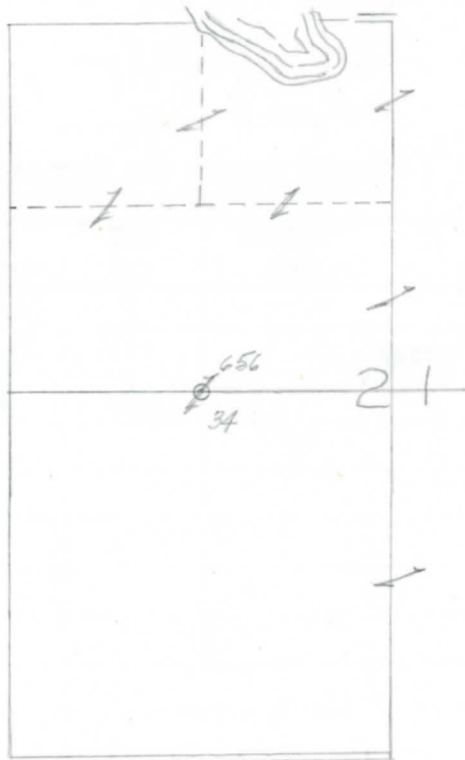
⊗ Abandoned Location

☼ or ☼ Abandoned Gas Well

● or ● Abandoned Oil Well

⊗ or ⊗ Input Well

Low.



Scale _____

Remarks: _____

Submitted by CB Civil Engineer Approved by _____ Division Manager

Approved by _____ Vice-President - General Manager

