



Western Michigan University
ScholarWorks at WMU

Legacy Scout Tickets from Pure Oil Company

8-20-2021

MGRRE_PureOilScoutTickets_Frackelton & Grant_37_21035125800000

MGRRE

Western Michigan University

Follow this and additional works at: <https://scholarworks.wmich.edu/pure>



Part of the Geology Commons

WMU ScholarWorks Citation

MGRRE, "MGRRE_PureOilScoutTickets_Frackelton & Grant_37_21035125800000" (2021). *Legacy Scout Tickets from Pure Oil Company*. 1545.

<https://scholarworks.wmich.edu/pure/1545>

This Document is brought to you for free and open access via ScholarWorks at WMU. It has been accepted for inclusion in Legacy Scout Tickets from Pure Oil Company by an authorized administrator of ScholarWorks at WMU. See the National Digital Catalogue - Science Base Catalogue for more collections submitted by MGRRE.



MGRRE_PureOilScoutTickets_Frackelton & Grant_37_21035125800000

API 21035125800000

Permit Number 12580

Lease Name Frackelton & Grant

Well Number 37

County Clare

Township 18N

Range 05W

Section 17

2021 DEQ or Pure co_name Mid Michigan Gas Storage Company

Pure Number 659

Latitude 43.9480652

Longitude -84.9291813

THE PURE OIL COMPANY
LOCATION REPORT

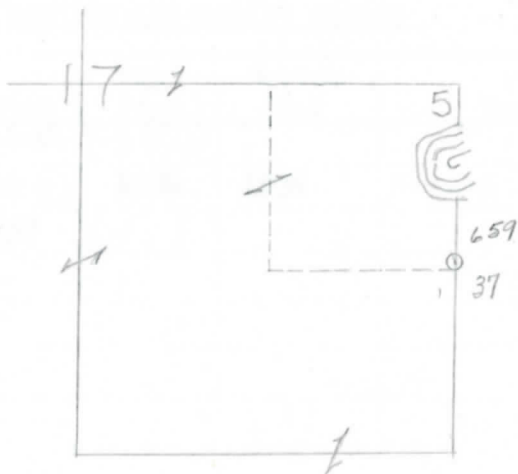
Date September 5, 1946 A.F.E. No. Frackleton-Grant
 Division Mich. Producing District _____ Lease Frackleton-Grant
 Acres _____ Lease No. _____ Elevation _____ Well No. 37 (Serial No. 659)
 Quadrangle C-E line - SE Sec. 17 Twp. 18 N Rge. 5 W Lincoln Lincoln
 Survey _____ County Clare State Michigan
 Operator Mich. Consolidated Gas Co. Map Lincoln Township, Clare County

Feet from North Line of Lease					
<u>660</u>	<u>660</u>	"	"	East	" " "
<u>660</u>	<u>660</u>	"	"	South	" " "
		"	"	West	" " "
Feet from North Line of Section					
<u>0</u>	<u>0</u>	"	"	East	" <u>1/4</u> "
<u>1320</u>	<u>1320</u>	"	"	South	" " "
		"	"	West	" " "

LEGEND

- Location
- ☀ Gas Well
- Oil Well
- ☀ Gas - Distillate Well
- ∅ or ○ Dry Hole
- Dry Showing Oil
- ☀ Dry Showing Gas
- ⊖ Abandoned Location
- ☀ or ☀ Abandoned Gas Well
- or ● Abandoned Oil Well
- or ○ Input Well

*1521 = wood
5' to P. 31
8 5/8
J But + 1398 den
Elev. 1126.3*



Remarks: _____

Submitted by CB Civil Engineer Approved by _____ Division Manager
 Approved by _____ Vice-President - General Manager

THE PURE OIL COMPANY

THE PURE OIL COMPANY

COMPLETION RECORD OF WELLS DRILLED BY OTHER OPERATORS

Michigan Producing

Division

Date September 18, 1946

No. 659

State Michigan Co. Clare

DIST: Lincoln Twp. Lincoln

Sec. 17

Twp. 18 N Rge. 5 W

Well No. 37 Serial No. 659

Farm Grant-Frackelton

Acres

Operator Mich. Consolidated Gas Company

Date started 8-31-46

Date completed 9-10-46

Elevation 1126.3

PRODUCTION RECORD

1st 24 hours natural 3,550,000 Cu. Ft.

Date of shot No. of quarts From To From To

Date of acid No. of gallons shot

1st 24 hours after acid

Completed as: Oil Well Gas Well X Dry Hole

FORMATION AND CASING RECORD

Formation	Top	Bottom	Top Pay	Bottom Pay	Remarks	Casing	
						Size	Set at
Brown Dolomite	1398	S.L.M.	(272)			8-5/8"	503
Mich. Stray	1530	(-404)	1530	1536	(-404)	5-3/16"	1521
Total Depth		1537	(-411)				

Remarks

Signed D. C. Shackelford