



Western Michigan University
ScholarWorks at WMU

Legacy Scout Tickets from Pure Oil Company

8-20-2021

**MGRRE_PureOilScoutTickets_Frackelton, D
W_40_21035125840000**

MGRRE
Western Michigan University

Follow this and additional works at: <https://scholarworks.wmich.edu/pure>



Part of the Geology Commons

WMU ScholarWorks Citation

MGRRE, "MGRRE_PureOilScoutTickets_Frackelton, D W_40_21035125840000" (2021). *Legacy Scout Tickets from Pure Oil Company*. 1548.
<https://scholarworks.wmich.edu/pure/1548>

This Document is brought to you for free and open access via ScholarWorks at WMU. It has been accepted for inclusion in Legacy Scout Tickets from Pure Oil Company by an authorized administrator of ScholarWorks at WMU. See the National Digital Catalogue - Science Base Catalogue for more collections submitted by MGRRE.



MGRRE_PureOilScoutTickets_Frackelton, D W_40_21035125840000

API 21035125840000

Permit Number 12584

Lease Name Frackelton, D W

Well Number 40

County Clare

Township 18N

Range 05W

Section 20

2021 DEQ or Pure co_name Mid Michigan Gas Storage Company

Pure Number 662

Latitude 43.9368943

Longitude -84.9387528

THE PURE OIL COMPANY

LOCATION REPORT

Date September 5, 1946

A.F.E. No. _____

D. W. Frackleton
D. W. Frackleton

Division Mich. Producing District _____

Lease _____

Acres _____ Lease No. _____ Elevation _____ Well No. 40 (Serial No. 662)

Quadrangle Approx. C Sec. 20 Twp. 18 N Rge. 5 W ~~Dist. Risk~~ Twp. Lincoln

Survey _____ County Clare State Michigan

Operator Mich. Consolidated Gas Co. Map Lincoln Township, Clare County

Feet from North Line of Lease

610 610 " " East " " "

660 660 " " South " " "

" " West " " "

Feet from North Line of Section

" " East " " "

0 0 " " South " 1/4 "

50 50 " " West " " "

LEGEND

○ Location

☀ Gas Well

● Oil Well

☀ Gas - Distillate Well

∅ or ○ Dry Hole

● Dry Showing Oil

☀ Dry Showing Gas

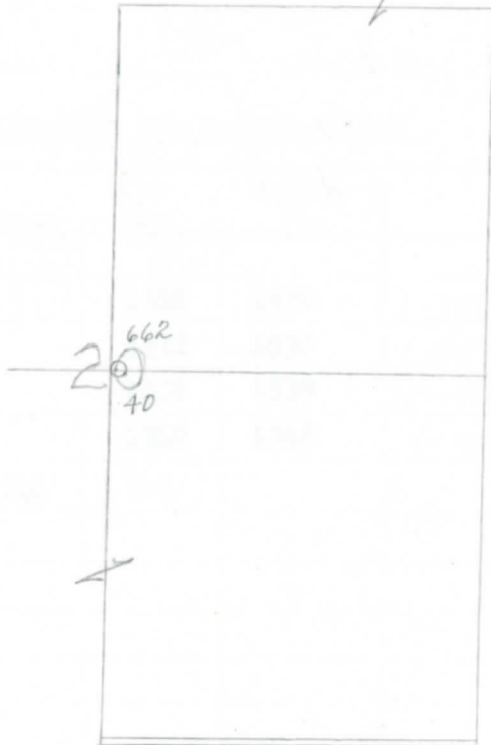
⊗ Abandoned Location

☀ or ⊗ Abandoned Gas Well

● or ● Abandoned Oil Well

● or ○ Input Well

Loc



Scale _____

Remarks: _____

Submitted by CB Civil Engineer

Approved by _____ Division Manager

Approved by _____ Vice-President - General Manager

COMPLETION RECORD OF WELLS DRILLED BY OTHER OPERATORS

Michigan Producing Division

Date Sept. 25, 1946 No. 662
 State Mich. Co. Clare ~~Dixie~~ Twp. Lincoln Sec. 20 Twp. 18 N Rge. 5 W
 Well No. 40 Serial No. 662 Farm D. W. Frackelton Acres _____
 Operator Michigan Consolidated Gas Company
 Date started 9-8-46 Date completed 9-17-46 Elevation 1130.2

PRODUCTION RECORD

1st 24 hours natural 15,250,000 Cu. Ft.
 Date of shot _____ No. of quarts _____ From _____ To _____
 Date of acid _____ No. of gallons _____
 1st 24 hours after acid _____
 Completed as: Oil Well _____ Gas Well X Dry Hole _____

FORMATION AND CASING RECORD

Formation	Top	Bottom	Top Pay	Bottom Pay	Remarks	Casing	
						Size	Set at
Brown Dolomite	1395	(-265)				8-5/8"	475
Mich. Stray	1528	(-398)	1528	1530	(-398)	5-3/16"	1515
			1532	1537	(-402)		
			1538	1539	(-408)		
			1540	1546	(-410)		
Total Depth		1546	(-416)				

Remarks _____

Signed D. C. Shackelford