



Western Michigan University  
ScholarWorks at WMU

---

Legacy Scout Tickets from Pure Oil Company

---

8-20-2021

## MGRRE\_PureOilScoutTickets\_Michigan Gas Storage Co aka Consumers Power Co Fee 211\_211\_21035126420000

MGRRE

*Western Michigan University*

Follow this and additional works at: <https://scholarworks.wmich.edu/pure>



Part of the Geology Commons

---

### WMU ScholarWorks Citation

MGRRE, "MGRRE\_PureOilScoutTickets\_Michigan Gas Storage Co aka Consumers Power Co Fee 211\_211\_21035126420000" (2021). *Legacy Scout Tickets from Pure Oil Company*. 1550.  
<https://scholarworks.wmich.edu/pure/1550>

This Document is brought to you for free and open access via ScholarWorks at WMU. It has been accepted for inclusion in Legacy Scout Tickets from Pure Oil Company by an authorized administrator of ScholarWorks at WMU. See the National Digital Catalogue - Science Base Catalogue for more collections submitted by MGRRE.



---

**MGRRE\_PureOilScoutTickets\_Michigan Gas Storage Co aka Consumers Power  
Co Fee 211\_211\_21035126420000**

API 21035126420000

Permit Number 12642

Lease Name Michigan Gas Storage Co aka Consumers Power Co Fee 211

Well Number 211

County Clare

Township 20N

Range 06W

Section 30

2021 DEQ or Pure co\_name Consumers Energy Company

Pure Number 664

Latitude 44.0899201

Longitude -85.084907

THE PURE OIL COMPANY

LOCATION REPORT

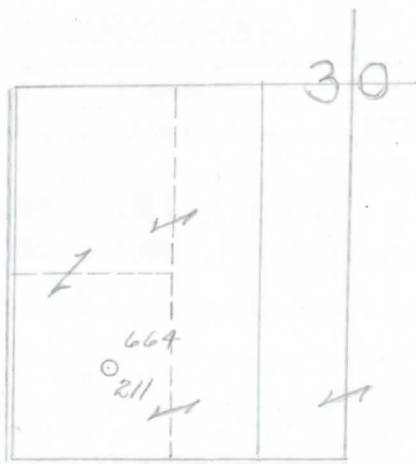
Date Sept. 25, 1946 A.F.E. No. \_\_\_\_\_  
 Division Mich. Producing District \_\_\_\_\_ Lease Consumers Power Company  
 Acres \_\_\_\_\_ Lease No. \_\_\_\_\_ Elevation \_\_\_\_\_ Well No. 211 (Serial No. 664)  
 Quadrangle C SW SW Sec. 30 Twp. 20 N Rge. 6 W Twp. Winterfield  
 Survey \_\_\_\_\_ County Clare State Michigan  
 Operator Consumers Power Co. Map Winterfield Township, Clare County

Feet from North Line of Lease	
<u>660</u>	<u>660</u>
" "	East " " "
<u>660</u>	<u>660</u>
" "	South " " "
Feet from North Line of Section	
<u>660</u>	<u>660</u>
" "	East " " "
<u>660</u>	<u>660</u>
" "	South " " <u>1/4</u>
<u>660</u>	<u>660</u>
" "	West " " "

LEGEND

- Location
- ☀ Gas Well
- Oil Well
- ☀ Gas - Distillate Well
- ∅ or ○ Dry Hole
- Dry Showing Oil
- ☀ Dry Showing Gas
- ⊗ Abandoned Location
- ☀ or ☀ Abandoned Gas Well
- or ● Abandoned Oil Well
- or ○ Input Well

*Low*



Scale \_\_\_\_\_

Remarks: \_\_\_\_\_  
 \_\_\_\_\_  
 \_\_\_\_\_

Submitted by UB Civil Engineer Approved by \_\_\_\_\_ Division Manager  
 Approved by \_\_\_\_\_ Vice-President - General Manager

COMPLETION RECORD OF WELLS DRILLED BY OTHER OPERATORS

Michigan Producing DIVISION

Date November 27, 1946 No. 664  
 State Mich. Co. Clare Twp. Winterfield Sec. 30 Twp. 20 N Rge. 6 W  
 Well No. 211 Serial No. 664 Farm Fee Acres \_\_\_\_\_  
 Operator Consumers Power Company  
 Date started 10-7-46 Date completed 11-23-46 Elevation 1119.7

PRODUCTION RECORD

1st 24 hours natural 5,430,000 Cu. Ft.  
 Date of shot \_\_\_\_\_ No. of quarts \_\_\_\_\_ From \_\_\_\_\_ To \_\_\_\_\_  
 Date of acid \_\_\_\_\_ No. of gallons shot \_\_\_\_\_  
 1st 24 hours after acid \_\_\_\_\_  
 Completed as: Oil Well \_\_\_\_\_ Gas Well  Dry Hole \_\_\_\_\_

FORMATION AND CASING RECORD

Formation	Top	Bottom	Top Pay	Bottom Pay	Remarks	Casing	
						Size	Set at
Brown Dolomite	1170	(-50)				13-3/8"	239
Mich. Stray	1304	(-184)	1308	1311	(-188)	8-5/8"	1304
			1328	1337	(-208)		
Total Depth		1338	(-218)				

Remarks Breakdown: At 1308 gauged 60,000 cu. ft.; 1309 - 145,000 cu. ft.; 1310 - 240,000 cu. ft.; 1311-1318 - 280,000 cu. ft.; 1326 Shale; 1328 - 340,000 cu. ft.; 1329 - 396,000 cu. ft. 1330 - 1,570,000 cu. ft.; 1331 - 1,630,000 cu. ft.; 1332 - 2,980,000 cu. ft.; 1333 - 3,440,000 cu. ft.; 1334 4,250,000 cu. ft.; 1335 - 4,960,000 cu. ft.; 1337 - 5,430,000 cu. ft.; 1338 same. 1336 gauged 5,200,000.

Signed Harry J. Gaspeny