



Western Michigan University  
ScholarWorks at WMU

---

Legacy Scout Tickets from Pure Oil Company

---

8-20-2021

## MGRRE\_PureOilScoutTickets\_Carnes, Pearl & Clare et al\_1\_21035126970000

MGRRE

*Western Michigan University*

Follow this and additional works at: <https://scholarworks.wmich.edu/pure>



Part of the Geology Commons

---

### WMU ScholarWorks Citation

MGRRE, "MGRRE\_PureOilScoutTickets\_Carnes, Pearl & Clare et al\_1\_21035126970000" (2021). *Legacy Scout Tickets from Pure Oil Company*. 1551.  
<https://scholarworks.wmich.edu/pure/1551>

This Document is brought to you for free and open access via ScholarWorks at WMU. It has been accepted for inclusion in Legacy Scout Tickets from Pure Oil Company by an authorized administrator of ScholarWorks at WMU. See the National Digital Catalogue - Science Base Catalogue for more collections submitted by MGRRE.



---

**MGRRE\_PureOilScoutTickets\_Carnes, Pearl & Clare et al\_1\_21035126970000**

API 21035126970000

Permit Number 12697

Lease Name Carnes, Pearl & Clare et al

Well Number 1

County Clare

Township 18N

Range 05W

Section 9

2021 DEQ or Pure co\_name Thompson, E. G.

Pure Number 665

Latitude 43.96936

Longitude -84.91329

T  
A  
S

October 23, 1946

THE PURE OIL COMPANY  
LOCATION REPORT

Date October 23, 1946

A.F.E. No. \_\_\_\_\_

Division Mich. Producing District \_\_\_\_\_ Lease Pearl & Clare Carnes et al

Acres \_\_\_\_\_ Lease No. \_\_\_\_\_ Elevation \_\_\_\_\_ Well No. 1 (Serial No. 665)

Quadrangle C-NE Sec. 9 Twp. 18N Rge. 5W Blk. Dist. Lincoln Twp. Lincoln

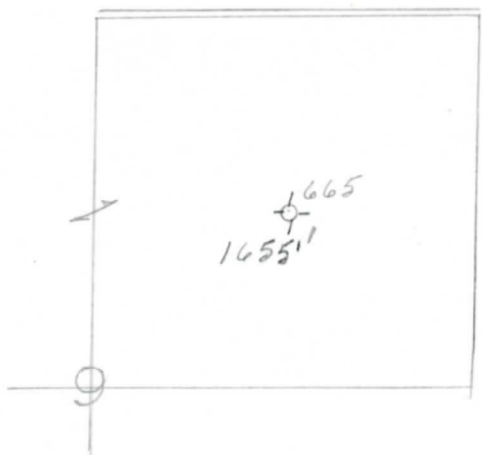
Survey \_\_\_\_\_ County Clare State Michigan

Operator E. G. Thompson Map Lincoln Township, Clare County

<u>1320</u>	<u>1320</u>	Feet from North Line of Lease
<u>1320</u>	<u>1320</u>	" " East " " "
		" " South " " "
		" " West " " "
<u>1320</u>	<u>1320</u>	Feet from North Line of Section <u>1/4</u>
<u>1320</u>	<u>1320</u>	" " East " " "
		" " South " " "
		" " West " " "

LEGEND

- Gas Well
- Oil Well
- Gas - Distillate Well
- Dry Hole
- Dry Showing Oil
- Dry Showing Gas
- Abandoned Location
- Abandoned Gas Well
- Abandoned Oil Well
- Input Well
- Location



Scale \_\_\_\_\_

Remarks: \_\_\_\_\_  
 \_\_\_\_\_  
 \_\_\_\_\_

Submitted by CB Civil Engineer Approved by \_\_\_\_\_ Division Manager

Approved by \_\_\_\_\_ Vice-President - General Manager