



Western Michigan University
ScholarWorks at WMU

Legacy Scout Tickets from Pure Oil Company

8-20-2021

MGRRE_PureOilScoutTickets_Michigan Gas Storage Co aka Consumers Power Co _219_21035127170000

MGRRE

Western Michigan University

Follow this and additional works at: <https://scholarworks.wmich.edu/pure>



Part of the Geology Commons

WMU ScholarWorks Citation

MGRRE, "MGRRE_PureOilScoutTickets_Michigan Gas Storage Co aka Consumers Power Co _219_21035127170000" (2021). *Legacy Scout Tickets from Pure Oil Company*. 1553.
<https://scholarworks.wmich.edu/pure/1553>

This Document is brought to you for free and open access via ScholarWorks at WMU. It has been accepted for inclusion in Legacy Scout Tickets from Pure Oil Company by an authorized administrator of ScholarWorks at WMU. See the National Digital Catalogue - Science Base Catalogue for more collections submitted by MGRRE.



**MGRRE_PureOilScoutTickets_Michigan Gas Storage Co aka Consumers Power
Co _219_21035127170000**

API 21035127170000

Permit Number 12717

Lease Name Michigan Gas Storage Co aka Consumers Power Co

Well Number 219

County Clare

Township 20N

Range 06W

Section 19

2021 DEQ or Pure co_name Consumers Energy Company

Pure Number 668

Latitude 44.111574

Longitude -85.0706049

10-30-46

THE PURE OIL COMPANY

Date October 30, 1946 LOCATION REPORT A.F.E. No. _____

Division Mich. Producing District _____ Lease Consumers Power Co.
Mich. Producing Consumers Power Company

Acres _____ Lease No. _____ Elevation _____ Well No. 219 (Serial No. 668)

Quadrangle C SE NE Sec. 19 Twp. 20N Rge. 6W Blk. Dist. Winterfield
C SE NE 19 20N 6W Winterfield

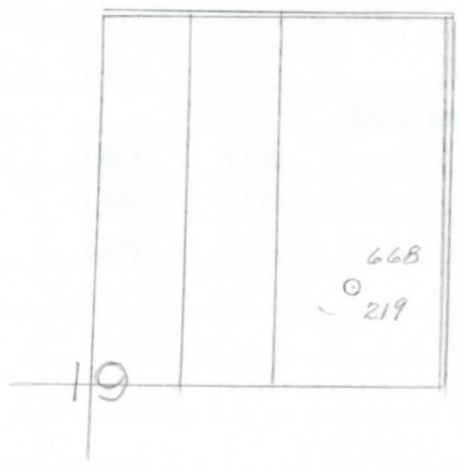
Survey _____ County Clare State Michigan

Operator Consumers Power Co. Map Winterfield Township, Clare County
Consumers Power Company Winterfield Township, Clare County

Feet from North Line of Lease	
<u>660</u>	<u>660</u>
" "	East " " "
<u>660</u>	<u>660</u>
" "	South " " "
" "	West " " "
Feet from North Line of Section <u>1/4</u>	
<u>660</u>	<u>660</u>
" "	East " " "
<u>660</u>	<u>660</u>
" "	South " " "
" "	West " " "

LEGEND

- Location
- ☉ Gas Well
- Oil Well
- ☼ Gas - Distillate Well
- or ○ Dry Hole
- or ● Dry Showing Oil
- ☉ or ☉ Dry Showing Gas
- ⊗ Abandoned Location
- ☼ or ☼ Abandoned Gas Well
- or ● Abandoned Oil Well
- or ○ Input Well



Scale _____

Remarks: _____

Submitted by CB _____ Approved by _____
 Civil Engineer Division Manager
 _____ Approved by _____
 Vice-President - General Manager

Date October 30, 1946

LOCATION BEBOBI
THE PURE OIL COMPANY

W.E. NO.

COMPLETION RECORD OF WELLS DRILLED BY OTHER OPERATORS

Michigan Producing DIVISION

Date December 11, 1946 No. 668
 State Mich. Co. Clare ~~District~~ Twp. Winterfield Sec. 19 Twp. 20 N Rge. 6 W
 Well No 219 Serial No 668 Farm Fee Acres _____
 Operator Consumers Power Company
 Date started 10-26-46 Date completed 12-8-46 Elevation 1130.4

PRODUCTION RECORD

1st 24 hours natural 19,400,000 Cu. Ft.
 Date of shot _____ No. of quarts _____ From _____ To _____ From _____ To _____
 Date of acid _____ No. of gallons shot _____
 1st 24 hours after acid _____
 Completed as: Oil Well _____ Gas Well Dry Hole _____

FORMATION AND CASING RECORD

Formation	Top	Bottom	Top Pay	Bottom Pay	Remarks	Casing	
						Size	Set at
Brown Dolomite	1198	(-68)			Show gas 1336.	13-3/8"	243
Mich. Stray	1336	(-206)	1365	1366	(-235) (-206)	8-5/8"	1333
			1368	1370	(-238)		
			1375	1384	(-245)		
Total Depth		1384	(-254)				

Remarks _____

Signed Harry J. Gaspeny