



Western Michigan University
ScholarWorks at WMU

Legacy Scout Tickets from Pure Oil Company

8-20-2021

MGRRE_PureOilScoutTickets_Michigan Gas Storage Co aka Consumers Power Co _220_21035127180000

MGRRE

Western Michigan University

Follow this and additional works at: <https://scholarworks.wmich.edu/pure>



Part of the Geology Commons

WMU ScholarWorks Citation

MGRRE, "MGRRE_PureOilScoutTickets_Michigan Gas Storage Co aka Consumers Power Co _220_21035127180000" (2021). *Legacy Scout Tickets from Pure Oil Company*. 1554.
<https://scholarworks.wmich.edu/pure/1554>

This Document is brought to you for free and open access via ScholarWorks at WMU. It has been accepted for inclusion in Legacy Scout Tickets from Pure Oil Company by an authorized administrator of ScholarWorks at WMU. See the National Digital Catalogue - Science Base Catalogue for more collections submitted by MGRRE.



**MGRRE_PureOilScoutTickets_Michigan Gas Storage Co aka Consumers Power
Co _220_21035127180000**

API 21035127180000

Permit Number 12718

Lease Name Michigan Gas Storage Co aka Consumers Power Co

Well Number 220

County Clare

Township 20N

Range 06W

Section 32

2021 DEQ or Pure co_name Consumers Energy Company

Pure Number 669

Latitude 44.0792665

Longitude -85.0557591

T
P
A

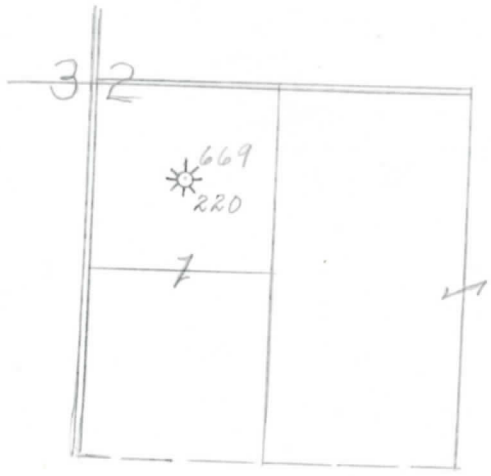
THE PURE OIL COMPANY LOCATION REPORT

Date 10-30-46 October 30, 1946 A.F.E. No. _____
 Division Mich. Producing District _____ Lease Consumers Power Co.
Mich. Producing District _____ Lease Consumers Power Company
 Acres _____ Lease No. _____ Elevation _____ Well No. 220 (Serial No. 669)
 Quadrangle C NW SE Sec. 32 Twp. 20N Rge. 6W Blk. Winterfield
C NW SE Sec. 32 Twp. 20N Rge. 6W Dist. Winterfield
 Survey _____ County Clare State Michigan
 Operator Consumers Power Co. Map Winterfield Township, Clare County
Consumers Power Company Map Winterfield Township, Clare County

660 660 Feet from North Line of Lease
 " " East " " "
 " " South " " "
660 660 " " West " " "
660 660 Feet from North Line of Section
 " " East " " "
 " " South " " "
660 660 " " West " " "

LEGEND

- Location
- ☀ Gas Well
- Oil Well
- ☀ Gas - Distillate Well
- or ○ Dry Hole
- Dry Showing Oil
- ☀ Dry Showing Gas
- ⊗ Abandoned Location
- ☀ or ☀ Abandoned Gas Well
- or ● Abandoned Oil Well
- or ○ Input Well



Scale _____

Remarks: _____

Submitted by CB Civil Engineer Approved by _____ Division Manager
 Approved by _____ Vice-President - General Manager