



Western Michigan University  
ScholarWorks at WMU

---

Legacy Scout Tickets from Pure Oil Company

---

8-20-2021

## MGRRE\_PureOilScoutTickets\_Michigan Gas Storage Co aka Consumers Power Co \_222\_21035127200000

MGRRE

*Western Michigan University*

Follow this and additional works at: <https://scholarworks.wmich.edu/pure>



Part of the Geology Commons

---

### WMU ScholarWorks Citation

MGRRE, "MGRRE\_PureOilScoutTickets\_Michigan Gas Storage Co aka Consumers Power Co \_222\_21035127200000" (2021). *Legacy Scout Tickets from Pure Oil Company*. 1556.  
<https://scholarworks.wmich.edu/pure/1556>

This Document is brought to you for free and open access via ScholarWorks at WMU. It has been accepted for inclusion in Legacy Scout Tickets from Pure Oil Company by an authorized administrator of ScholarWorks at WMU. See the National Digital Catalogue - Science Base Catalogue for more collections submitted by MGRRE.



---

**MGRRE\_PureOilScoutTickets\_Michigan Gas Storage Co aka Consumers Power  
Co \_222\_21035127200000**

API 21035127200000

Permit Number 12720

Lease Name Michigan Gas Storage Co aka Consumers Power Co

Well Number 222

County Clare

Township 20N

Range 06W

Section 32

2021 DEQ or Pure co\_name Consumers Energy Company

Pure Number 671

Latitude 44.0757717

Longitude -85.0513805

T  
P  
A

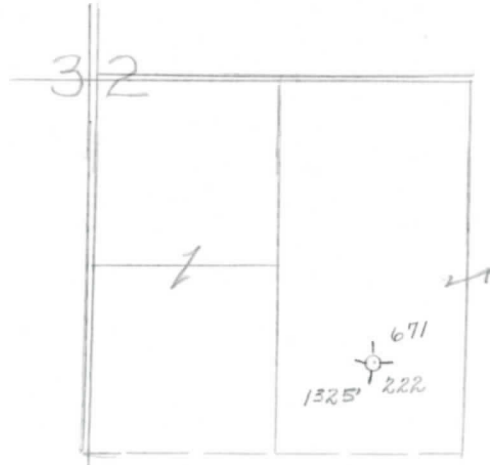
# THE PURE OIL COMPANY LOCATION REPORT

Date 10-30-46 October 30, 1946 A.F.E. No. \_\_\_\_\_  
 Division Mich. Producing District \_\_\_\_\_ Lease Consumers Power Co.  
Mich. Producing District \_\_\_\_\_ Lease Consumers Power Company  
 Acres \_\_\_\_\_ Lease No. \_\_\_\_\_ Elevation \_\_\_\_\_ Well No. 222 (Serial No. 671)  
 Quadrangle C SE SE Sec. 32 Twp. 20N Rge. 6W Blk. Dist. Winterfield  
C SE SE Sec. 32 Twp. 20N Rge. 6W Twp. Winterfield  
 Survey \_\_\_\_\_ County Clare State Michigan  
 Operator Consumers Power Co. Map Winterfield Township, Clare County  
Consumers Power Company Map Winterfield Township, Clare County

Feet from North Line of Lease	
<u>660</u>	<u>660</u>
" "	East " " "
<u>660</u>	<u>660</u>
" "	South " " "
" "	West " " "
Feet from North Line of Section <u>244</u>	
<u>660</u>	<u>660</u>
" "	East " " "
<u>660</u>	<u>660</u>
" "	South " " "
" "	West " " "

**LEGEND**

- Location
- ☀ Gas Well
- Oil Well
- ☀ Gas - Distillate Well
- or ○ Dry Hole
- Dry Showing Oil
- ☀ or ☀ Dry Showing Gas
- or ○ Abandoned Location
- ☀ or ☀ Abandoned Gas Well
- or ● Abandoned Oil Well
- or ○ Input Well



Scale \_\_\_\_\_

Remarks: \_\_\_\_\_  
 \_\_\_\_\_  
 \_\_\_\_\_

Submitted by CB Civil Engineer Approved by \_\_\_\_\_ Division Manager  
 Approved by \_\_\_\_\_ Vice-President - General Manager