



Western Michigan University
ScholarWorks at WMU

Legacy Scout Tickets from Pure Oil Company

8-20-2021

MGRRE_PureOilScoutTickets_Michigan Gas Storage Co aka Consumers Power Co _223_21035127210000

MGRRE

Western Michigan University

Follow this and additional works at: <https://scholarworks.wmich.edu/pure>



Part of the Geology Commons

WMU ScholarWorks Citation

MGRRE, "MGRRE_PureOilScoutTickets_Michigan Gas Storage Co aka Consumers Power Co _223_21035127210000" (2021). *Legacy Scout Tickets from Pure Oil Company*. 1557.
<https://scholarworks.wmich.edu/pure/1557>

This Document is brought to you for free and open access via ScholarWorks at WMU. It has been accepted for inclusion in Legacy Scout Tickets from Pure Oil Company by an authorized administrator of ScholarWorks at WMU. See the National Digital Catalogue - Science Base Catalogue for more collections submitted by MGRRE.



**MGRRE_PureOilScoutTickets_Michigan Gas Storage Co aka Consumers Power
Co _223_21035127210000**

API 21035127210000

Permit Number 12721

Lease Name Michigan Gas Storage Co aka Consumers Power Co

Well Number 223

County Clare

Township 20N

Range 06W

Section 34

2021 DEQ or Pure co_name Consumers Energy Company

Pure Number 672

Latitude 44.0833084

Longitude -85.0259326

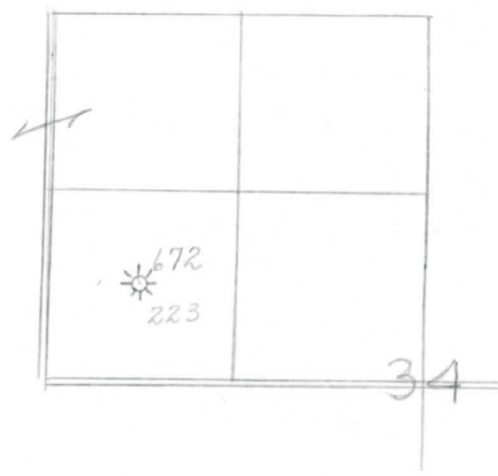
T
P
A

THE PURE OIL COMPANY
LOCATION REPORT

Date 10-30-46 October 30, 1946
 Division Mich. Producing District _____ Lease Consumers Power Co.
Mich. Producing District _____ Lease Consumers Power Company
 Acres _____ Lease No. _____ Elevation _____ Well No. 223 (Serial No. 672)
 Quadrangle C SW NW Sec. 34 Twp. 20N Rge. 6W Blk. Winterfield
C SW NW Sec. 34 Twp. 20N Rge. 6W Dist. Winterfield
 Survey _____ County Clare State Michigan
 Operator Consumers Power Co. Map Winterfield Township, Clare County
Consumers Power Company Map Winterfield Township, Clare County

| | | |
|------------|------------|---------------------------------|
| _____ | _____ | Feet from North Line of Lease |
| _____ | _____ | " " East " " " |
| <u>660</u> | <u>660</u> | " " South " " " |
| <u>660</u> | <u>660</u> | " " West " " " |
| _____ | _____ | Feet from North Line of Section |
| _____ | _____ | " " East " " " |
| <u>660</u> | <u>660</u> | " " South " " " |
| <u>660</u> | <u>660</u> | " " West " " " |

- LEGEND
- Location
 - ☀ Gas Well
 - Oil Well
 - ☀ Gas - Distillate Well
 - ∅ or ○ Dry Hole
 - Dry Showing Oil
 - ☀ Dry Showing Gas
 - ⊗ Abandoned Location
 - ☀ or ⊗ Abandoned Gas Well
 - or ● Abandoned Oil Well
 - or ○ Input Well



Remarks: _____

Scale _____

Submitted by CB _____ Approved by _____
 Civil Engineer _____ Division Manager _____
 Approved by _____
 Vice-President - General Manager _____