



Western Michigan University
ScholarWorks at WMU

Legacy Scout Tickets from Pure Oil Company

8-20-2021

MGRRE_PureOilScoutTickets_Michigan Gas Storage Co aka Consumers Power Co _235_21035127630000

MGRRE

Western Michigan University

Follow this and additional works at: <https://scholarworks.wmich.edu/pure>



Part of the Geology Commons

WMU ScholarWorks Citation

MGRRE, "MGRRE_PureOilScoutTickets_Michigan Gas Storage Co aka Consumers Power Co _235_21035127630000" (2021). *Legacy Scout Tickets from Pure Oil Company*. 1569.
<https://scholarworks.wmich.edu/pure/1569>

This Document is brought to you for free and open access via ScholarWorks at WMU. It has been accepted for inclusion in Legacy Scout Tickets from Pure Oil Company by an authorized administrator of ScholarWorks at WMU. See the National Digital Catalogue - Science Base Catalogue for more collections submitted by MGRRE.



**MGRRE_PureOilScoutTickets_Michigan Gas Storage Co aka Consumers Power
Co _235_21035127630000**

API 21035127630000

Permit Number 12763

Lease Name Michigan Gas Storage Co aka Consumers Power Co

Well Number 235

County Clare

Township 20N

Range 06W

Section 31

2021 DEQ or Pure co_name Consumers Energy Company

Pure Number 684

Latitude 44.0755539

Longitude -85.0755102

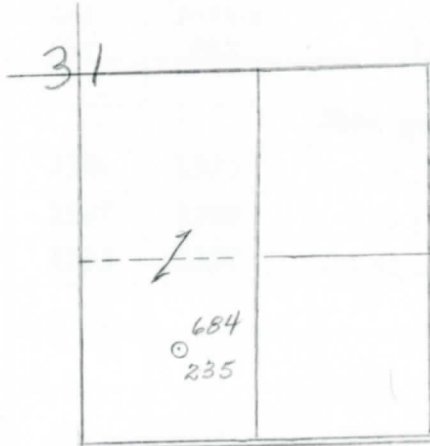
THE PURE OIL COMPANY

Date November 19, 1946 **LOCATION REPORT** A.F.E. No. Consumers Power Co.
 Division Mich. Producing District _____ Lease Consumers Power Company
 Acres _____ Lease No. _____ Elevation _____ Well No. 235 (Serial No. 684)
 Quadrangle C SW SE Sec. 31 Twp. 20 N Rge. 6 W **WINTERFIELD** Twp. Winterfield
 Survey _____ County Clare State Michigan
 Operator Consumers Power Co. Map Winterfield Township, Clare County

Feet from North Line of Lease	
_____	_____
<u>660</u>	<u>660</u>
<u>660</u>	<u>660</u>
Feet from North Line of Section	
_____	_____
<u>660</u>	<u>660</u>
<u>660</u>	<u>660</u>

LEGEND

- Location
- ☀ Gas Well
- Oil Well
- ☀ Gas-Distillate Well
- ∅ or ○ Dry Hole
- Dry Showing Oil
- ☀ Dry Showing Gas
- ⊗ Abandoned Location
- ☀ or ☀ Abandoned Gas Well
- or ● Abandoned Oil Well
- or ○ Input Well



Scale _____

Remarks: _____

Submitted by CB Civil Engineer Approved by _____ Division Manager
 Approved by _____ Vice-President - General Manager

COMPLETION RECORD OF WELLS DRILLED BY OTHER OPERATORS

Michigan Producing DIVISION

Date December 31, 1946 No. 684
 State Mich. Co. Clare DIST. Winterfield Sec. 31 Twp. 20 N Rge. 6 W
 Well No. 235 Serial No. 684 Farm Fee Acres _____
 Operator Consumers Power Company
 Date started 11-15-46 Date completed 12-21-46 Elevation 1101.0

PRODUCTION RECORD

1st 24 hours natural 3,600,000 Cu. Ft.
 Date of shot _____ No. of quarts _____ From _____ To _____
 Date of acid _____ No. of gallons _____
 1st 24 hours after acid _____
 Completed as: Oil Well _____ Gas Well Dry Hole _____

FORMATION AND CASING RECORD

Formation	Top	Bottom	Top Pay	Bottom Pay	Remarks	Casing	
						Size	Set at
Brown Dolomite	1158	(-57)				13-3/8"	240
Mich. Stray	1318	(-217)			Show gas 1318.	8-5/8"	1313
			1324	1325	(-223)	(-217)	
			1327	1329	(-226)		
			1333	1337	(-232)		
Total Depth		1337	(-236)				

Remarks _____

Signed Harry J. Gaspeny